

UBSS LOG BOOK 5

---

SEPTEMBER 24th 1949

TO

SEPTEMBER 9th 1951

UNIVERSITY OF BRISTOL SPELEOLOGICAL SOCIETY

BURRINGTON FIELD HEADQUARTERS

CAMP RULES.

1. Parties visiting caves shall leave a note, stating persons, destination time of departure and date, in an obvious position in the hut.
2. The log book must be written up after each camp and all work done must be recorded. The recorder must sign his name to his report.
3. After each camp the fire must be properly extinguished, the grate cleaned, the wood bunkers filled and the hut swept.
4. Food must be stored in proper receptacles only.
5. Waste materials must be removed from the hut to the appropriate pit.
6. Members responsible for damage to the lighting equipment shall replace same at their own expense.
7. Blankets and mattresses should be folded and neatly piled up before camp is closed.
8. *All members must pay their levy before they depart or are turned out*  
The hut must be kept properly bolted and shuttered and the last personage departing will be held responsible in the event of loss or damage to the neglect of these precautions.
9. The log book must be preserved. Its pages shall not be removed or destroyed.

Ralph D. Stride. 22.2.49.  
Hon. Secretary.

TIMBER.

"The Society is given permission to cut birchwood, and birchwood only, for the purpose of the Society for use directly by the Society in the wood to the north of the Society's hut.

"The trees must be cut close to the ground and the brushwood properly collected in each case, and if not used stacked in a suitable place."

264  
483.5

*The efficient recording of the work done in all members' reports*

... properly bolted and shuttered and the last  
personage de... will be held responsible in the event of loss  
or day... to the neglect of these precautions.

9. If log book must be preserved. Its pages shall not be removed  
or destroyed.

Ralph D. Stride. 22.2.49.  
Hon. Secretary.

TIMBER.

"The Society is given permission to cut birchwood, and birchwood  
only, ~~for the purpose of the Society~~ for use directly by the Society  
in the wood to the north of the Society's hut.

"The trees must be cut close to the ground and the brushwood  
properly collected in each case, and if not used stacked in a suitable  
place. \*

"Ash and other trees must not be cut and proper care must be taken  
to avoid damage to other trees when felling the birch. It is realised  
that in some cases some damage is unavoidable but it is hoped that  
proper care will be taken to keep this to a minimum and to restore such  
damage as far as possible.

"The Society shall confine its activities to the area east of the  
ruined wall which divides the land in a roughly north south direction  
to the west of the hut and to the east of the new plantation.

"The Society shall not interfere with the rights of the tenants  
of the land nor permit the privileges granted to be abused.

Professor E.K. Tratman.  
President. 2.8.48.

ALL BRUSHWOOD TO BE Brought BACK TO  
CAMP AND BURNED.

R.A. Bendall  
Member i/c.

UNDER NO CIRCUMSTANCES  
ARE ASHES TO BE REMOVED  
FROM THE FIREPLACE.

TINS YES!

ASHES NO!

R.A. Bandall

Member 1/c Tools.



Ref. No.....

# University of Bristol.

SPELAEOLOGICAL SOCIETY

Hon. Secretary:

H. WRIGHT.

Tel. No. Bristol 33905.

NOTES.

23-9-49.

1) The Committee recommends that a levy of 6d. per head, per ~~week~~ <sup>day</sup>  
or 2/- maximum per visit, should be made. The proceeds will pay for communal equipment not catered for by the Union Grant.

This will include.-

Paraffin, Meths, Candles, Lamp-glasses, Primus spares and replacing cooking utensils, etc. etc.

This will NOT include.-

Milk, Eggs, Vegetables and Bread, etc.

It is hoped that if a sufficiently large Kitty is Accumulated the surplus will go towards repainting the hut, etc.

The amount remaining is to be entered at the back of the log.

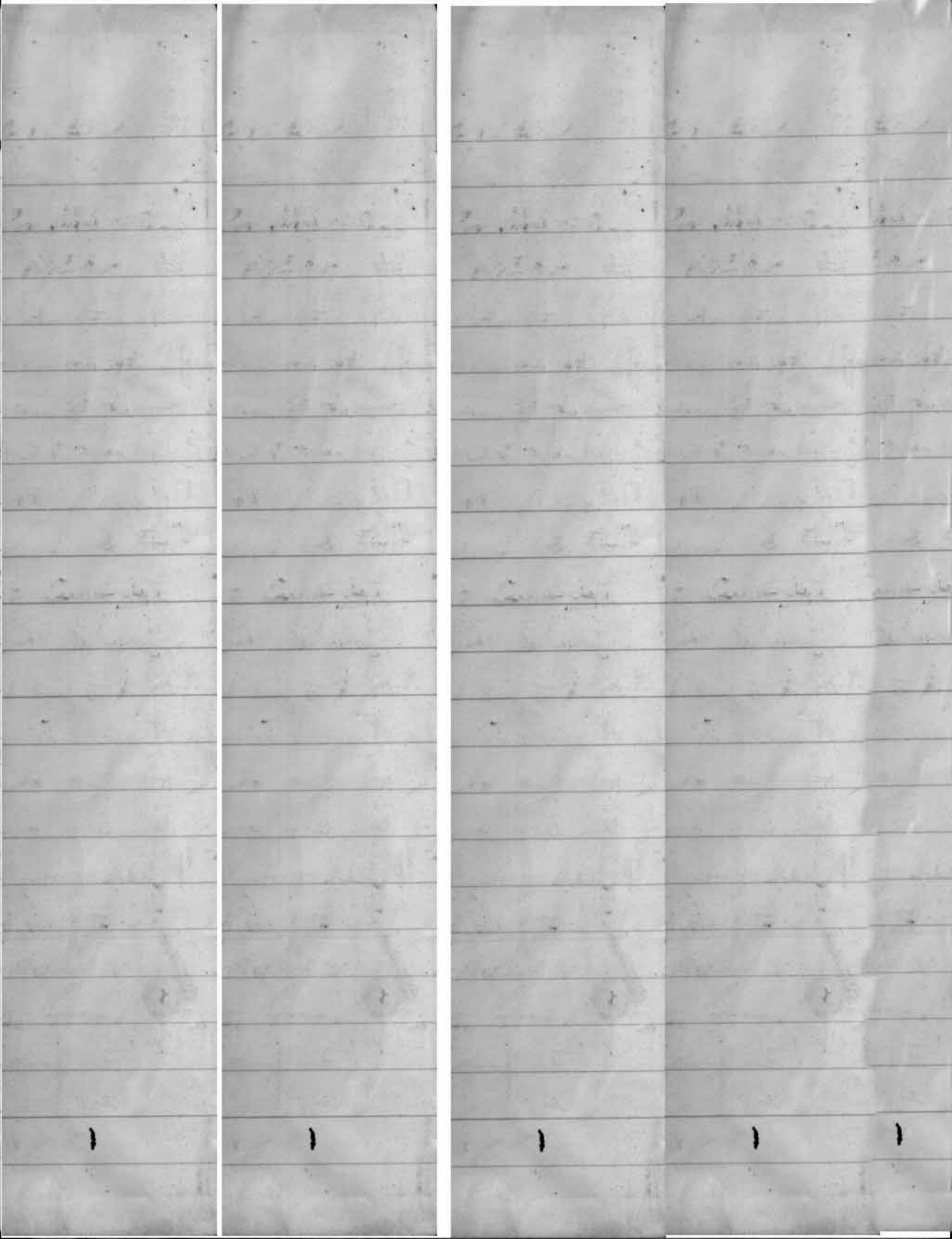
2) It cannot be emphasised too strongly that ALL WORK MUST BE REPORTED UPON IN FULL together with the names of the workers.

The value of the Log as a future reference book depends upon this.

Amended 1-4-~~47~~<sup>50</sup>

N. G. R. Backwell.

Hon. Sec.



# Camp log From 24<sup>th</sup> Sept 1949.

Weekend 24-25<sup>th</sup> Sept.

Bob, Diddy & Joan out by 10.15 bus, via Café.

Apparently on the 23<sup>rd</sup> there was an accident in G. B.,  
Somebody (from Weston) falling off the ladder in the  
Boulder Chamber. He is reported to have sprained  
an ankle but managed to get out and reach the  
Café. Mended & standardised tape (cut off 1<sup>st</sup> 10 feet).

Left for G. B. by 2.00 p.m.

Val out - 4.30 p.m. Prepared stew & chopped wood, etc.

P. Bird out by 8.0 p.m.

Down G. B. by 3.00. Re-secured ladder in  
Boulder Chamber.

Surveyed top of gorge in detail.

Ran a line traverse from G 15 to sump.

Out by 9.00.

Val & Peter had a meal ready.

Re-standardised tape.

Bed by 12.00.

R.A. Bendall.

25.9.49 Bob, Joan, Val, Diddy cleaned hut & replaced covers on fire side seats. They then left hut about 12.30 hrs. for Bristol. Peter made rough sketch of depression NE of Bath Swallet, after Val & he had traced the line of the crack in turf (part of it lies among bracken). Bob's <sup>earlier</sup> suggestion that the crack is due to sinking appears to be correct. It was not dug to drain a tent site at A because ① it continues in areas where impossible to pitch a tent & ② it is doubled at C where slope far too great for pitching tent.

The crack in the turf is approx 1 in to 2 in in width, & similar depth.

The dig in the depression <sup>B</sup> was made by Peter 23.7.49 to investigate reason for greenness of turf despite prolonged drought. Depth of topsoil was approx 9 ins. The subsoil was homogenous to bottom of dig, & consisted of clay with <sup>red</sup> sandstone fragments. Towards bottom of dig, the clay was damp to moist, hence greenness of turf.



Depression NE of Bath Swallet.



General direction of the large swallet S of Bath Swallet

General direction of Bath Swallet. Earth spoil from dig

Turf spoil from dig

Dig of 23.7.49 (Depth 4ft 6 in to 5ft 6 in)

3 ft (approx)

1 ft 6 in (approx)



Key: — = Crack in turf

T A T T = general outlines of depression; the tongue indicates slope direction in the conventional manner.

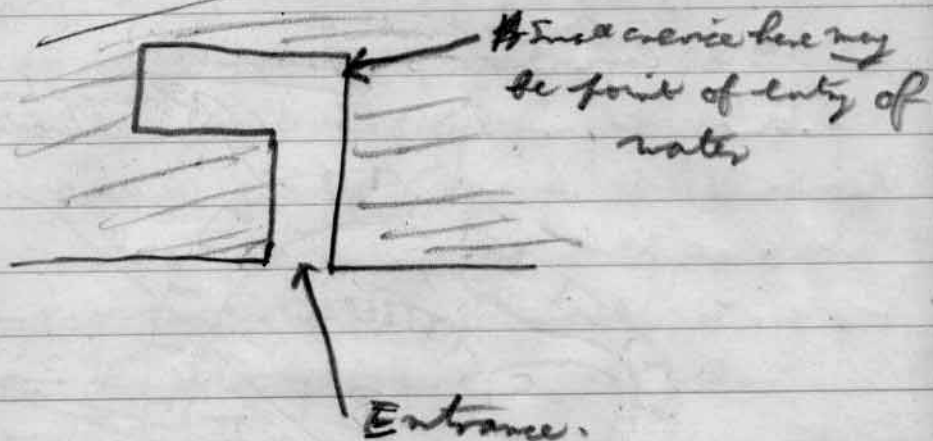
Note.

In re this crack I saw it sometime in August & it then appeared to have been dug since a little line of turf & soil lay beside it - thus

It would thus seem not to be due to sink.

A. Apshian. 5.11.49  
1 of 6

4. Peter went to Pickford Rising in afternoon.  
Entered rising, but found it does not  
"go". Could not discern <sup>what</sup> ~~at~~ ~~which~~ point  
the water comes from.



This there appears to be no opening, even  
below water, large enough to admit a man.  
This does not tally with tale (from Dutch,  
via Percy Naish) that Trotty got 70 ft.  
in Pickford Rising long ago. Returned  
to Hut. Left Hut before dusk, for Bristol.

Peter Bird.

Weekend. 1<sup>st</sup> Oct. Sat.

Noel, Joan, Bob out by 10.45 bus.

Left for G.B. 1.00.

Tom out by 1.45 Bus left for G.B. 3.45 pm.

Down G.B. by 2.00. Surveyed from bottom of Oxbow to Hall - closed on G.B. Then half way up loop.

Tom down by 5.00. Attempted to take photographs in main chamber but was thwarted by large numbers of wessess people who burnt magnesium in front of the camera and filled the place up with smoke.

Decided that the boy who fell off the ladder last week didn't do it in the Boulder chamber but in the 1<sup>st</sup> froto. Had a look at it, decided it was unsafe but didn't do anything about it.

Back by 7.00. Standardised tape.

Peter Bird out.

Left for Langford by 8.15.

Put remaining covers on seats on returning.

R.Q.B.

Sun.

Left for G. B. by 12.00.

Surveyed loop, Rumba Alley - to White passage and to top of White Passage. This completes skeleton of plan - detail 6 side passages can be filled in later.

Tom left cave 4.45 for 5.45 bus.

Bob Jean & Peter back by 6.30. Standardised lapa. Left by 8.00.

---

8<sup>th</sup> Oct Saturday

Noel, Tom, Dai, Val, 3 freshers and "2 chemists" out by the 1.45 bus, + car. Left for G. B. 3.15 pm Margaret + John left for G. B. 3.55 pm. General tour of the cave including long + short way in. Tom + Bob McCormick (fisher) entered by long way and went out through the crease! To Langford Inn in the evening; Val, Margaret, Tom, John, Peter Bird returned & to bed by 1.0 am.

9<sup>th</sup> Oct. Sunday

Up by 11.0 am. one fresher

came out from Bristol by Bike another by the 12.45 bus. Both were escorted down G.B. by Tom & Peter. Tom left cave early and caught the 5.45 Bus back to Bristol

Tom Leach

2 freshers & Peter returned to hut ~~at~~ circa 19.00 & left for 8.25 bus. P. Bird

Saturday 15th Oct:

Perie out at 12.20. Sal & Ged Carter out at lunch time. Tom, Bob, Dai, Iain out at 8.45 pm. Noel arrived via Bath at 5.30. Porthos and two female owls at work on T.S. Perie out same time and went surveying (surface) Survey party down G.B. also Sal & Carter to photograph.

G.B. survey party surveyed it hard side passing at top of White Way - goes 200 ft & comes within 30 ft of surface. Rickford in evening.

Sunday

Most people went home early.  
Percis & Noel digging at T.B.

Bertie & M. out in afternoon with deto.

Survey party to G.B. Surveyed St hand  
branch passage at top of White Way.  
Also goes about 200 ft. and comes  
within 25 ft. of ~~py. in. 100 ft. W. 1~~

Home via Langport in evening.

RAB

Thursday

Saturday 22-X-49

Bob Diddy Tom out by 145 discovered a fresher "Taffy"!

Bob & Tom took fresher down Rod's Pot. 4.45-7pm.

Went out with Bob & Tom down bath hole to to  
experimental blow. To Langport

N.B. Taffy was not beaten this weekend.

Sunday 23-X-49

Rained all day. New bog rest fitted & tested by Noel.

Saturday Bob Noel four of fresh down G.B. doing detail survey of Gorge. <sup>freshes observed greater Horseshoe Bat in entrance to G.B. WAR</sup>

Sunday Bob Noel from Survey Rhumba Alley & Bertie's Pot. Bedding Chamber G.B. Peter Bird & 2 Freshies Down Ricks G.Bats ringed - did 2 Alley to waterfall. W.P. Mackwell

NOVEMBER  
~~TRAVEL~~ 1949.

[Doesn't time fly!]

Nov 5th Saturday. Dai & Noel. Val & S. Coates out. Walter Val down G.B. photographing (exposures but no development) Bob & Joan not out. W.P.

Nov 6th Bertie Desmond A. Stude Tom Dai & Noel took party of Oxford Geologist round G.B. Peter Bird digging <sup>opposite Sidcot. Swagley</sup> in ~~Swagley~~ valley. There was a party of 20 students. They did well for a first trip. W.P. Mackwell  
Peter attacked small hole opposite Sidcot. P. Bird

Nov. 13<sup>th</sup>. Pete, Noel Joan Taffy & two freshers removed boulders from Pete's excavation. Pete & Taffy found small chamber at bottom of hole and excavated side opening to right, removing another boulder.

Nov 14<sup>th</sup>. Geoff & Val down G.B. before 11 am. Noel diverted bath stream. Noel Joan to bath 10:30 am opened up some cracks & filled them with cement. 1/2 inside walls of bath cemented using 1 bag cement & 2 bags sand finished at 4 pm.

Donald, Taffy & Peter attacked the yesterday's dig. Removed much overhanging, threatening clay, stones & boulders. Aim: to make it possible to remove several large boulders at top of rift, without bringing down the whole "cliff" of loose stuff into the hole. eventual aim is to dig mud floor of rift at point where rift is widest. Started digging at 11:00; finished at 16:45.

Thursday

Joan out to collect lib.

J. J. L.



Soan Tom, + Dai went down to the lane. v. cold and  
very wet, - ∴ very wearisome.

11.

Nov 20<sup>th</sup>. Val Geoff P. Bird Taffy, + Taffy's  
brother, B. Bardall + Neil. ~~ET~~

Peter Taffy + T's brother started to clear  
mud etc from rift. Great difficulty owing  
to large boulders obstructing passage.

Lantern in evening. P.B. home.

Sun 21<sup>st</sup>

Trouble with Taffy - great destruction in hut. Neil  
only prevented from strangling Taffy by Taffy's brother's

RAB N.B. slight lancers.

Val. B. half to Boushol.

Taffy + Brother drilled hole in their boulders

RAB + N.B. blew it up for them.

RAB cut top off finger during was lunging up. Bertie  
was summoned B saved up some.

Taffy + Brother + Donald down back Pt.

During afternoon a rabbit was rescued from  
a shot & duly eaten.

Left by 5.45.

RABendall.

Nov 26<sup>th</sup>

Mac., Val, & Geoff arrived 2 p.m. finding the old clothes  
shed open and two axes and the tether left outside; on entering  
the hut they discovered (1) the frying pan covered with congealed  
fat and numerous rat marks, (2) dirty knives put in with

? Taffy's  
? roof marks?

the clean cutlery, (3) the tea pot full of tea leaves, (4) the lids off a pot of jam and the coffee tin. Left at 2.30, visited Read's Cavern (saw 2 non-ringed bats in Z alley) as far as the waterfall. Joan & Peter arrived later, cut some wood. Rickford in evening & Joan & Peter back to Bristol.

Sun. 27<sup>th</sup> Nov.

Cut more woods left bunker well filled; departed 3.30 pm.  
G. E. Coates.

3<sup>rd</sup> Dec

Saturday

Margaret, John N., Dai, Alf, Tom, and 8 "hand rangers" from Bath out by the 1.45 Bus. Left for G.B. - with tilley lamp. were joined in G.B. by Taffy who had nobly fetched the 4 pints milk from Langford (on foot). Party in G.B. was assisted by Bob McCormick. Land rangers left 7.15 pm, for bus remainder to Rickford, <sup>after dealing with Taffy</sup> (Bob McC. → home). Dai Phillips returned to Bristol 10.30 pm. Bed by 11.45.

Ralf & Beth out to collect ladder & ropes (c. 6.30 pm).

4<sup>th</sup> Dec. Sunday

Up by 10 am.

Brushed leaves from roof of hut, also from water-catchment.

Ap. left about 1.0 pm. for an inspection of alleged Villa at Bob McC.'s home near Wrington. Taffy & Tom carried out investigation of Peter's rift, and John Nash's hole in lower twin brook. ~~The~~ 4 bats in latter - no rings - "lover horse shoe". Then carried out investigation of bath hole: smells of "blow" coined out on 22<sup>nd</sup> Oct. were noted - very extensive results - "half the cave" blacked up!

Taffy & Tom felled <sup>large</sup> chopped tree while John & Margaret worked up mountainous piles of dishes. Large ~~axe~~ <sup>axe</sup> and small felling axe ruined by Tom & Taffy respectively.

Tom S. Zealley  
Hm: Sec.

left by 5.45 pm. bus

14

Sat 10<sup>th</sup>

JIL, CMR, NGB, WRR, RAB, JSZ, by 145 bus.

Built a large fire and rally it.

Nothing else was done

Left for Langford 6.30

<sup>much</sup> where Taffy had a private exhibit  
with the antique top of the tankard.  
"a little tired"

Returned to bed - Taffy, Bob, Tom

Sun: 11<sup>th</sup> Dec.

Up 10.30 am. breakfast - a lot of washing up

Emptied Bath (precaution against frost) - wooden  
bung in explosive store.

left by 1.0 Bus

Tom Zeally

Margaret, John out on 12-45 to dump bit. That  
decided, no built up fire & brewed coffee. Tom & Taffy  
arrived back after walk, followed by Bertie & family & Tolly &  
ham & parcels from Tom. Sawed up large trees & filled  
barrels with wood. Tom, Taffy left 3.15 Bertie etc. at 4  
Marg & John for 5.45.

H.B

Sat 17<sup>th</sup> December 49

Tom Dai Noel down G.B. 145 surveyed detail of lower part of gorge from 40' to rump. ~~Arthur~~ ~~Arthur~~ joined by Arthur Ap who undertook most arduous tasks. Out by 6.15 Geoff & Frank photographed a out by 6.45. Wined & dined & to Richford. No Taffy — thank God! Peter to the dig in Lower Twin Brook Coombe where he attended to the stream course which runs into the dig — removed much ~~and~~ silt from it & rebuilt some of the dams (which are intended to trap silt). At about 16.00 to Whitcombe's Hole — a dismal little hole. Arthur Ap came to the dig while P. D. Whitcombe, & went on G. & B. Arthur home about 8.100

Sun. 18<sup>th</sup> Dec. '49.

Frontal attack on "Natty's" ham. ~~Tom~~ Noel, Tom, Geoff, <sup>Frank</sup> Glockling, Dai, left for Bristol about 13.00 hrs. Rain all day. No special work done. Nobody else out.

Mon. 19<sup>th</sup>

Cleared leaves & compost from back wall of Hut & from gutters. Cut wood. Put large stray sheets of corrugated behind Hut, small pieces behind clothes shed. Fire

has not smoked since midday yesterday —  
 doubtless it all depends on the way of the  
 wind (or on how well one dries the wood  
 before trying to burn it — a warm chimney  
 helps, of course). Donald did not arrive  
 Left Hut at dusk. Pete Bird

Thursday

Bertie Mot Noel Bob brought out barrel from Shupham  
 Saturday Dec 24th.

Bob Diddy & Johnny Pitts out in afternoon  
 met also with via Langford.

Sunday Dec 25th.

Bob Noel Johnny down GB 2:30 - 6 pm  
 finished plan survey of gorge surveying detail  
 above 40' Bob & Diddy home for family  
 Xmas.

A. G. Blackwell

Mon 26<sup>th</sup>

Bob & Diddy out by 1:30.

Left for GB by 4:30. Took 5 exposures.

Hurried back to meet Bertie who wasn't and

9.

didn't later either.  
Spent evening in hut.

Tuesday 27<sup>th</sup>

Diddy went home.

Found one of the new sauce pans which had been thrown into the nettles in an unmentionable condition by person (A) unknown.

Wool spent hours cleaning slit from said saucepan and prepared meal. Why dig bugs?

Wanted for Berta (who again didn't) until 9.00 & left for G.B. Took 5 coopers. Back by 2.00.

Wed 28<sup>th</sup>

Blackwell dismantled mantle piece and all useful tidying up was interrupted while he was prevented from reassembling mantle by Bot & J. Pitts who played with it for a long time. The end result was dubious & is on exhibition. Pitts

~~Pitts to Pitts.~~

finishing the job off with a special cement  
made to his own secret formula. However  
the joints separated out during drying & the  
advantages if any of such a mixture will  
be unknown. Left by 6:30 on  
at Blackwell.

Saturday 31 December 1949

Bob B. worked out on 10.45 bus via Cafe,  
Messed about with paint and left for P.B.  
by 3:30. Surveying side passages in  
entrance series, doing odd detail etc.

New Year's Eve

Besto, C.P.W., G. Pikes, G. Pitts, Mac, AHS,  
RAB, NGB, Blinkinup, Mike Gummel.

Shipham in evening and usual celebration  
in hut afterwards. A comparatively  
sober affair.

Most people left by 2.00.



1950

19

Sunday 1<sup>st</sup>

Members awake early with no appreciable hangovers (one exception).

Finding considerable quantities of liquor left over, breakfast consisted of Hot Gin & Orange, Sherry & Beer.

Get quite merry and get at noon. Noel & Johnny left by 1.00 bus.

Saturday 7<sup>th</sup>

Bob, Noel, Joan, Geoff & Val arrived by 1:30. Mac & Tom by 3. All over to G.B. at various times. Bob, Noel, Joan, blasted top of gorge in an abortive effort to get into letter box chamber. Geoff & Val photographing. Mac & Tom took Boulder chamber & "40 ft drop" ladders to bottom of gorge. All members explored hole near roof of gorge. Appears to be an outlet passage, choked with mud. Possibly the original exit from the gorge. All returned by 7:30 to hub, fed, & first 3 people above named left with Bertie & Madie. (via Shillam) Bed by 12:30 am

Sunday 8<sup>th</sup>

Up by 9, breakfasted, cut wood, etc.

Geoff Val Mac Tom left c. 12.45

-T.S. 17.

20.

Saturday Jan 14<sup>th</sup> Tom Pet - Noel down G.B  
at 2 pm hammered ladder bolted them together (75)  
and erected them to the passage between upper  
and dig & oxbow. ~~The~~ 2" of mud found  
covering thick stalagmite floor in narrower  
parts of passage which would not be broken.

Excavations were carried out in various parts  
of the passages. Mac Donald & Taffy  
arrived at 3.30. Mr Bendall will no doubt  
be pleased to hear that Taffy honoured him  
by wearing his boots.

Mr Geoff & Val left for Swildons (via G.O  
with Tom & Noel) Upper Series. Returned 7.30 Photographs  
not a success due to dampness of materials used.

Sunday Jan 15. Geoff & Val left early. Mac  
& Noel traded hut & left for 1st bus. Taffy  
also left.

W. J. Macdonald

Sat 21.1.50. Noel at by 10.45 down Rhino Rift with Arthur &  
Donald who arrived at that later <sup>than expected</sup>. Geoff & Val down Rods Pot.  
Party down Rhino penetrated past Charlie's blow into very  
small passage floor composed of boulders from roof ~~erected~~  
with stalagmite; dug & blow.

W. J. Macdonald

WANTED:- Chimney sweep with square brush to fit our chimney

21

to Rieford in Evening, Donald home.

Sunday 22.1.50.

Geoff & Val left 12.30. Desmond out 12.00, all left for houses & Bristol c. 1300 hrs.

D.G.B. & A.F.  
22.1.50.

27.1.50 Bob Joan Noel Tom & 2 Climbers out on 930 bus.

28.1.50. Saturday

J. Nash. out on 1.45 Bus. to Collect. Sleeping bag, ~~bag~~, Pleased up & made. inroads on the washing up, cushions etc... left kettle hot on fire. left for 5.45 bus.

Thanks John.

Bob & Bob the Davids & John down August out at 6:30 pm rather wet Noel, Joan, Frank Glocking & Shep down Longwood out about 4.30. Transported by Bencie & Desmond (under protest) to ~~Blunt~~. <sup>Val's wife suggested</sup> <sup>Now in Rhinos</sup>

Mae & Val out in evening (late) (with one tin of soap)

Sunday

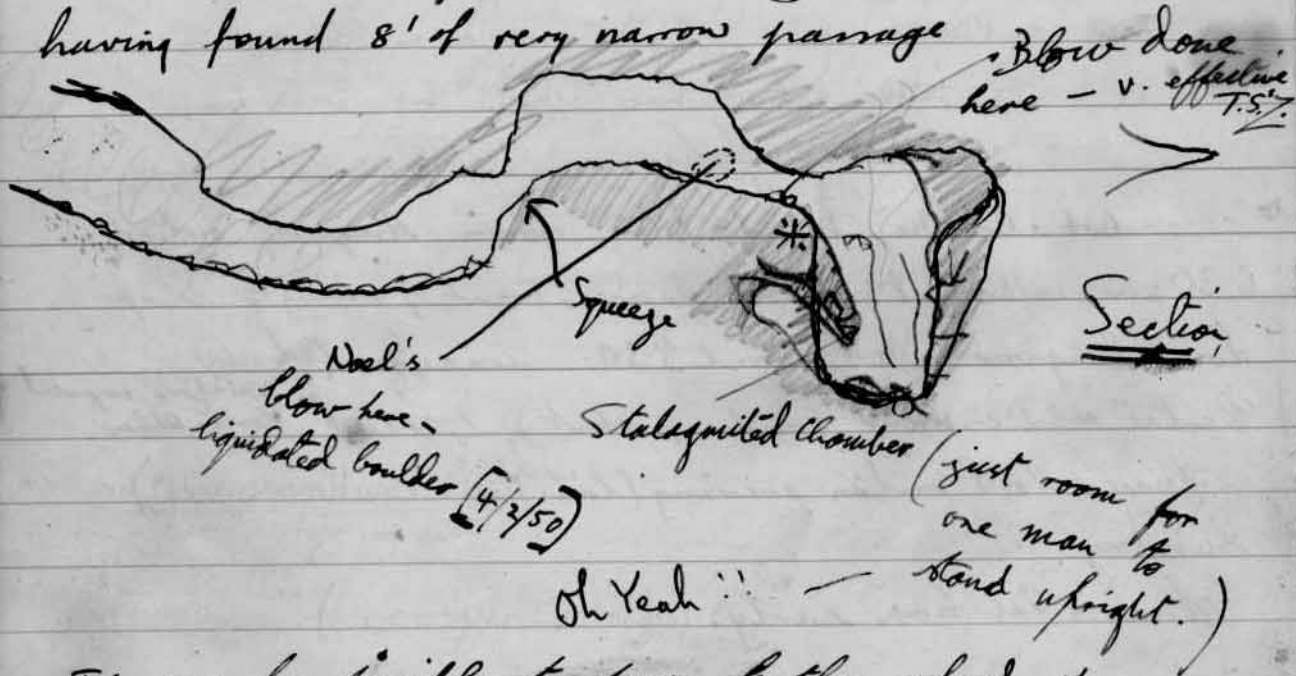
Mae & Val home early. (after a big meal).  
This is not true V.S.

Sat Feb 4th Tom & Noel out 1.45 bus. went down Rhinos Rift blew & left damaged up external wall into put through blinding rain storm by unknown route, at 8.15 to catch 9.5 bus.

R. Blackwell

22.

Sat Feb 11<sup>th</sup> Noel Tom Arthur & Trasher out on  
 10.45 Bus Geoff Ronk Val Shep by car; last  
 to Swildons down 2 1/2 hours inspected upper series  
 and found it wet. Party to Rhine Rift  
 left 12.45 armed with explosives and other  
 tackle for entering enormous system thought  
 to exit in Longwood Valley. Returned at 7 o'clock  
 having found 8' of very narrow passage.



It may be possible to force further ahead at  
 the bottom of the stalagmited chamber by a large  
 blow, but placing same would be v. difficult  
 owing to very restricted space. In <sup>the</sup> view of T.S.Z. the  
 situation is pretty hopeless. - T.S.Z.

Rick had a evening. Tom, Noel, Arthur & Williams left 9.5 for Bristol. Frank, Val  
 & Geoff left early Sunday.

Sat 13<sup>th</sup>

Des, A. Stride, Noel & I. out 11.10 a.m., left for Rhino & G.B. Noel & I. down Rhino Rift (35<sup>th</sup> Caving expedition there) Smashed stalagmite for about 1 hour Noel laid 2 blows to make the lower part of the cave easier. Examined blow later - no go, did further blow & left. In the view of N.S.B & A.A. the situation is not hopeless and after another really large blow it may be possible to get right to the end and inspect it with a view to further blowing as the cave appears to go on.

RAB, Joan, Mike Williams surveyed new dig, <sup>J.S.B.</sup> corrected detail of loop 6 re-survey White Passage.

Des & A. Stride geologising in G.B. - Decided Art gallery Solutional 6 Rumba Alley a fault. Debated possibility of exploring passage in roof of gorge on opposite side to art gallery.

~~Rickford~~ Tom & Dai exploded three charges in floor of Dig (G.B) after several abortive attempts. "ladder dig"

Rickford to Seymour Arms in evening.

Monday Sunday 14<sup>th</sup>. Repaired damaged Primus Tested ladders Cleaned filth of ages from parts of hut, and did various small but necessary jobs in & around hut including cleaning out drain etc.

M. R. L. well.

24.

Sat 25 Feb 1950. Tom Bob Noel & Diddy out in 1.45  
Ap out later. Tom & Bob forced off to G.D. at 4.0.  
Ap & Noel considered digging in Bath Hole. Ap diverted  
stream into Bath Hole. Decided it would be too  
wet to dig. Did refresher course in Sidcot Cave  
and Goatchurch Cave; returning at 7pm, found  
Diddy preparing extensive meal.

Bob & Tom found that only one of the 3 blows  
in the "ladder dig" had been at all effective. Drilled  
another hole 1 ft. deep (6 inch of Stalagmite) fired  
off 8 oz. gally. out by 7.30 pm.

Ate, Bertie & Molly out 8.30 p.m. conveyed party to Shipham  
Tom Bob Noel Diddy & dog by 10.15 bus to Bristol, Ap returned  
by B & M to hut.

Sunday 26<sup>th</sup>

Up about 11.30. - very fine morning - Breakfasted, dustwashing up & left  
by 12.45 a.m.

A. D. Jones  
26.2.50

Sat 4<sup>th</sup> March 1950.

Peter Bird & one BEC. bat hunting in goat church.  
12 bats killed - two refunds.

RAB & Joan down G.B. Last weeks blow had made a  
cave 18" diam with dry sandy floor. The stalagmite  
here is 8-10 ins thick and shattered. A hole was  
cleared for about 2 ft from the whole width of  
the passage. A long drill was forced back  
under the stalagmite and few sticks placed  
end to end.

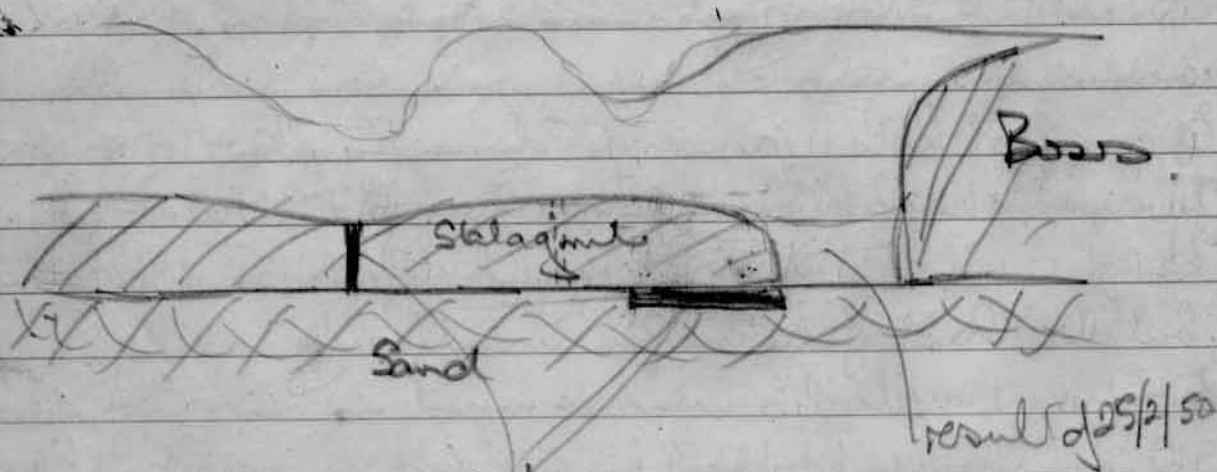
A one foot hole was drilled in the floor about  
five feet back down the passage. It is not  
certain whether it went right thru the stalagmite  
but the last few inches went very easily.  
Four more sticks were rammed in here.

The deton were wired in series & were eventually  
blown with two N.F. batteries, in series, after  
a long delay. The explosion was rather too  
noisy to be too hopeful.

One further blow will be necessary to  
completely remove the stalagmite  
from this section of the passage. <sup>An 18" drill will</sup> be needed  
after that a pick should will be needed and

The slagmite boss at the end of the passage will eventually have to be removed.

The slagmite further back in the passage has been cracked in two places by blast. The helictite is more or less intact.



Bored out in evening  $4/3/50$   
Sunday.

(16) Left for Rhine Rift 2:30.  
Met Bastis & Muller (over) then ~~two~~ ~~to~~ ~~see~~ ~~it~~  
look at the place decided it was very hopeful.  
Left about 9.

R. Bendall



Sat: 11<sup>th</sup> March

Noel & Tom out by 10.45 am bus.  
 Val, Geoff, Blake & Dory shep out by car. Geoff, Blake Dory &  
 shep down G.B. - general tour + 1 photograph. Noel  
 & Tom down G.B. to ladder Dig. Both last  
 week's blows had gone off. The farther one very  
 effectively, the near one had not cracked the  
 stalagmite but had blown a hole in the sand  
 beneath. Much broken stalagmite and sand (17 buckets)  
 removed from the end crater which finally measure  
 4-5 ft. long 2 ft. wide & 2 ft. Deep. It  
 is now possible to turn round in this end chamber.  
 2 lbs of explosive used in 3 further blows (wind in partly)  
 Probably not v. effective.

Bob. & Diddy, Peter Bird out by 1.45 - bedding  
 in front of Hut. Water Bird & B.E.C. type <sup>(Merry)</sup> <sup>(Honnans)</sup>  
 went off bat-ringing down Reads 5.30-8.15.

Noel to Archaeological Dinner at Blagdon.  
 Remained to Rich's bed.

Bernard out in Evening.

Sun. 12<sup>th</sup> March.

Noel & Bernard departed for work  
 in Rhio rift 1.15 pm. Back about 5 pm. Noel saw  
 change on stalagmite near bottom. Both decided that it

(31)

might be necessary for a mass effort to clear cave further back before the end could be tackled. Porthos out in afternoon. Ralf & Beth also honoured us with their presence. Went down Bath hole

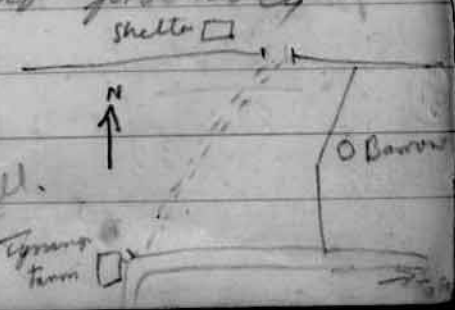
Mervyn Hannam (B.E.C.) & Peter to Rowberry cavern for bats - found none, & there are not likely to be any there. Then down C.B. & found & raised 1 L.H.B. & 1 (probably) Long Eared Bat. [N.B. definitely Long-Eared Bat].

Also found fly in Bath hole probably blue arced [no definitely blue arced]

17.3.50 Greenhall's friend out & down C.B.

18.3.50 Greenhall's friend to Bristol Bot for Tom Noel & Sp out on 10.45 also Val & Shep - down Goutchurch.

38 Noel & Sp to Rhine Rift, Found blow had done considerable damage to stalagmite. Clean debris two persons could then get into end of cave. Loud charge intended to destroy rest of stalagmite tip & back to flat, Noting mound probably 3 ft high 4 ft diameter no sign of disturbance.



Rhine is 85' from beginning of rift to bottom

Noel & Shep

Bob Tomo Jan down G.B. digging & blasting in latter dig  
 Removed 20 buckets. I laid ~~two~~ more  
 charge. Detonated one of last  
 weeks blows which had failed  
 to go off. No more blasting will  
 be necessary for a while.

Tom discovered that he could  
 get into the gorge with a 15' rod.  
 P. Bird returned from Ax bridge very  
 late with two friends

(Having done Oche Cave  
 where bats' feeding -  
 flies observed, but  
 no bats found)

Sunday, 19<sup>th</sup>.

Des Bernard A. Strick down

G.B. geologising.

+ Gutchurch

P. Bird & friend battling in Foxes Hole.

Remained cleared by camp.

Bob-Joan prepared a meal for Donovan Strick

+ Dembo who left without doing any working

up!

Peter Bird cleared up &  
 eventually left.

Monday, 20<sup>th</sup>.

P. Bird out.

Tuesday, 21<sup>st</sup>

P. Bird to Banwell Caves, where  
 ranged bats.

Friday 24 March Noel & Tom Wells Hall types out  
All to Richford, returned DRUNK

Saturday 25<sup>th</sup>:

Joan, Shep, Tom, out on  
10.45 bus; All down G.B., general  
tour - out via long way using the  
short length of chain to climb the  
pitch in the Boulder Chamber (no ladder)

A deal of bad language & complaints  
in Devil's elbow! Joan Shep & 2 types  
back early. 5 to Blagdon, returned late  
& consumed much talked of rabbit. Retired  
noisily to bed c. 3 am.

Sunday

Geoff, & Frank G. out by  
car, with Noel & Tom to Swildon  
(joined by Donald Thompson). To bottom  
(very wet) photographs (Trout's grotto).  
4½ hrs. Returned up wet way. Frank  
Hat in EXCELLENT CONDITION, swept  
thick & cleaned by the Wells Hall types

who had left earlier — leaving us a fine  
ATE & left 8:15 pm.

Tom S. Zalley  
(Not Hon. Sec.)

I should like to endorse  
Tom's statements about the  
condition of Hut — VERY UNUSUAL — VERY GOOD.

N.S. Blackwell

Hon Sec (unfortunately)

Thursday 30<sup>th</sup>

Noel out by 10:45 bus, Ap out by bike. Went down Goatchurch  
looked at maze & then by sheer luck found our way to the bottom.  
(N.B. Ap found a bat with a ring & a ring (U.S.S. 80) minus bat.  
To Whitcombe's hut, tea in cafe. Noel home to Bristol & Ap  
for a walk, including Queen's Island Plumage.

Friday 31st.

Up about 12<sup>noon</sup> breakfasted, washed up & it being rather cold departed  
for Bristol about 1:20 p.m.

NOTE Have taken paraffin cans down to shop  
please collect.

Please shut Tool shed door in  
future  
N.S. Blackwell  
Hon Sec.

A. H. S. D.  
31.3.80.

Saturday 1<sup>st</sup> April

Goof Coates & Brockling took 110 cuft cylinder of Hydrogen to G.B. entrance.

Bob Tom & Noel out by 1.45 bus. Collected 2 galn paraffin from Post Office.

Left for G.B. by 4.30. Down by 5.

Took 35 mins to get cylinder into Gorge.

Dug in ladders dig & removed 30 bucketfuls out by 7.00.

Back by 7.30.

Bertie & Mol out. Home via Shipham

R.A. Bendall

EASTER CAMP 1950

Thursday 6<sup>th</sup> April. Noel's <sup>Johnny Pitts</sup> ~~Johnny Pitts~~ out on 6.45 bus.  
Joan Bob Crick & assistant (Jim) out later.

Friday 7<sup>th</sup> April. Desmond out took Bob Noel Johnny down G.B. Marked stations with whitewash & examined loop & white passage & orbou.

Crick & fruit & Joan surveying in Guffy Field.

Traced line of two parallel faults supposed to connect with Rhumba Alley.

Burns Dembo & Owen Rock out.

Saturday April 8th.

All over to G.B. early except Pitts.

On attempting to enter G.B. we were detained by Pitts, bleeding & needing medical assistance. Joan detached to go back to hut & sew him up.

Balloon rapidly inflated & illuminated by light from tulle lamp. Height of roof of Gorge measured at stations & intermediate positions from 9.35 to 9.14 at top of 40' when balloon burst.

Bob Crick & Jim measured height of roof & did cross sections in Loop.

Noel & Tom Thomson out through ooze.

of G.B. Blackwell  
1 hour Sun

Sunday.

Met Bertie in G.B. at 2.00.

Finished off ballooning and Johnny attempted to make a photographic record of the achievement.

Took cylinder of tulle lamp out of cave.

Roddy & J. P. Fisher out in evening - Shipham

Goan was scared from her bed by a  
strange man.

### Monday.

Owen & Tom T. left. RAB spent a strenuous  
day drawing up sections.

The Survey team spent several hours poking  
in Lyatchewch while Mr Pitts attempted  
to photograph an imaginary survey, a  
little trouble was experienced with the lens paper.

The smooth running & high efficiency of the  
operation was a consequence of intense  
calculations, ~~sound~~ <sup>profound</sup> knowledge &  
great insight.

Nothing else was done.

Tuesday. Crick Jim & Diddy fixed 4 points  
in field 5 of Gouffy field for contouring.

Noel & Johnny Pitts to Rhine Rift. Did 2  
blows expending 1 lb Polar Ammon B.

Bob & Diddy home in evening.



Wednesday. Potts to Britd in morning  
Crick Jim & Noel to Wriington shopping in  
morning. Attempted to contour in afternoon —  
wind stopped play. Made a support for  
table in evening.

Thursday [13] Crick Noel & Jim took Merrywood  
schoolboys down Goat church. <sup>established a new</sup> ~~found one~~  
Bench mark, owing to instability of the one opposite Bungalows. <sup>quite</sup> ~~quite~~ <sup>to follow</sup>  
~~of Crick's bench marks~~. still too windy  
for contouring. Crick computed Woolagh River  
survey in evening.

W. B. Blackwell  
Hon Sec.

Friday 14th. Corrected bubble in Indian clin.

~~Friday 14th~~. Over to field South of Greffy  
field & completed contouring.

Bob out in morning dug in bog assisted  
by Jim. Computing Woolagh River Survey  
in evening.

Saturday 15th Bob & Noel finished digging  
Bog reaching a depth of 6'. Started building  
surround to bog. Crick & Jim did a reconnaissance

to the North & South of Burrington Coombe  
found a marked one main control pt.  $\frac{1}{4}$  mile  
S of Blagdon Pillar & two points on  
the edge of Burrington Coombe

Sunday 16<sup>th</sup> Jim left by 1pm bus  
Noel Crick & Bob carried on constructing  
box. Bertie & Molly out in afternoon  
also Porthos.  
Home via Shipham.

Sat 22<sup>nd</sup>

Bob, Tom & Mike out 10.45.

G.B. by 3.00.

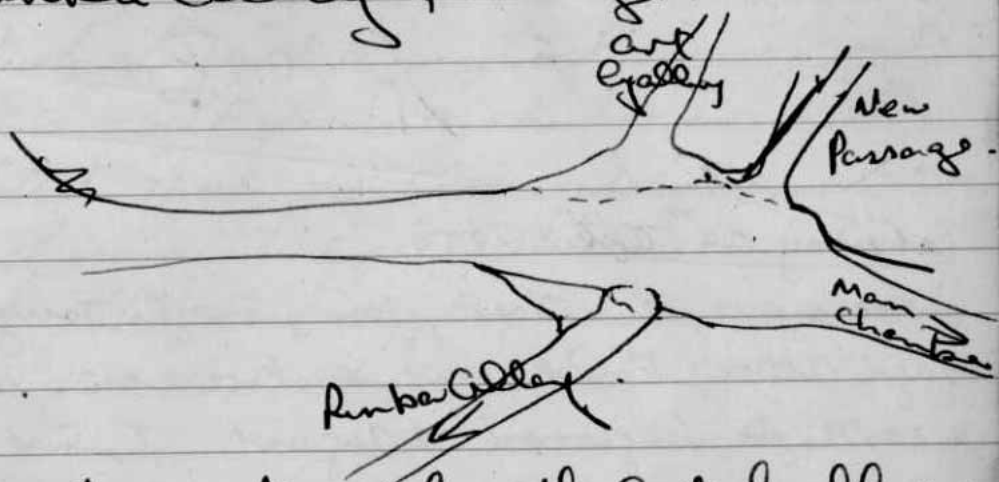
Removed Iron ladder from dig & replaced by  
old RAF type wire ladder.

Received <sup>FOR SHAME!</sup> sundry advice & assistance from  
members of A.F.S. & party under Davenish.  
in transporting ladder to hole & resort  
to the Art Gallery (White Passage end)

Found it led, via a tight squeeze  
to a passage about 40 ft long.

There are obvious signs of previous  
 exploration. The far end is choked  
 with stalagmited boulders.

The passage appears to be a continuation  
 of the Runka Celly Passage.



It is different in nature from the Art Gallery  
 although || to it. There are definite signs  
 of faulting. The choke at the end  
 may be worth blowing.  
 There is plenty of room to work.

Mike home by 9.5 bus  
 Rickford.

Sunday

Finished off & christened new Bog.

Started on new fash Pit.

Maggie & boy-friend out but refused invitation to join christening Ceremony.  
Left by 5.45 bus

R. A. Bendall

Saturday 29<sup>th</sup> April 1950.

Noel, Tom, Geoff, Dony, Morley, Hugh & Frank out in two cars. Left about 2.30 PM for Longwood & August. T, G & Dony down Longwood out about 6.00. Others to August - very wet and skidding - just managed to crawl out at 7.0 P.M. Back to hut, dined and to Rickford by 9.30. Morley, Hugh & Frank stayed the night.

Sunday 30<sup>th</sup> April

Rose early except Morley. The hut was cleaned thoroughly, one tree chopped down and mostly sawn up; fash brushwood around hut burned; the drain was cleaned and extended.

PS Lost Union Tie probably in blanket.

39

and a new sump installed. It still still needs extension and a soak-away at the end. Left at 6.0 PM.

F.G.

Sat 12th May.

Bob Tom & Noel out on 10.45 bus. Examined tank & bath of hut & suggested minor modifications. Left for G.B. about 4 pm. Bob checked detail sheets of entrance & long way in Tom & Noel surveyed EAST PASSAGE & did a blow out the end attempting to destroy algae boulders.

Hugh Morley sheep & Hugh did Rods Pot & left in evening. Bertie Molly & Crick out in evening & to shepherds Bob to Timbony.

Sunday 13th May Tom & Noel to Barrington camp via Richford examined tools which were scattered about a rocky & replant them under to what burrows. Back to camp cleared up burnt brushwood. Examined bath & studied nature in bath swallet. Decided that bath should be cemented soon. Gash pit excavated through 1ft of solid limestone rock.

M. Blackwell.  
Hox Sea

Saturday 20<sup>th</sup> May Out on 145 bus.

Bob & his friend Hubert over to Guffy field. Jeff Coate & Jean out.

Tom & Noel aided by M. Gumme finished cementing inside of bath and dug gully at side filled it with broken rock & cemented it over. Bob & Hubert started turfing.

Bob Hugh & Gumme to Bristol Noel & Tom to Rickford

Sunday 21<sup>st</sup> May Blew in gash pit 6g "B". Very successful. Rain of boulders on roof. None penetrated. Day rubble out did another blow left 5<sup>00</sup>

Friday 26<sup>th</sup> May. Cork out at 10.P.M. via Rickford.

Saturday 27<sup>th</sup> May Bob Noel Dembo & friends Diddy out. Bob & Crick dug a new channel for Bath stream & inspected Bath - filled with mud by 2 specified small boys. Noel Crick & Bob planted 14 young trees in bath wall. Decided that a coating of turf was necessary on bank near bath so did a "Portage Stamp Graft" of clumps of grass onto nests nettles ferns

forget me nots etc. Noel finished digging out  
gash pit. To Rickford in evening.

Sunday 28<sup>th</sup>. Up AM. Dembo planted abative hedge.  
Bob & Noel tamed Bog, plus sent. Visited PM  
by Bertie & famille. followed by Mr. Dermish  
with a long yarn about destroyed Stalectites  
in G.B. and campers outside the car who  
may have been the cause. Visited Ashbridge  
Police in Re. the above. Collected some more  
and back to the hut for grub. Rickford  
in the evening. Bertie & Molly in camp on  
return. Poky die until 12.

Monday 29<sup>th</sup> Dembo, & Friend (Len Farguhar)  
drove Diddy & Noel back to Bristol. Erik &  
Bob completed contouring of NE corner of  
Gruffy field (near Reads Grotto) to complete  
surface detail, assisted by Bertie & Molly.  
Back to camp, & Shipham & Bristol a last bus.

Tuesday 30<sup>th</sup> up early & to Bristol. Re car survey.  
Wednesday <sup>with</sup> Returned to London.

P.T.O.

J.H. Parkin ✓

AM Wednesday. Swarm of bees settled on fir tree SW of Hut, marked with newspaper. They have moved again but not very far. Pattersons not interested. ~~done~~

Sat. 3 June 1950.

Tom & Noel out 10.45 bus.

Skinned new water tank pt 1/2 bot. Chloris in Arthur & Percie out. Taped bank of bath. Tom did some more powder tamping. To Ruchford joined by Bertie & Moll also Val. Maggie & boy friends out in evening. Vic hunt late in evening.

A. S. Stuckwell

Mon See.

Sunday 4th June 1950.

Up early - c. 10: a.m. Run up Pothos.

- then to Plume. All tools brought back from Bussington Camp except the wheelbarrow. Pothos out, all dug at T.S. - very hard



very hot Noel descended into the bog & rescued a baby rabbit therefrom, - too small to eat. Ralph & Beth out in afternoon ostensibly to sunbathe, real motive not revealed. Tom & Noel left 5.30. Rest about 7 p.m.  
A. A. A. 4.6.50.

Tuesday 6th June 1950

Percie & Noel out on motor-bike in evening. Noted bath full to overflow no outlet running from plug ole or pipe underneath settling tank half empty. Bathed & watered trees.

Saturday 10th June 1950

Mike out on 1.45 bus & followed by energetic Ap on bike (push Society).  
from battle in foreground descent of Goatdown & return to find some odd types (Geoff & Frank + female of species) just arriving. Geoff, Frank & females left before 9 P.M. Bob, Noel, Tom, Peter  
Bid out about 10 P.M. C.R.C. type also arrived.

Sunday June 11<sup>th</sup> 2<sup>nd</sup> <sup>also</sup> C.R.C. types, Tom, Bob, Neil,  
Mike Williams down A.B. to all back to Bristol in  
evening.

Perry out, 12 noon, - with Ap to E. Mendip (and  
thence further S and E to near S of Wanscombe where  
cathunks at Cow Down were examined and a rough  
sketch map drawn. Returned to hut at 7.30 pm.

Mr. Grindley (an early member of U.B.S.S.) & Mrs. —  
arrived during afternoon in search of Porthos &  
coraver. Eventually found same at Mrs. Cook's  
farm in Dunnington village. Perry left about  
9.30 P.M.

Monday June 12<sup>th</sup>. Arthur ap. Left at midday.

Peter cleaned Hut, photographed entrances  
of Rods, Box & Bath & Swallet. Looked at

\* Depression N.E. of Bath Swallet [see entry for  
25.9.49] — no evidence of further sinking.  
The dig of 23.7.49 there has been mostly  
filled in. Peter left in afternoon.

Tuesday June 13<sup>th</sup>. Peter Bird out at 4 P.M.

Added to estimate structure. Swept Hut roof &  
cleaned gutter.

\* Circular formation in swallet (according to Crick)  
 dug by campers to prevent flooding now  
 due to sinking — C. Court 17/7/50

Wednesday June 14<sup>th</sup> Mary's Home out 3 P.M.

Scrubbed tables. Did Great Oones.

Thursday June 15<sup>th</sup> Returned from Cheddar at  
3 A.M. Up at 1 P.M. Left for Bristol 4 P.M.

Saturday June 17<sup>th</sup>

Perie out - 10.15 pm.

Mike out on 10.45 bus - swept hat & dropped  
fool & Tom. out on 1.45 4 girl guides arrived  
for visit to G.T.B. <sup>Dep. and later by P.C.</sup> to Richford in evening

N.B. Tom has not paid his hat dues  
2 weeks

Sunday June 18<sup>th</sup>

Rained in morning - no work done  
and Mike left to catch 1 pm bus to home  
followed shortly after by Arthur on road  
Mike, Noel and Perie worked up and  
walked over to home of Sam in afternoon  
where Samuel Young and his brother  
were interviewed.

4 with regard to forthcoming Geographical  
Camp and work done in Goutley

held to which Young is agreeable.

- 21 Regarding the locking of Q.D. In this connection a lengthy discussion ensued, in the course of which Young expressed himself fairly strongly about R.C. & from looking and the Surveyor and members of Abductee R.D.C. The collective view arising from the negotiations appeared to be that it is pretty poles to do much about removing the cover as someone is bound to come along and remove either the lock or cover. Ultimately, however it was amicably agreed that a lock and chain be put in position and a key sent to Young, who contributed a length of chain to the spot and agreed to replace the lock if it should be stolen otherwise removed. J.

Tuesday 20<sup>th</sup> June

6 Geococysts to Rowheroois for pass-up.

Tree is waiting to be cut up; at present lying near boundary wall to N. No sites available.

AHS

Saturday 24<sup>th</sup> June

Weather mild & fine at 4 pm. Collected approximately  
morning but not left to survey Chaddambury

Barrow (T 169) by triangulation & offsetting to Weaver & home  
to find Strides Prothes<sup>see page</sup> had ruined remaining tin opener, - so  
used hammer & chisel. To Richford in evening then to hut  
lit "small light" fire bed circa 1 a.m.

Sunday 25<sup>th</sup>

PLEASE NOTE

There is a Wrens nest just by the inner bog seat  
- so take care with your aim.

Up at 11 a.m., did some Barrow excavation at T-6.

plotted survey of T 169, later to Beacon Butch & corrected  
detail on ground. Finally tidied up & departed  
by 8:30 p.m.

A. Pyburn

Friday June 30<sup>th</sup>

Geophysicists arrived all day: Leo, Bill Langford, Hugh Murchie, Owen Lock, Chris Court, John Evans, Gorkin Menon, Dave Parkin (Hull). Hut cleaned and cleaned up. Arthur App out in the afternoon. Jack Cooper arrived in the evening in time for some grub. Down to Rickford in the evening for some liquid refreshment and singing. Found Kay Dixon in the hut on return - general reunion and song song.

Saturday July 1<sup>st</sup>

Reported that Farmer Young refused to allow his morning grass over GB to be trampled down by geophysicists and others. Decided to work at Tydings and continue the work reported in the last issue of the Proceedings. Party out here all day.

To Rickford in the evening; joined by Noel, Bob, Joan, Diddy, Molly, Berie, Geoff + two other chemists. Smoke room crowded out in fact. Much noise.

Phil Cashmore picked up from Bristol in morning.

Sunday July 2<sup>nd</sup>

Dave, Phil, John, Chris and Owen down GB the long way and back out by the short way. Others traversing at Tynings all day. Ap and Kay to Rickford.  
To Rowbarrow in evening - bloody awful sides.

Monday July 3<sup>rd</sup>

Heavy rain all day. Various excursions to the cafe for coffee. Ap and Kay to Bristol; Ap out later having drunk his bus fare home in Bristol. (By mistake so went home another way within the last 10 miles). Dave King out in morning. John and Chris to Bristol for Gradnands Dance.

Car trip in evening by Bill and Leo via Weston and Blackm (some scratching in the duff for rhinoceros bones - successful) ending at the Bath Arms Cheddar.

Tuesday July 4<sup>th</sup>

Finished Tynings sculler traverses and started on an investigation of Tynings West Barrow.

Dinner at the Sycamore Arms, Blackm in the evening. Ap left early in the morning. John and Chris arrived back in time for the dinner.

Wednesday July 5<sup>th</sup>

Traversing continued over the West Barrow - very interesting results.

Small party to Langford in the evening.

Thursday July 6<sup>th</sup>

Traverse started over Bath Summit by the Camp.  
 Rain stopped work in the afternoon. Dave Dainton out from Bristol.  
 Ceremonial dinner - the Burnington Beauties Blast -  
 in the hut in the evening attended by Leo, Bill,  
 James Hugh (Hall), Bertie, Mollie, Jack, Owen, Dave, Phil, Chris,  
 John, Hugh, Gorka, Dave Dainton. Much ale and singing.

Friday July 7<sup>th</sup>

Chris, ~~Joe~~, Jack, Phil, Dave and John down Lamb Leev.  
 Very good trip. Transport by Bill and Leo.  
 Dinner at the Bath Arms Cheddar in the  
 evening, back to camp for coffee.  
 Peter Bird out in evening; Dave Dainton left in the morning.

Saturday July 8<sup>th</sup>

Phil, Dave, Hugh and Gorka left in the morning.  
 Percy arrived from the Plumbe.  
 Peter and John went digging just below Groatchurch.

W. Owen Lock

John back to Bristol. Percy up from Plumbe  
 to Rickford & had convivial evening.

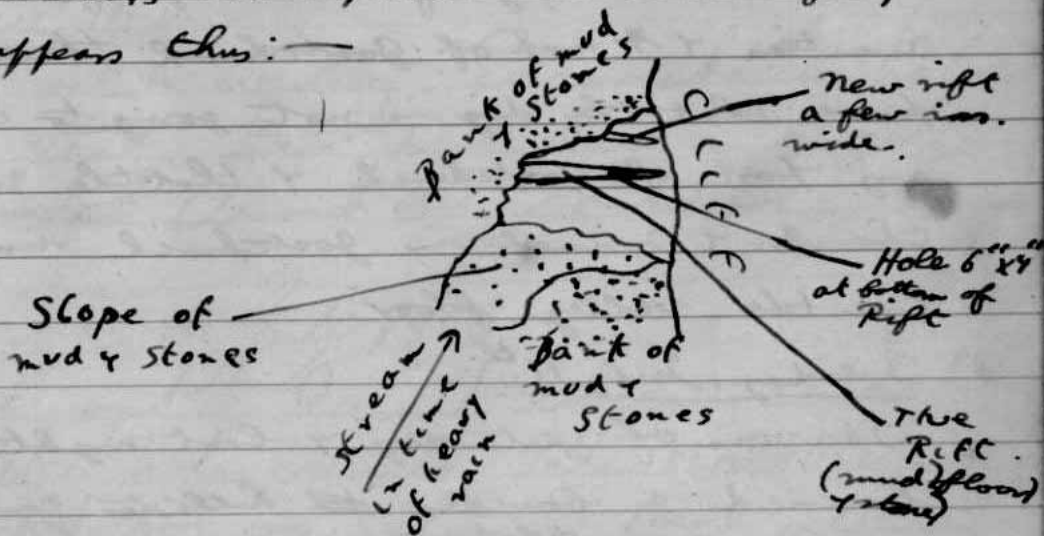
8-VIII-50



Sunday July 9<sup>th</sup>

Tack up at some insantary hour, packed & on way out to the big bad world with Bill Langford. Being a lazy inconsiderate beast he wishes to record the appreciation of the "Hull Types" for the smashing times during the past week. D. J. B.

Digging near Gutchuck in the afternoon by Owen, Chiri, Perry and Peter. Owen left by 5.45 hrs. Removal of some boulders has improved view down rift, which appears thus:—



A 9 ft. rod was pushed down the hole; it stuck on an obstruction, leaving not more than 1 ft of rod visible. Stones pushed down hole ~~fell~~ rolled & bounced into a rift or chamber with a pleasing sound. It sounded as though

The ~~right cavity~~ rift is much wider just below the hole & contains a nice slope.

Perry returned to Plume in evening.

Monday, July 10<sup>th</sup>.

Chris & Peter dug at the hole in Goochuck. Joined by Grindley. A boulder overhanging the hole Chris & Peter to Bristol all day for food supplies & extra labour for dig. No work done. Study of "Proceedings" for early Twenties & map of Goochuck therein, proves that the dig is not going to coincide any part of Goochuck & that the water chamber & tunnel in Goochuck run away from the valley floor.

Tuesday, July 11<sup>th</sup>.

The rain of yesterday & last night has loosened a boulder ~~at~~ hitherto considered safe. As it ~~overhung~~ <sup>overhung</sup> the hole it was removed, together with loose stuff which it had supported. Grindley, Chris & Peter dug at the hole for 4 or 5 hours, ~~reducing~~ <sup>reducing</sup> height of the bank of mud & stone by 1 ft. Probably a vain task. In evening, <sup>Grindley left</sup> Bob Bendall,

Bob McCormack & Swedish friend of McCormack's out. Bob <sup>B.</sup> looked at hole & advised timbering before blowing. Bob M. & Swede did Bath Hole & Rod's Pot. Got 2., Bob M. & Swede departed. Percy out for evening.

Wednesday July 12<sup>th</sup>

Chris ~~is~~ left in morning. Donald Thompson out in morning; he & Peter started timbering the hole. Donald left 1 P.M. Peter left 4.30 P.M.

Friday 14<sup>th</sup>

Peter out in evening. Examined his hole & found that there had been a slight fall. ~~had~~ Cleared out boulders.

Sat. 15<sup>th</sup> July 1950

Noel out. Rained heavily. Looked at Peter's hole while Peter scrambled. Retreated from rain storm. Noel collected Type 2 companses etc & took them to Bontel.

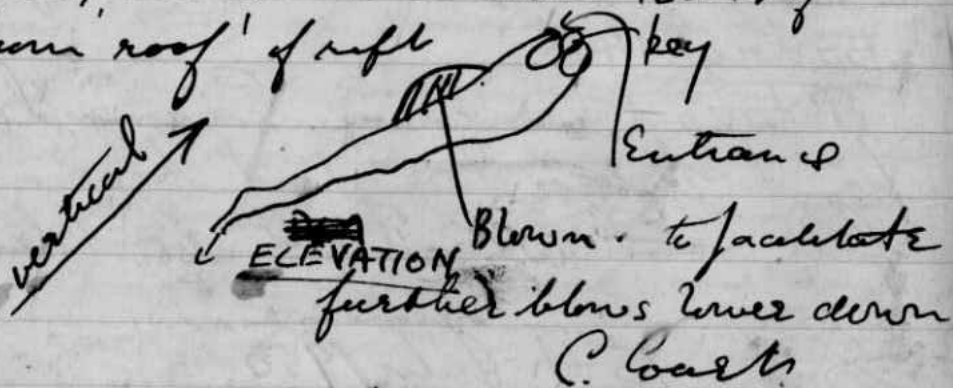
Sunday

Bob Blunk out - to GB to complete Surface Detail.

Noel Peter & Chris to Birds-Nest shored up LHS of entrance  
cleared out remaining muck from floor. Noel & Chris left  
left @ 5.0 pm Chris & Peter with Molly & Bertie to Rickford, Chris  
& Pete early to bed.

Monday 17<sup>th</sup> July.

Chris & Pete to Bristol 1.0. Chris & John back 6.20 pm  
over to B.N. Dig. Percy arrived at B.N at 9.0 pm. Two  
blows made, second one removed 1/2 cwt of  
rock from 'roof' of rift



Tuesday 18<sup>th</sup> July

John Chris up 11.0 am, felled  
tree " to Galatunris at 3.30 pm  
did two more blows, succeeded in making more  
'room' in the rift. and effectively blocking  
the floor, cleared out rubble.  
Ret 11.0 pm.

C. Coats

19 July Wed.

John Chris up 10.30am  
breakfast, cleared up but  
left

C. Court,

Monday July 24<sup>th</sup>

Ap out 11 p.m from Timbury by  
push bike.

Tuesday

Up 1 p.m rained all day. Richford in evening

Wednesday

up 10. visited Birds Nest later to Doldbury  
After dinner Sandy Browning friend he arrived, drove  
over to G.B, looked at entrance, cover bying outside but  
no sign of any padlock. Then to Blagdon - Q.A. other  
left for Bristol up home via Richford

Thursday

Up 10.30 - Into Bristol for day  
returnal after a convivial evening

Friday

Up late, worked on T.5 in afternoon  
Richford in evening

Saturday

Shopping in Blaydon a.m. Afternoon did some work at 1.5 - very hot. Then walked over to & looked at Gorsey Bigbury in evening to Richford.

Sunday 30<sup>th</sup>

Up 11.15, raining hard, breakfasted, packed up, wrote up log, left by 12.45 - magrathens. Tom Z. + wife out 2.0 pm. - only sign of Apr. was recent cycle track in mud, & a warm bed (ventily). Swept & tidied Hut. Watched rain come down steadily; left 5.0 pm.

Thursday Aug 3<sup>rd</sup>

1) ai out by 10.45 bus to fetch clothes - now doing a little carrying in S. Wales. Back to Bristol by 1.05 then home to Newport again.

D.C.P.

Sat 5<sup>th</sup> Aug. Buck & Jim out 5.30 ex Lander  
 to Sota. Bertie & Mollie out. to shiphan for  
 the usual.

Sun 6<sup>th</sup> up at 8.30. Fixed 5 control points, enough to  
 supply the Cams etc in West Twin & lower Combs.

Dimbo turned up at 8.30 P.M. Plus a Jim + a Swede.

Alan Bengtsson, Ralph H Krogius.

Monday 7<sup>th</sup> fixed 2 additional control points, and  
 ran a Travers down the West Twin Brook, then  
 fixed the position of the two entrances to Sitchwell,  
 and the entrance to Sidcot, B.M. Dig and another  
 hole lower down. Dimbo left at 5 P.M.

Tuesday 8<sup>th</sup> to Buck & Jim down GB, in Via  
 Boulder Bhambr (what happened to the ladder)  
 and out by the new way. The key hanging  
 up in the hut is no good for the present padlock.  
 Jim back to Southampton 5 P.M.

Wednesday 9<sup>th</sup>. Plane taking AM. to Bristol with  
 GB map PM. To Rickford to ground. to Bed.

Thursday 10<sup>th</sup> also F.A. up out at 1.30 to  
 Gorsey Bigbury. - checked up on survey which seems of  
 dubious accuracy. The assumed in Proc of the position of the  
 remnant sections is also wrong.

48.

Friday 11<sup>th</sup> ap: Cork continued survey of comber  
from Rjun & with west Twin to Raynors, fixed position  
of all likely holes with the exception of that  
opposite Avilines, which will have to be  
intersected from the top at a later date when  
the undergrowth is less plentiful. Bob out 7:30

~~all the holes~~. Bertie out, and all to  
Shipham (Mollie's broken it off). - What?

Sat 12<sup>th</sup>. Pissed all day. Ruskford in evening

Sun 13<sup>th</sup>. Jerry & Tim out A.M. assisted with  
Comber Survey. Bertie & Mollie out P.M.

also assisted. Bob away 8:25 hrs.

Mon 14<sup>th</sup> Cork away 8:30 AM.

---

Sat 26<sup>th</sup> President & Hon Sec out in morning.  
Examined bath & found that heavy rains had  
washed portion of bank into the water. Cleaned  
out bath. Mike Gunner arrived. Haying hedge  
commenced. Gunner demonstrated the official forestry  
method of felling trees. One tree felled unskillfully,  
& 2nd tree caught in another tree, & could not be  
brought to the ground. The other tree was then



felled and caught in a further tree. Operations temporarily discontinued.

up out late

Sun. 27 Aug. 1950

W. Strahman, A.P. Simon in camp. joined later by Mike Gummer + E. Grindley - child ♀. Walked over to G.B. cave. on way looked at new tumulus on slope of Blackdown opposite Tyrings group. Originally found by Blackwell (ref # 31/472/567 grid). Suggest catalogued as T11A or similar number.

Looked at Old Great Swallet + agreed that st. passage should prove a profitable dig.

Visited small tumulus S.W. of barns just E. of Gruffy Field. Has this a catalogue number?

Visited Rhino Rift. Longwood cave. Much water going down.

Continued hedge buying in camp.

Portliss Farm the Portliss dog out for meat.

W. Strahman

T186A

Mon. 28 Aug. 1950

Found whole of contents, 3 lbs margarine + 1/2 lb butter + 1 lb cooking fat, of "fats" container all contaminated, grossly, with paraffin. This derived

from Tilley Lamp which had been left pumped up & valve only closed. In future TILLEY LAMP MUST NOT BE LEFT WITH PRESSURE IN TANK.

Found yet another mug, (the 7<sup>th</sup>), partially filled with a leathery substance of some kind with a generous growth of fungus. ? was last user of but instituting investigations into a new anti-biotic. If so it is suggested that the experiments shld. be conducted elsewhere.

A very wet day. Repaired lamps & primuses. Got wet several times. Made a "soup" extract three times out of tea clothes. Perhaps not Persil white result but a distinct improvement. M. Strawn

29<sup>th</sup>. E.K.T. & AA in Camp. Another wet day - more or less. Visited a number of sites on top of Mendip. - served at Castle of Comfort with thin <sup>brown</sup> watery liquid apparently substituted for better beer - definitely not a place to visit. Shopping at Longford. Continued cutting down

trees preparatory to hedge laying  
 Re-observed line of sinkholes to south of Green Ore-Shepton  
 Mallet Road just above floor of valley. These are  
 not far from Green Ore Long Barrow.  
 Also remarkable to see floods out on Cheddar floor &  
 the alleged Richford overflow spring in full spate.  
 Certain amount of further cleaning operations in hut.  
 A. Alpin

30<sup>th</sup>

Woke just after midnight to a pissing day, still pouring  
 at 10 a.m. Continued laying hedge. E. Girdley  
 & family called and assisted in removing Trats car  
 from the slough. Ate a large quantity of food, including  
 cream & looked at the rain.

31<sup>st</sup>

Still in camp; hut floor nearly awash.  
 Visited Bristol - shopping - purchased for  
 camp use 1 Petrol tin - stored in tool shed  
 2 gallons petrol

- 6 Mantles Petrol lamp
- 3 " " Tilly "
- 1 Vaporiser " "
- 1 Saucipan
- 1 " " brush



# University of Bristol Speleological Society

THE UNIVERSITY,  
BRISTOL 8.

CAMP RULES - remain the same except that No 6 should be deleted.

TIMBER - The Society is given permission to cut birchwood, and birchwood only, for use directly by the Society, in the wood to the north of the Society's hut.

The trees must be cut close to the ground and the brushwood properly collected and taken back to camp to be burnt.

Pine and other trees must not be cut and proper care must be taken to avoid damage to other trees when felling the birch.

The increasing scarcity of timber has made

P.T.S.

with a valuable wood for various purposes. Hence reasonable economy in the use of firewood should be exercised. The smaller and ~~smaller~~ minor trees should be selected for felling.

The Society shall confine its activities to the forest east of the ruined wall which divides the land in a roughly north-south direction to the west of the hut and to the east of the new plantation.

The Society shall not interfere with the rights of the tenants of the land nor permit the privileges granted to be abused.

NOTES - Remain the same.

Please type it on paper which can be stuck the right way up in a book of the same size.

Helped Hibbard - harvest in evening.

1<sup>st</sup> (Friday) Sept.

Some cleaning of hut, helped Hibbard with harvest. Up away to Bradford in Blagdon.

Sat. 2<sup>nd</sup>.

N.G.B. out with E.K.T. to help Hibbard. R.A.B.  
 & J.L.L. out helping Porters ~~to~~ digging T.5.  
 all back to Bristol except E.K.T. Ap out very late from plays  
 ended in Bristol.

Sun 3<sup>rd</sup>. (2)

Up late. Trat played with lamps. finally wrecked jet of  
 petrol lamp. new vaporiser (shorter than old) in Tilley.  
 Wet & windy. In afternoon went & looked at Rowharrow  
 barrow. - appears to have been dug from centre, is still  
 steep sided, it is on a slight ridge which makes  
 it appear as if it was a round barrow <sup>on top.</sup> ~~which makes~~  
 it look long barrow (centrally). It is possible that  
 there is a ditch round barrow. - Has the advantage  
 of only being 200 yds from Swan Inn.

Mr. Mr. Martin Hinton called, & also E Grundley  
 called & later the Stride Bros. whose chief mission  
 seemed to be the bearing of messages of fraternised tone

with Voltaire

from 'Simsy'.

Mon. 4<sup>th</sup> Sept. 1950 (1)

Light drizzle all morning & on till 4.0 pm. Did some trimming of trees in wood. Improved drainage of track to camp. Tidying up of tool shed. Two bad leaks at back, st. Temporarily repaired with metal sheets found one camp bed & one stretcher ruined by wet. Visited various sites on Mendips. To Bristol in evening.

SKH

Tues. 5<sup>th</sup> Sept. 1950 (1)

Morning spent on improving condition hut. Making soup extract from tea clothes. P.M. to Bristol for meeting on Proceedings. Later helped Hubbard stock corn.

SKH

Wed. 6<sup>th</sup> Sept. 1950 (1)

Left camp.

2 buckets left in Hubbards  
11.0 am SKH

Sat 9

ROB - JKP out for food. Managed not to get wet.

Sunday 10/9/50 BUC: EMH: HT & E.T. digging  
at T.S. not definite discovery.

Tea cloths unusable!! Re-laundered. M.

R.D. & A.H. down C.P.B. for geology.

Sea Scouts, & a bunch of other young lads  
down the cave. T.D. in area. Surface  
of Crutty Field like a <sup>blond</sup> potato. Batin, mol.  
R.D. did a few jobs down the hut.  
There were piles of recent snow on the  
cave walls. M.D.

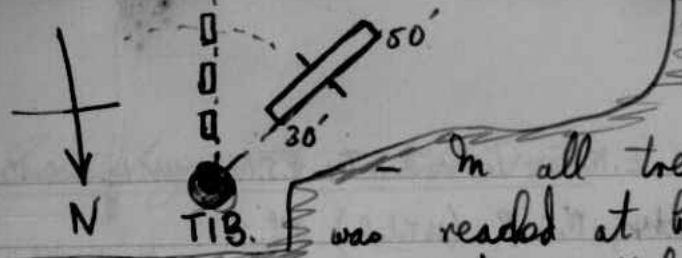
Friday 15<sup>th</sup> Sept.

Flon Pres out in a.m., Leo, John Evans & D. Parkin  
out in afternoon, argued Tynings West Barrow  
& took tools over. - boogies in Blegdon. Ap out  
late.

Sat. 16<sup>th</sup>.

Up reasonably early. All to Tynings where  
dug two sets of search trenches round  
the West Barrow in the positions suggested by  
the Megger work. (see previous records)





In all trenches undisturbed rock was reached at between one or two feet down. No sign of any ditch or of any disturbance explaining the Megger results was found. N.O. work missed during day. Treat & Ap went & looked at earthworks in neighbourhood of Longbottom camp through <sup>thorampast</sup> which someone seems to be excavating a trench, ? archaeological or agricultural.

Later Chris Court, & Peter Bird out, Porters & family out for a visit. After meal Treat on visit to ~~Winton~~ & do to Winton to see M.A.C. Hinton etc. Tom & wife out. Some to Langford & some to Rickford where failed to contact do, then to Langford. ~~Th~~ Mrs Zealy's home - very wet night (external not interior)

Sun 17<sup>th</sup>

A. Apshind

Excels in trenches at Zyngis.  
 D.T.D out, with Ap sectioned peat on top of Backdown  
 Taken on top showed following section.  
 Peat 6-9 ins. } This peat is presumably recent.  
 Sand & Clay 1 foot. } 2'  
 Sandstone }  
 P. J. Naish also out.  
 Treat returned some time. In evening spirited up & went to Leo's dinner at the Sergeant Arms.

Crooks (3) Dobson-Hintons (2) . E.K.T. Lee: D.T.D: P.J.N. W.S.L: C.C.C.  
 P. Bird, Evans, Parkin & Ap (~~W.S.L.~~, N.G.B. (16 total) think.  
 - a very satisfactory evening. Barthe & family back up to camp. <sup>a rather doubtful</sup> evening  
 D.T.D. N.G.B. & P.J.N. leave

Monday 18<sup>th</sup>

Ap. took Dave, & John Chris, home in a.m. (via Wellbourn).  
 Traitor P. Bird remaining?

Saturday 23<sup>rd</sup>

P. Bird & Chris out during day - idle, - cooked & lodged, Ap out late.

Sunday 24<sup>th</sup>

Up 11 a.m. Traitor out midday. Peter, Chris & Ap went down G.B.  
 & had a look at the East Passage which seems pretty solidly  
 choked. - Traitor took us over by car.

Back to find R.D. Stride out, - from gossiping with Young.

Ate a meal. Traitor took all except R.D.S back into Bristol.

Sat 30<sup>th</sup>

Ap out in evening, ate, remembered log & went to bed.

Sun. up late, watched rain for some hours finally departed  
 A. Ap. Smith

1.10.55

Evans, J. & G. collected some belongings from him: 17. bloody.

Saturday 7<sup>th</sup> October 1950

Geoff & Jean out by car & down G.B.  
 Bob, Frank, Dorrie, Donald & Noel out on 145 bus  
 Porthos & family out. Bob assisted Porthos at T.S.  
 Rest to Rowberrow Cavern. Geoff & Jean returned  
 to find Porthos' progeny grunting on roof of hut.  
 Jean & Dorrie prepared excellent meal - all to Rickford.  
 All to Bristol except Noel who returned to hut  
 to meet P. Bird who wasn't & didn't later.  
 Noel discovered considerable store of Beech Nuts  
 secreted in a folded blanket. -? Squirrel.

N.G. Blackwell  
 Hon Sec.

Sunday 3<sup>rd</sup> October 1950

Noel cleared quantity of rotten cheese out of  
 fat bin. If people bring cheese out why don't they  
 eat it instead of leaving it about to fester?  
 Peter out at 2pm, intending to descend Reads Cavern, and  
 ring bats. However, he could not find his rings & the  
 trip was postponed. Bob McCormick & his cousin out & taken

down Goatchurch by Noel & Peter.  
 Frank out on tour of inspection.  
 Tratty left trunk. Peter cleared roof  
 tried up hut & left at 6.30 pm.

Noel G. Blachwell  
Mon See

Saturday 14<sup>th</sup> October 1950.

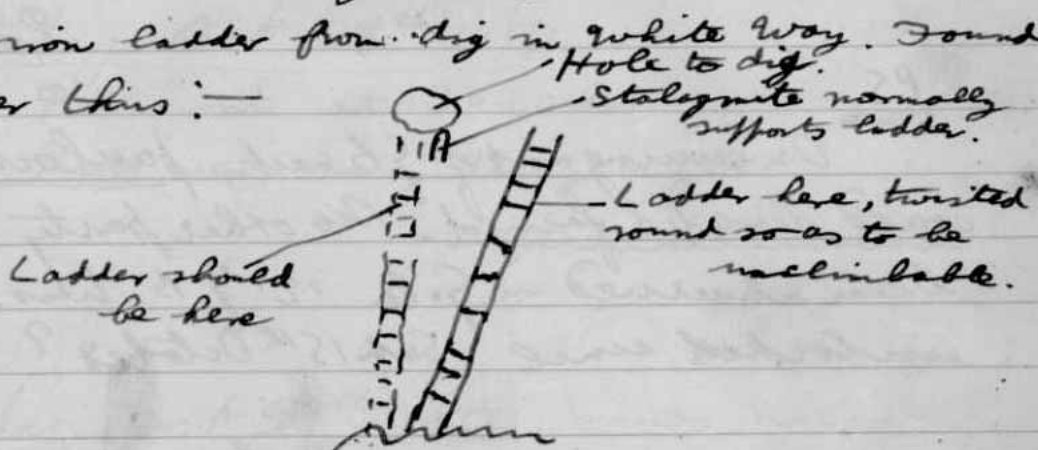
Geoff out with paraffin etc. Frank & Dorrie out.  
 also Noel Chris & John Mulvey. Later Colin Reekie Morley & Hugh  
 Noel took Colin Morley Hugh Frank & Dorrie down  
 Goatchurch & Sidcot. Most people's lights went out  
 in Sidcot, but all emerged successfully. To Richford.

Sunday 15<sup>th</sup> October 1950

Noel left for Bristol 5.15 pm.

Reekie, Bill & Peter down G.B. by long way. Used  
 rope at end of Devil's Elbow & could not retrieve it  
 from below ∴ it wedged tight in chain loop. Had

a spot of bother entering main chamber — Peter entered main chamber with dull thud, bruising chest & knee. Rikki (= Reekie) got down alright, Bill stuck. P. left R & B. with very inadequate lighting, found Chris Court & Am. N. Otter who had come down ~~the~~ short way. Confab. & attempts to get long iron ladder from dig in white way. Found ladder thus:—



Lighting poor ∴ impossible to see what is holding top of ladder — it must be either F.A. or a chain. It was <sup>not</sup> chained a fortnight ago. Foot of ladder hopelessly wedged, & 3 of us couldn't budge it; rope or many bats required. Returned to entrance to main gorge & got Bill down without ladder. Lights poor (only 1 efficient, & 2 candles) so left by short way. Devil's Elbow nice & wet, 6" standing water. Rope still in cave I end of D.'s Elbow to be collected next week-end, please

Fed, released Bill's car which had stuck in the track & left Hut about 21.30 hrs. More sycamore trees were cut in hedge during morning, gutter cleared.

### NEXT PARTY AT HUT

PLEASE GET ROPE FROM G.B.

P. Dink.

P.S.

On coming out of G.B. exit, padlock could not be found. No other party had been observed in G.B. i.e. G.B. has been unlocked since Sat. 15<sup>th</sup> October?

Rope not removed from G.B.

C. Court. (Sunday Oct. 22<sup>nd</sup>)

Saturday Oct 22<sup>nd</sup> 1950.

Geoff & Jean down Goatchurch & back to Bristol early. Tratty Noel & Joan out met Chris & Jay at Café. Tratty Noel & Joan looked at Goatchurch valley searching for a nit row hidden by waterworks debris. Further trees cut in hedge.

Rope not removed from G.B.

Sunday Oct 22<sup>nd</sup> 1950.

Cratty with Chris & Noel looking for bone cave in valley overlooking Blyden. Searched near Weaver farm but were unsuccessful.

Saturday Oct 23<sup>rd</sup> 1950

Peter out at 20.00 hrs.

Rats very noisy during night.

Sunday Oct 24<sup>th</sup> 1950.

→ Peter did. Foxes' & part of Gortchuck entrance of Sidest for bats.

Noel & J. Roush out at 3pm down Rod's pot.

Des. out 17.30 hrs, with ♀ friend.

Noel left Hut about 17.00. Rest left about 20.30.

Saturday Nov 4<sup>th</sup> 1950.

Bob Noel Donald Geoff Hugh Mosley Frank out in afternoon & down Eastwater. Did

Dolphins Pot tour. Margaret & Jim down C.B.

Key in Hut does not fit padlock in G.B. i lock appears to have been changed. W.C. & J.S.

72.

Berte & Moll. out in evening. Val & Peter out  
in evening. Eastwicks left about 23.30 hrs

Sun. 4.11.50

~~Jim, Val~~ Peter did Reed's for bats.  
Jim, Val, Margaret, Peter left 14.00 hrs.

Saturday Nov 11<sup>th</sup> 1950. Bob Noel & Joan  
out in evening went drinking with  
Bertie & Moll. Squirrels active during  
night.

Sunday Nov 12<sup>th</sup> 1950. Desmond out  
at midday also tratty. To Swildons  
tratty to Hinton. 4 hour trip down Swildons  
Water level rose while party was down cave  
& water flowed over lip of 40' pitch compelling  
the ~~climbers~~ <sup>persons</sup> of those climbing it.  
Very exhausting trip.

N.S. Blackwell

Mon Sec.



Saturday Nov 18<sup>th</sup> 1950

Owen Lake and John Mahoy out in afternoon. Very wet. To  
Richford in evening.

Sunday Nov 19<sup>th</sup> 1950

Again very wet. Replenished wood supply in between shores.  
Chris Cook out in afternoon. All left ~ 8.00 pm.

*WCH*

Monday Nov. 20<sup>th</sup> 1950.

John Mahoy discovered Bath - Weston bus service  
ceased. Spent night in hut, left 9.30 am.

*J.H. Mahoy*

Sat 25<sup>th</sup>

Bob Bent in evening joined by Bertie &  
Mol - went. Shipham.

Sun 26<sup>th</sup>

Left for G.B. 1.00 met Noel outside  
G.B. Bob Noel + later Bertie assisted in removing  
equipment from cave.

Will members please REMEMBER TO  
leave HUT DUES in the Tin Provided.

Saturday 9<sup>th</sup> Dec 1950

Johnny & Bert Noel & Joan out on 1.45 Key out later.

Saturday 10<sup>th</sup> Dec 1950

Rained. Bertie & Mollie out, all left at 7pm.

Pitts farted all day.

S. Blackwell.

Hon Sec.

Saturday 16<sup>th</sup> Dec 1950

Geoff Jan Frank Dorrie & Morley out. Ron Sandy & Noel out via café. Ron & Morley down Roll's Pot from 5.30 to 9.15. Bert to Richford Geoff Jan Frank & Dorrie back to Bristol.

SUNDAY 17<sup>th</sup>

Roll, Ron, Sandy to Bristol by car 3.30 pm

Morley stayed on by himself. 6.0 pm:

The Devonish of Bridgy and it Wessex types from Wells got their jeep in a bog near Rod's Pot. 8.30 pm jeep dug out. All to Richford

MONDAY 18<sup>th</sup> Dec 1950

Penryn to Bristol by bus about 3.30 pm  
(no watch)

Mr Hunt

~~Thurs.~~ Fri. Dec. 22<sup>nd</sup> 1950

SKratman out - odd jobs at hat. Repair  
of rabbit fencing. SKM

Sat. Dec. 23<sup>rd</sup> 1950

Kay Dixon, Bob Rendall, Johnny Pitts  
& Trats.  
Cut firewood. Hedge trimming SKM

Sun. Dec. 24<sup>th</sup> 1950.

Party ~~two~~ three to Rhino Rift. Placed &  
fired charge.

Party two to place near Fox's Hole. Cleared out  
stones thrown in & got good working face - 40  
buckets removed. Boulder obstructing further  
progress. SKM

Mon. Dec. 25 1950. Christmas day, 3<sup>1/2</sup> in

camp. Some beer drunk.

9.24. PP. J.K.P.  
RAIS  
KD.

Dec. 26 1950

4 in camp. Visit to place near Fox's Hole. Laid charge against boulder + exploded charge. A satisfactory bang  
E.M.P.

26/12/50 Recovered purloined asbestos sheeting. Cleared down water catchment + re-assembled.

27/12/50 (4)

(1) To Rhino Rift to see effect of charge. Block demolished. Passage dwindles to very narrow rift in solid rock + driftstone floor. Near Passage 6' high but too narrow. No more boulder choke.

(2) To place near Fox's Hole. Removed 35 buckets debris exposed broken end of same boulder as on 26/12/50 - placed another charge + fired. Result sounded good.  
E.M.P.

27/12/50

T.A.V. Brooks + R. Macbeth to  
G.B. cave - part done of cave only.  
MM

28/12/50

T.A.V.B. + R.M. to G.B. cave 2<sup>nd</sup> trip.  
Repairs to lumps MM



29/12/50 (1)

1. Visit to cave near Fox's Hole. Result of  
blast good. No sign of remnants of boulder in  
sat situ. Removed loose stone & built up  
step in passage. About 50 buckets of earth  
remain loose to be removed. Passage tends  
change shape slightly towards bedding plane.  
shape + moving to left. & is 4 feet wide.  
MM

2. (15) To dinner at Seymour Arms Blagdon.  
Aphimion + Trahan return to camp. MM Trahan

30/12/50 ~~(1)~~ (2)

To Rift near Fox's Hole. Removed 40 buckets  
Deepened pit ready to go forward on next party.  
Face is now 4 ft high. Slightly more gravelly

material at base of section on left side. Change of form from  to  continues.

Deviation to left not confirmed.

Day turned in wet with some sleet.

MS

31/12/50 (2)

To Trats Rift. Removed 40 buckets of fill. Rift still continues wide. Left two buckets at bottom of pit.

Next working party should rig a wire rope way. MS

DTD, Hon. Sec. + 2 afs. to Bannell Bone Cave. Saw Mrs. Neal who has no objection to our digging. Found traces of digging (? for extension of cave) by unknown bods. Their tools left around.

Dug a little in contaminated surface layers of deposit. a few bones removed.

DTD.

Bob & friend, Jimmy Rankes, Roddy, Beattie & Mat, Arthur Stone, Lee  
Op. water, <sup>Beard, Dap, N.G.B.</sup> Sect for Newmans zone 'Piss up'. Evening in

3 stages - hut - Shipton - hut, as usual. A fairly  
 3rd evening. Acc. noted by 2. 11/28

Sat 6<sup>th</sup> Jan 1951

Bob & Joan out by 10.45 via Cafe.  
 Got wood in B found a bottle of gin  
 overlooked from N.Y.E.  
 Got pissed. Just as things  
 got interesting Peter Bivort  
 arrived so had to desert  
 and go down G.B. Savel again!  
 Went round all the digs collecting  
 tools. The young river flowing  
 down gorge.  
 The ladder up to the East Passage  
 is completely finished and  
 wedged solid. It will need  
 dismantling in order to remove  
 it from its present useless  
 position. Curse the syphilitic  
 museum pet ant responsible.  
 Why the bloody hell don't people leave things alone.

Pete Bird found long Eared  
Bats in Quatchuck  
Bertie & Moll not out  
— curse them. Too late  
to go to Pub. so stayed in  
and drank gin.

Sun. 7<sup>th</sup> D.T.D., Val., Bertie & Moll arrived  
at 3.0 PM. Bertie & Moll left again—  
social visit. P. Bird examined.  
Reads for bats — banded 45 bats.

D.T.D. + Val. to Bannell. Day boxes.  
Mantle fitted to Tilley lamp. by Bertie was  
not securely fitted + gave way under strain.  
Bob + Joan left on 5.45 bus.

Des + we back to Hut.

D. V. + P. all left 19.10 hrs. ~~P. Bird~~

Sat., 13.1.51 P. Bird out, arriving Hut about  
~~14.45~~ 14.45 hrs. Ditched paraffin from village.  
Found that rats have gnawed potatoes left in  
the old tin trunk. Burnt pots. + slung out  
trunk — it's lidless + useless. Intermittent



Lamp glass cracked in use.

rain. no arrivals. No work done.

Sun. 14.1.51 Rats noisy last night, as usual. Cleared gutter & washing-water catchment. Put bucketful of <sup>finely</sup> broken glass under hut & down obvious rat-holes in floor. Intermittent rain. Washed 2 of the many shovels left dirty by other persons. I have left a 13-ft. pole on roof of hut, marked with a bit of wire; please don't destroy it ∴ it's needed for "bat work".

Percy, John Standing, Jim, Margaret, Val., & I arrived in Hon. Treasurer's new car at 3.30 PM. To Banwell, worked for a couple of hours. Doves collected in situ & from debris on top of deposit. Descended the shaft - about 25' deep, choked with boulders at bottom.

Peter Bird ringed bats in Bone & Stalactite caves.

Returned to hut for stew with onions but no potatoes.

Friday 19<sup>th</sup>

RAB out 11.00 pm via Bridgewater.  
Saw Mr Humphrey's film of G.B. - it shows promise but a lot more needs doing.  
Burnt what fuel there was in a belated attempt to dig bedding. Dry bedding is appreciated but why the hell not leave something to burn with it.

Sat. 20<sup>th</sup>

F.A. today - Shipham in evening.  
Peter batting in Reads. 61 Bats.

Sun 21<sup>st</sup>. Tratty shooting in the night!

Mr Humphrey arrived 10.00 rapidly transported three members <sup>+ Tratty</sup> to G.B. To gorge to collect Tilly and cable - to Grotto - neither Tilly would work properly - abandoned idea of taking film but planned out future action. Back by 2.00 pm.  
Peter & Colin to Cheddar in the Sinc Palace.

Looked down White Spot & batted in Great Domes failed to find Long Hole. 14 Bats.  
Left 8.25.

28.1.51 Sun. Peter out about 14.00; Des,  
John, Margaret & Margaret's man out about 15.00.  
all to Bonwell. Bones dug & bats ringed.  
Left hut ~~about~~ 21.00. P. Bird.

4.2.51 Sun. Peter out 13.45. Left at 16.45.  
P. Bird.

Sat 10<sup>th</sup>

RAB out sorting tools & equipment.

Sat. 17 Feb. 1951

Peter Bird & MWT out in evening. joined  
temporarily by Bertie, Molly & Langford.

An extremely wet night - very heavy rain  
& sleet.

Sun. 18 Feb. 1951

P.B. Bathing in Aveline's, Fox's Hole  
& Goutchurch - very <sup>few</sup> bats but included one  
"refind"

MWT Hedging; planted 19 trees as screen  
for bath & 12 in ledge MWT

Sat. 24.2.51 Pats out ~~at~~ 22.30 hrs.


Sun 25.2.51 Johnny Jfold (BEC)  
arrived Hut 11.00. P.Y.J. to Cheddar.  
met Colin Peckie & dit ~~just~~ on  
Old Gough's - found ~~col.~~ cluster  
of ~~just~~ 120 Greater Horseshoe Bats,  
also a few Lesser. J.T.C. had  
hasty look round Long Holes, &  
saw cluster of bats there. Jimmy  
(a Zesler) arrived too late to do anything.  
Colin & Peter back to Hut. Left  
Hut about 20.30.

Sat 3<sup>rd</sup> <sup>March</sup>

R.A.B. & P.B. out lab

Sun 4

P.B. to Cheddar mixed 10 bats  
R.A.B. to GBurd thin pharynx 200 ft film.  
D.T.D. to Banwell.

1 pair of Banwell have earth left  
washing at the Bath. 

Sat 10

RAB &amp; MB &amp; L collecting clothes

Saturday 17<sup>th</sup> March.

Morley, Bob and Frank out by 12.00.  
Spent afternoon down Goatchurch. Geoff arrived  
later. All to Rickford in evening. Morley and Ron  
staying the night. Frank Glockling.

Sunday 18<sup>th</sup> March

Prof. Inakman arrived from London  
overnight. Inakman and Morley to upper  
parts of Swildon in morning. Bone dry except  
for about 2ft of water. All to Basset 4.0 pm  
(~~4~~<sup>7/16</sup> in box) Stratford.

Mon. 19 Mar. (1)

Saw Mr Read (Sir John Wills' agent). Marked  
line of division between U.B.S.S. land & that of E.K.  
Inakman. It is part of the agreement insisted  
upon by Sir John Wills for the protection of the  
U.B.S.S. that a fence be erected on the line

of division. The direct cut to the bath is to be closed. Comment was made on cutting down of sycamore but explanation of hedge laying accepted & approved. Mr. Read in agreement with proposal to lay rest of hedge & was pleased some interest was being taken.

Evening to Bristol for Presidential address & return night.

R. W. Stratman

Mar 20<sup>th</sup> (1)

Various odd jobs about camp.

R. W. Stratman

Mar. 21 (Wed) (1)

Preparing for Easter camp.

Mr. D. Price, & D. W. Pullen arrived from U.C.H. (Dental School) evening.

R. W. Stratman

Mar. 22 (Thur) (3)

a.m. Tour of Goatchurch.

Intrana is greatly befouled by picnic rubbish.

Considerable stream in water chamber but

No ~~STRA~~ SOUND OF STREAM BEYOND TUNNEL.

A fluorescence <sup>air</sup> test is wanted  
 11.33 1/2 (rickmay blew in after knocking on door.)

Mar. 23 (Fri) (3)

Price, Pullen & Trotman to Swildons Upper & Middle Dry Ways. Middle Dry Way a small stream in lower parts. Upper Dry Way a stream till turn off to right.

Wet way very wet. (rickmay - cook.)  
 MKT

Mar. 24 (Sat) (4)

Price, Pullen, Erickmay & Trotman walk to Cheddar. Visited Gough's caves - no more amber found. Digging seems to have stopped for season. Several parties down G.B.

Visited "Penrose" <sup>double!</sup> got bed upstairs. Blew  
 stoppage out of Traps Pipe, and detained photo of Concomitant  
~~for photograph~~. Owe Bertie 2/6 on bet.  
 MKT

Sun. Mar. 25 (4)

Three down G.B. <sup>with guest 2,</sup> h cave infested i scots and others.  
 Parties are using rope left at descent into Boulder Chamber. Short way small trickle of water in it.  
 Rest of cave very wet. MKT

Mar. 26 1951 (6)

Visit to Banwell Bone Cave. Failed to make contact with Mrs. Hinton & Prof. Palmer.

Met Rev. Brimson of Abridge Cave Club Group.

Discussed joint work.

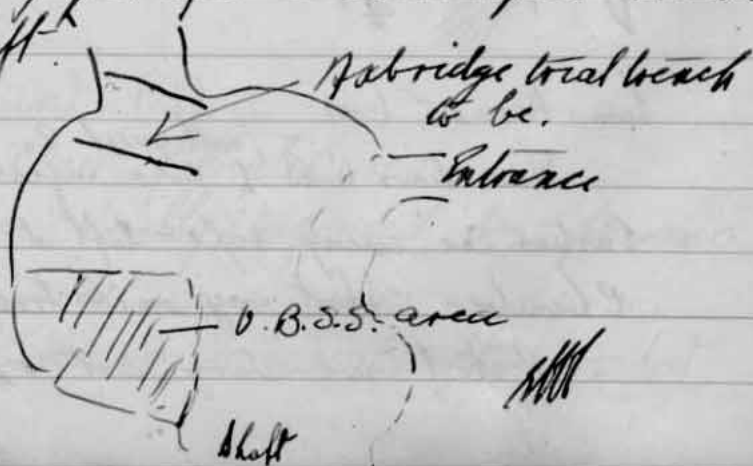
A.C.G. will dig trial trench to rock floor (!) in flat area opposite entrance

O.B.S.S. to continue on shaft site.

Removed about 2 tons of recent material "recently" placed by slide from Beard's old spoil.

Exposed what is thought to be undisturbed material. Area about 6 x 4 x 3 ft cleared. <sup>to that level</sup> Still very loose disturbed deposit against cave wall.

Bulston found in "recent" material. Many bones also. Below a sterile layer containing many sharp angular limestone fragments? derived from quarrying operations in cave. Spoil thrown down shaft.





Mar 27-31 (1)

Crickmay in camp. Surveying  
Burrington Combe

Mar 31

Crickmay + Trotman preparing  
Presidential Residence. Donovan +  
Blackwell + Nash + Zeely came to  
tea. - Peter Bird out later. Bertie + Kelly too.

Apr. 1<sup>st</sup>

Crickmay, Trotman + Bird collecting  
Bannerds from survey. Heavy rain  
One survey pole left on Burrington Ham  
To be collected later.

Trot's rift has at least 4' water in it.  
Buckets submerged.

*M. Trotman*

N.B. Soc's Level, Tripod + Staff, Crickmay's  
Plane Table, tripod + Indian Clinometer,  
Bubble + 100' tape stored at Penrose.

7 Mar. EKT recovered 1 survey pole,  
replanted trees above bath. Noticed  
that ill-disposed persons have put

some rocks in bath. cleaned  
drains to improve track.

8.4.51 ~~8.51~~ EAT, DTD & Hon. Sec. aw.  
about noon.

Fetched 2 beds of lubricious  
utility, plus some timber, for  
Mentif gate base.

P. Bird and 3 persons arrived  
at 3.15. Off to GB base. Peter  
overcame by modesty and changed  
in the toilet shed. C.B. party returned  
18.30 hrs. Changed (in less modest  
style) fed & fled. P. Bird.

14.4.51  
~~14.4.51~~ 14.4.51. Tralman, Crickmay, D.T.D, & V.B out  
about noon. Set out in hopeful mood  
to dig "Butter's lost cave" incombe directly  
below Toad's Hole. J. Saunders & M. Christy out  
later. After digging a 6" ft. trench came to  
regrettable conclusion that no further

progress in that particular direction was possible.  
 There is still hope to the right & left however!  
 P. Bird out ca 7.30 p.m. when all work had  
 ceased. F. B.A. Watch (1st. visit for 23 yrs.) later visited  
 camp & Pennine Cottage. V.B.

15<sup>th</sup> ~~Nov~~ 4.51 Val & Des returned to Bristol.

Trot., Crick., Peter, J. Saunders, Margaret C.,  
 completed for yesterday's dig — found it  
 a wash-out. Partly filled it in.  
 Inspected vertical pipe in quarry  
 behind Mendip Gate Cafe. Appears  
 worth a blow. Some but chases done.  
 Left circa 17.50. P. Bird

21.4.51 Brian from Marlboro' coll., Betty &  
 John Dyer, Ruth Walker, Peter Bird, John  
 A.B. for hrs. in afternoon; used but  
 for changing only. Removed iron ladder  
 from 1<sup>st</sup> Grotto & took it to ~~the~~ the  
 Gorge, but didn't need it when I  
 thought one would — left it at  
 bottom of the lowest pitch in the  
 Mud Passage. Went to Bomber's Chamber.

in order to ~~then~~ remove aged rope  
 from bottom of Devil Elbow.  
 No rope to be seen from ~~to~~ below  
 ∴ it has either been removed or  
 is just coiled up @ the top of the  
 pitch. Only inspection from  
 above will determine which.  
 Lit magnesium flares & inspected  
 formations in Bridge, White Way  
 area. 3 hours in cave. Left  
 Hut about 9 P.M. P. Disk.

Sunday 22-4-51. DTD. & V.B. arrived  
 ca 3:30 p.m. Met Perthes - discussed &  
 photographed burrow. Later did some  
 geological mapping round Rock of Ages etc.  
 After good tea, left.

V.B.

Saturday, 28-4-51. D.T.D & V.B. out by 12.30.  
~~But~~ E.K.T. arrived later, followed by Perithos.  
 Removed majority of Perithos' spider trap from one  
 site on the barrow to another. Cleaned the  
 treasurer's car & washed cave earth. J. Saunders  
 & M. Christy out by 8.0 p.m. Spent evening  
~~at~~ at Rickford, being temporarily entertained by  
 Bertie & Molly. J.T.D. departed for Bustop at 10.0 p.m.  
 June & Tom Zealley staying at Mendip Gate Cafe.

Sunday 29-4-51. E.K.T., V.B., J.S. & M.C. inspected  
 Sun Hole in Cheddar, later visited entrances of  
 all caves in district. After dinner, with T.S.Z  
 & June, blew hole in Milliers quarry, enlarging  
 the entrance to a considerable drop. Covered  
 entrance with metal sleepers. Perithos levelling on  
 his barrow. Left ca 5.30 p.m.

V.B.  
 Hon. Sec.

Saturday, May 5<sup>th</sup>. V.B. out by 11.0 p.m. Rats noisy.

Sunday 6<sup>th</sup> May. Cleaned primus stoves, lamps etc.  
 Washed tea cloths & towels.

You wouldn't believe it!

94.

Desmond arrived about 3:0 P.M. Went straight down to Presidential dig in William's Quarry. Made slow progress at enlarging hole by manual methods. Returned to hut for more weapons. After several unsuccessful attempts at entry by V.B. & self we finally got in at about 8:0 P.M. after 4 hours hard & awkward work.

The hole is an enlargement of a N-S joint in the limestone, and descends at a very steep angle (with lip of rocks) for 50', at which depth it is blocked by very loose rocks - largely those sent down during the opening of operations.

The entrance at present is bloody tight. A ladder is useful to provide footholds, and 2 strong men are also able up top to haul one out again, as there is no room to ~~be~~ move <sup>arms</sup> & one must be held up, the other down.

S. Donovan

Friday May 11<sup>th</sup> Breakfast at 6:30 PM. to  
Rickford.

Sat May 12<sup>th</sup> cut the bracken fronds & thinned  
out the stinging nettles. Bob, F.K.T. & secretary  
to Arkbridge to discuss G.B. with the R.D.C. Later, Peter,  
J. Pitts, Kay Dixon <sup>+ Sister</sup> & Diddy, T.S.Z. and June all out.  
Cuckoo Bob & Diddy levelled in Combe. Peter & V.B.  
did fluorescein test in goatbunch - the stream flowing  
down the valley connects with the stream in the water-  
chamber. No moving water beyond the Drain Pipe, Bartie  
& Molly out in evening. Then to Rickford.

Sunday, May 13<sup>th</sup>. Treat + infinite number of Boy  
Scouts went down Raids and came out with half  
a guinea stone. Cuck, T.S.Z, June & Val levelled  
in Combe. Bob, Kay + friends down G.B. Peter &  
Chris digging in Peter's hole. D.T.D. out later &  
Thrust Tom down Mellian's quarry hole. Thence to  
Rickford & eventually back to the Rect by a  
curiously short cut involving the Combe, Tyrings farm  
and Blackdown - occupants of the Land Rover  
somewhat shaken.

96.

Monday May 14<sup>m</sup> Peter back to Bristol. Guck, Bob Kay & Chris levelling in Combe. Desmond occasionally doing some geological mapping & Trat going round in circles on the tractor at Hibbarts. Later inspected potential rock shelter in Combe above Huelines & ascertained that the wheelbarrow was still in the trench at Buntington Camp. Completed levelling of Combe. Error between West Twin and Lower Ellick farm 0.53 feet.

Heights of BMS:-

NBM 1	410.6	Between the Twins. (Twin?)
NBM 2	466.6	opposite East Twin. (Dug)
NBM 3	506.1	Between Trats & Fox's Hole.
NBM 4	527.8	at entrance to Trats' Crack.
NBM 5	567.9	up the combe.
NBM 6	607.6	Further up the combe. <span style="float: right;">fc</span>

Cork to Weston.

Tuesday up at the usual time. Cork returned at 10 AM. (warm out) fixed several additional points in the Combe by plane table.



19 May 57 From Light & DTD out at 11.30 having  
 missed Bendall at Temple Woods as arranged  
 for trip to Bhiddar. Too late to go to  
 Bhiddar as Party of Battersea old naturalists  
 had to be conducted round. These arrived  
 at 12.30 led by Col. Boekshott and also  
 accompanied by Mrs. Clifford. 30 other more or  
 less halt, lame & blind members. Showed them  
 T5 & sundry caves.

To Gough's Caves at 5.0. Prospected for  
 survey and went some way along the new passage  
 (not new) at end.

SD

Saturday May 26<sup>th</sup>. Val and Tral arrived at  
 camp by 2.30 p.m. Bertie and Molly arrived  
 at 3.0 p.m. Tral, Bertie and Val down Read's  
 Cavern to dig in a sand-choked passage near  
 the entrance. Removed large quantities of sand &  
 boulders from a promising-looking rift in solid  
 rock, from which Val & Bertie imagined a <sup>draught</sup> ~~light~~  
 to be coming. After a reasonable stave, evoked by  
 Molly, departed with J. Saunders & M. Christy to  
 Shipham.

Sunday, May 27<sup>th</sup> E.K.T. and V.B. cleaned bath and replaced some of the tynon he side (removed during the week by some — scouts). Later down to Roads' dig & made some rather slow progress. Later tidied tool-shed & prepared up roof. J.S. and M.C. cleaned hut. Fed & left at 4 a.p.m.

V.B.

Saturday 2nd June. E.K.T., Cuckoo & V.B. out by dinner-time. M. Shifty out later. Cleaned Tilley lamps in afternoon and after tea with Molly & Mayorie. E.K.T., V.B. & M.C. took Tilley lamps down G.B. in anticipation of the visit by A.R.D.C. next week. (Bridgewater & Warrax people also in G.B.) To Rickford by 9.30 p.m.

Sunday 3/6/51. Aick down to Combe. E.K.T. & V.B. & M.C. blew (1 stick gelignite!) in the dig in Roads. D.T.D. out in afternoon. E.K.T. reworked tap.

V.B.

H.R. 5/51

Monday. Work in camp. visit to Bath & Timblumy.

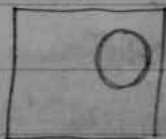
Tuesday Bland channel for stream across marshy area where houses cross. This should improve the quality and quantity of the Bath water.

Wednesday to Bristol. visited Spelio Room St Mary Redcliffe etc

Thursday Wells Cathedral

Friday Worlebury Camp. much clearing has taken place. Trees have been felled around the Eastern Ramparts, which are now fully exposed. At least a dozen of the pits appear to have been recently dug. They are approx. 6 ft square & 6 ft deep, with a wedge shaped base, probably due to the dip of the limestone

One pit appeared to have been altered at a later date. A circular, <sup>2 foot</sup> pit has been constructed inside the square one. Two or three courses of this later masonry are still intact. jc



Sat June 9<sup>th</sup> 2.30 PM Took representations of Axbridge R.D.C. down G.B. Party consisting of Trat, Val, Desmond, Bob, Bertie, Cick, Margaret Joan, and five members of the A.R.D.C. All passages except Ooze, Loop & Long Way inspected. Ladder to East passage re-erected. Removed knotted rope from ~~40 ft~~ <sup>Boulder Chamber</sup> pitch. Left two large Tulleys in Gorge. After stew cooked by B. Dembs went to Rickford.

Sun. June 10<sup>th</sup>. Cick, Bob, Joan & Margaret surveyed from West Tower to Trats Crack. Trats, Frank Glockling + 3 others down to bottom of Swildons - reported it to be wet! After stew to Rickford. Cick & Val left in camp.

Monday June 11<sup>th</sup>. Invaded at 4.0 a.m. by U. of B. Explorers in search of water during their "All-night hike". Trat & Cick to Cheddar to see National Trust about Six Hole. Val down Roads - last weeks blow eminently successful. Removed several large

boulders leaving a hole large enough to work in. Left at ca 5.0 p.m.

V.B.  
Hon. Sec

Thursday 14<sup>th</sup> June '51. F. Glockling, V.B.,  
M. Hunt, J. Chadderton, I. Dunstan, H. Attree,  
B. Gilbert, B. Harbourn, T. C. Reekie & J. Parry  
out at 12.0. After dinner down G.B.  
N.B. G.B. is now locked and the Key is  
hanging in the hut - Young has the other  
Key at Lower Farm.

Back in hut by 5.0 p.m. P. Bird out  
by 3.0 p.m. Left for Rickford at about 19.30.  
Commivial evening - Hon. Sec. quite at her  
best. all ~~as~~ aft for Bristol except  
Peter Bird.

15.6.51. Cleared gutter & cleaned out  
stinking grease trap. Washed cloths.  
visitor turned up at about 15.00 - viz  
'Fish' Pollard - 1<sup>st</sup> visit after 20 yrs.  
Dried great quantity of boots & carrying  
clothes left very wet by yesterday's  
C.B. party. Tasted new drink -

"Café à l'Orange Sucré" — a noble brew. I hereby offer to prepare same for any other member(s), on payment of a (not too) small fee. Bought coffee & cereals. Took some shattering over to dig nr. Goutchuck. Lower Twin Brook is dry, despite yesterday's rain. Put in more shattering. Broke up large toulder with the sledge. The toulder looked as if it were buttressing ~~the~~ much of the great overhang, but no collapse ensued & working space much enlarged. Removed 4 buckets-full from bottom of dig — hard labour even with new tool (large handle on long handle). Principle of tool O.K. but it needs to be 12 or 14 cm. diameter i.e. larger. To bed at 20:00.

18.6.51. up at 4.15 (sic) Peter removed surplus mud from hut wall at tool-shed end. M. Christy and V.B. out by 1:30 p.m.

Peter, Margaret and Val took six of the University Technical Staff down G.B. The cave was full of people, none of which had applied for permission to enter - i.e. B.E.C. surveying in order to complete their 3-dimensional model (Bob ~~was~~ had given them permission\*) and Arxbridge Caving Group who were laying an electric cable to light the cave for the A.R.D.C. surveyors who are visiting the cave on 20-6-51 to ascertain the safeness (or otherwise) of the roof. Arxbridge Caving Group reported that they had found a skeleton of a bird on a ledge in Banwell Bone Cave and also that their dig in that cave has progressed to a depth of ca 30 ft.

J. Saunders found 4 Thumb scrapers, 1 arrow-head & 1 knife - all probably bronze-age flints on Mandip Forest site opposite Reads.

Geoff and Jean blues in for a cup of tea and later all departed to Rickford.

Bob Bendall out by 11:30 p.m.

\* He also apparently gave them permission to use the two large Tilley lamps.

164

17<sup>th</sup>

Sunday (19<sup>th</sup>) June '51. Up usual time. Peter  
Margaret & Jim went to dig in  
Peter's hole. Bob, Joan & Desmond  
to survey in Gough's Cave, Val nailed  
up but when it was falling to pieces  
& did other odd jobs. Val left for  
17.45 bus. Margaret & Jim left ~~at~~

~~at~~ about 19.00. Joan & Bob returned  
about 20.05 & left 15 mins. later. Peter  
spent rest of evening on social call to  
a neighbour of Trats. Was given an  
idea as to the villagers' opinions re.  
the "gongises-on" at Copcat (i.e. the  
Tratmanorium). Most humorous.

20.6.51 ~~at~~ Left for 11.45 bus.

P.B.

1<sup>st</sup>

Monday (18<sup>th</sup>) June 1951 — Merley & Front out  
about 6.0 P.M.

The chronology of this record is open  
to question! — Gene accompanied by  
John and Dan Brown arrived at last  
evening of Thursday 19<sup>th</sup> to find  
occupants settling out for Bristol. Went with



ham. Bed by midnight after visiting Seymour and  
 Adelaide and had by phone yet again. Prepared to  
 leave 10 +. am. 6/2.

Tuesday 19<sup>th</sup> 1951

Merley & Frank dug Trats  
 Stinking Shit Hole in afternoon. Got  
 nowhere, but found good bucket which  
 we took back to hut.

Dave Brown, John Antony & Percy  
 Naish and Geof Coates out in evening.  
 Pubs crawled over Mendips. All stayed the night.  
Wednesday 20<sup>th</sup> June.

Dave Merley & Frank inspected  
 Radded in air raid shelter on Blackdown  
 with a view to swiping same. Failed to  
 shift base even with sledgehammer & chisel.  
 Requires spanner to undo nuts at top and  
<sup>back</sup> saw for bottom. Merley & Frank, setting  
 out for GB found their life cap lamps 4/5  
 & amused themselves with soldering iron and  
 pliers for remainder of afternoon. Road out with  
 Heather. All to Rickford. Merley & Frank  
 to bed in the early hours.

Thursday 21<sup>st</sup> June

Thanks to Bristol on 11.45<sup>AM</sup> bus.

Morley stayed on by himself after a visit (of course) to Rickford.

22.6.51

14.30

Peter out ~~2.30~~. Morley + Peter dug at the dig nr. Goatchurch. Moved much earth. Rickford in evening.

23.6.51

Joan out about 11.00. Bob out about 14.30. Bob + Joan to Cruffy's Field + dug a hole in clay in Sallet 13. There was about 2 ft. topsoil + 3 ft. of clay. Morley + Peter dug a dig nr. Goatchurch. Got iron rod into the rabbit-hole i.e. we are nearly down to the rift. Noel out about 19.00. Noel + Morley tried to establish contact, by shouting + burning paper, between the dig + Goatchurch (bottom of coal-chute). Result negative. Bertha + Mollie out + all to miners' clubs. P. D.

24-6-51.

UGB JIL R&B digging in SXIII Gruffy Field.  
Hole now 6'4" x 5 1/2' deep. No sign of rock yet,  
very heavy clay.

Johnny Mash + a few friends down foalchwell  
listening to Peter Bird in the Water  
Chamber.

Left 6:30 p.m. Porthos out in afternoon  
Peter & Masley digging in Peter's crack.

Moved a large boulder + enlarged working space  
~~in~~ the rift itself with the sledge, + excavated  
floor of rift (got down 9" & removed end of 2 ft  
at wide end). Same type of filling at bottom of  
the dig as at top ∴ to get rift open again - as  
it was last summer - may require several  
days' work ∴ I suggest abandoning the dig.  
Impossible now to work under the large  
leaning boulder as space too restricted -  
we brought said boulder down about 1 1/2  
meters today, as it had become too  
unsafe during the night. Suggest  
that every effort be made to keep stream

out of the dig, ~~the~~ because it will  
 choke the dig again & we may later  
 desire to reopen the dig. Donald Thompson  
 & Somebody Sellers turned up at the  
 Hut, having done Rod's <sup>only</sup> Morley & Peter  
 stayed overnight. P.B.

25-6-51

Morley and Peter down Read's  
 Cavern

Peter to Bristol 4 40 P.M.

26-6-51

Morley to Bristol about midday  
 (~~Morley over Kelly 3 1/2 (ie 2/2 Morley 4 1/2 (ie 2 1/2))~~)

AMH

28-6-51 (Thursday) V.B. out by 11.0 p.m.

29-6-51 Caught 9.40 bus to Axbridge, and went to A.R.D.C. meeting:- G.B. is to be closed for a fortnight only and from then on we have permission to go down, provided that we guarantee that no-one else will be allowed to enter the cave. A strong door is being erected at the entrance & the U.B.S.S. will be given a key.

In afternoon collected some food from Buntington & cleaned lamps which were left empty & v. dirty. About 4-5 lamp glasses have mysteriously disappeared during the last fortnight.

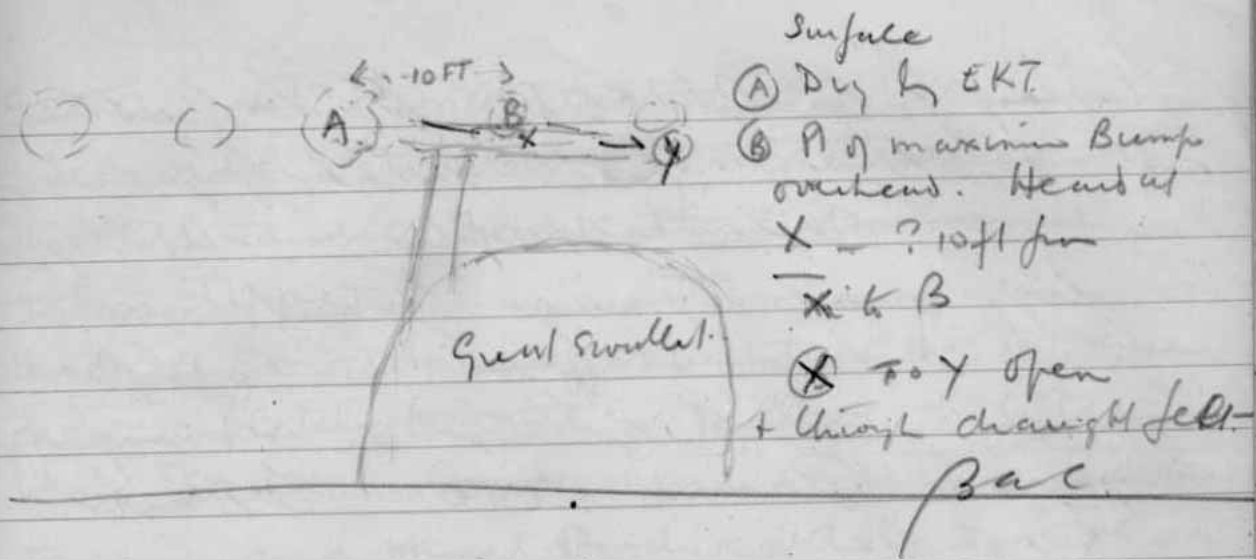
George Boon wandered in from Charterhouse for supper and departed ca 9.0 p.m.

30-6-51 - Saturday E.K.T. & Hon. Sec. inspected G.B. Entrance in morning. M. Christy out in afternoon. V.B. & M.C. mended ~~tent~~ ball tent - replacing all old rope and mending runners. In evening E.K.T. & V.B. retrieved rope which had been lost during the last trip down Suedons. M.C. back to Bristol ca 8.0 p.m.

Sunday 1-7-51. E.K.T. & V.B. inspected Scouts  
Camp by Roads & the water-supply. Cut down  
bracken & Thistles round Tull. J. Mulvey out in  
afternoon. Left by 6.30 p.m.

Saturday 7-7-51 R.A.B., J. Light, N.G.B., Porthos,  
E.K.T. & V.B. out. Bob, Noel & Joan continued  
their dig in Swallet 13' - 7' ft hole but still  
no limestone. E.K.T. & V.B. inspected Tynings  
Great Swallet & started to dig in mineshaft  
directly above it. A strong draught was  
blowing from the rift at the end of the entrance  
passage. After supper returned to Rickford with  
Bertie & Molly via Penrose.

Sunday 8-7-51. Bob, Joan, Noel & Des to  
Cheddar to survey Goughs. F. Glockling, Denny  
& Ron (?) to Upper part of Swildons. E.K.T.  
V.B., Bertie & Molly inspected Great Swallet  
with result indicated on opposite page.  
~~V.B.~~ V.B. & E.K.T. to London 5 PM ✓ V.B.  
E.K.T. wearing chivalry belt.



Sat. 14 July.

a.m. ~~at~~ on camp chores. Palmer arrives.

5.30 Kingswood School (Bath) party<sup>(s)</sup> arrived. Down-Read's for tour.

Sun. July 15

10.30 am party eight to tour upper part of Swildon's. Both dry ways + part of wet was done.

closed camp 6.30 pm ~~at~~

The undersigned, from Kingswood School, wish to thank the Spelco's for an unforgettable weekend:

J.W. Gardner R. Capewell J.G. Smith  
S. Clutterbuck J.S.B. Adcox.

Bladey

Saturday July 21st 1951. No breakfast  
 out for 10 hrs later Frank Geoff McDonald  
 Ron with Bertie & Mollie & Tristram  
 A dig near Typings Great Swallet  
 returned to hut at 8pm to Richford  
 Sunday Noel attempted unsuccessfully  
 to repair Primus stove & burnt  
 on fire.

~~Blah~~

Sat. July 28 1951. Porthos, Bob Bendall, Joan light  
 digging at T.5.  
 Evening B.A.C., Molly & Bob to  
 Typings Gt. Swallet. Further digging.

Sun. July 29 1951.  
 Bob & Joan on reconstruction work  
 in hut.

Evening same party to as 28/7 to  
 Typings Gt. Swallet. Bob  
 Constructed two double beds - Valerie keep  
 off - they squeak! and creak!



Sat Aug 4<sup>th</sup> Buck arrived 5:30 PM.  
 followed by Peter Bird, Jerry Counsell  
 Tom Alexander, Frank Alexander, and  
 Chris Tippet.

Sunday Aug 5<sup>th</sup> abortive effort to enter GB. Entrance  
 now completely covered by pillbox with steel  
 door, and two locks 1 pad + 1 notice. Returned  
 to camp and phoned Body of Axbridge, who  
 states that the keys are with the ARDC  
 at their H.Q. and although he could get  
 hold of them he does not feel justified without  
 authority from the Committee. A joint  
 meeting of ARDC and UBSS is suggested at  
 an early date to discuss the handing over  
 of a set of keys to the UBSS for their  
 exclusive use. In other words GB is closed  
until the end of August as far as we are  
concerned.

Descended Sidcot, but could not manage  
 the tight squeeze at end. Much  
 debagging to get through Trousers Pass.  
 advantage not taken owing to restricted space.  
 Wasps nest outside hut. — Inserted carbide, and water  
 effect apparently nil —

Monday Aug 6<sup>th</sup> Brick erected survey marks etc. the remainder down? Rods put + Godtchurch. Peter & Party from London away at 7 PM. Back in Camp. Hut levy in Box 8/-  
 less 2 Galls Paraffin  $3/5$   
 12 candles  $1/5\frac{1}{2}$  4/10 $\frac{1}{2}$

Tuesday Aug 7<sup>th</sup> To Blyden for stones. Bali Box 3-1 $\frac{1}{2}$

Commenced survey of south side of Combr, between Twin Brooks. Bracken very high, completed the path along edge of Combr. Unable to survey end path owing to height of Bracken, Poured two Kettles of Boiling water down wasps nest, effect apparently nil.

Wednesday Aug 8<sup>th</sup> Day in Weston, Returned late and poured  $\frac{1}{2}$  pint Paraffin down wasps nest, an set fire to same. Wasps more reasonable and mortified.

Thursday Aug 9<sup>th</sup> More wasps issuing from fresh hole. More paraffin and more fire followed by a wholesale stamping in of nest site, stragglers being liquidated one by one with a spade. Did small survey near Reads. - Rickford.

Friday Aug 10<sup>th</sup> Down Goatchurch with a party of Scouts from Hofield, back at 2 P.M. no casualties.

No water flowing into Bath this week, but Bath remains full. The main reason for the pollution of the Bath water must be the ford when the horses cross, the cut made ~~by~~ last June is partially blocked again. Suggest some form of Culvert be constructed here. There is plenty of Rock about for the purpose.

Sat Aug 11<sup>th</sup> Rain all day F.A. done. Rickford in evening. Peter Bird out at 10.30.

Sun Aug 12<sup>th</sup> Rain most of day. Peter Bird left at 5.15.

Mon Aug 13<sup>th</sup> Erik left at 8.30 A.M. J.H.C.  
P.S. Sorry there is no meths. left yet.

Wed. Aug. 23<sup>rd</sup>

Two boys who had attempted to explore Rod's Pot stated that there had been a roof fall between the 1<sup>st</sup> vertical & the way down to the main cave: there is a loose boulder in a somewhat unstable condition under which or over which one can go it is stated. More stuff seems about to fall.

Cleaned bath

116.

Thur. Aug. 24

Improving up stream channel for bath stream - lost 1 bill hook in process.

## FIRE WOOD.

The increasing scarcity of timber has made birch a valuable wood for various purposes. It is requested that reasonable economy in the use of firewood should be exercised. In selecting trees for felling select those which are not the largest & which have bends or marked twists in the main part of the trunk.

E. M. H. & E. M. T.

Fri. Aug. 25

E. M. H. & E. M. T. Bath stream channel cleared from bath up to main path to connect nearly with portion about 100' cleared on Aug. 24. Only a merest trickle of water not enough to reach bath.

Party had been down Rock's Pot & made no comments about fall. E. M. T.

Saturday 1st September E.K.T. & V.B. out  
 at dinner-time. R.A.B. & J.L. came and  
 left again. E.K.T. & V.B. exploded charge in  
 Road's which will probably have no effect  
 whatsoever.

Sunday 2nd Sept. Lurled from Bath  
 Swallett BM to Mendip Lodge Lane BM.  
 established two new BMs on Hilberts Farm  
 and Hilberts pump house.

Relative heights: -

Pump House 00.00 ft.

BM on farm +87.15

Highest point on path +108.87

Picket at corner of

fence +101.10

P. Nant & N.P. Blackwell out in morning.

P. Nant & D.T.D. inspected Runwington Camp  
 speculating about its origin. Drew up the profile  
 and returned with wheelbarrows.

N.P. Blackwell lost fountain pen  
 green black mottled swan

Sat. 8<sup>th</sup> Sept. 1951 (3)

Put had obviously been used during week. There is no log. entry. ? Les Palmer

Bertie, Molly + Trats to Tynning's Great Swallet. Did 3 hours digging. Material extremely tacky. clay & stones. Removed one boulder. Working face nearly up to turn to W. Sheets of metal one required along floor to facilitate scraping back excavated material. Draught not much in evidence till had been working some time.

MSA

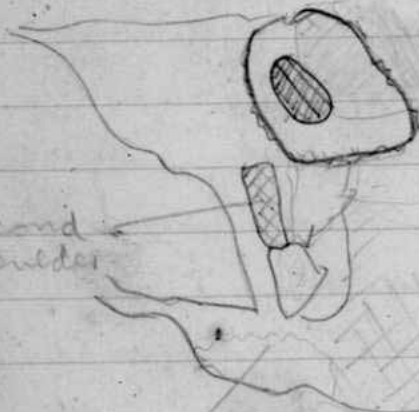
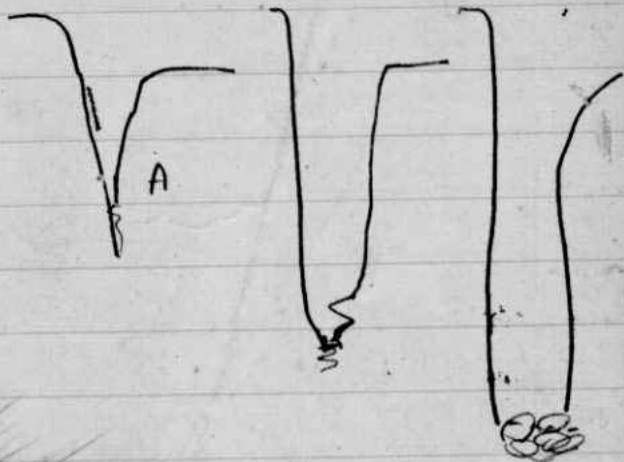
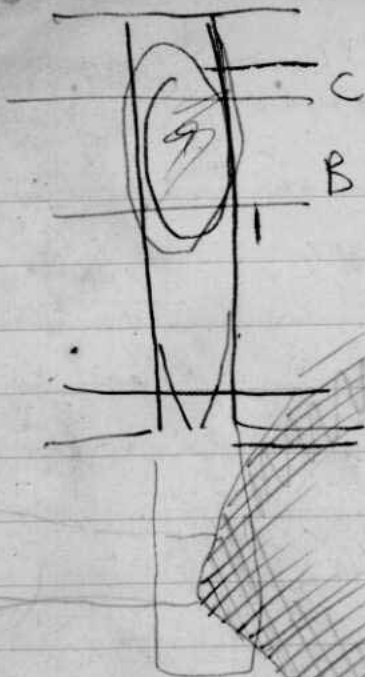
Sun. 9<sup>th</sup> Sept. 1951 (1)

Did some more clearing of both stream above track.

Prepared metal sheets for Tynning's Great Rift.

MSA

[pp. 119-134 blank]



side entrance & corn

second  
boulder

place  
of  
buff

small  
chamber

