

U.B.S.S. LOG BOOK (5)

OCTOBER 8TH 1955

TO

MARCH 13TH 1957

Code 7.21.

University of British Columbia Speleological Society

Log. Book.

J.C.H.

AKS.

CM

RJ

JP

FH

EB

JM

WAR

JK.

Jim

Tony

Carol

Rodney

John

Fluwe

Elizabeth

David

Bill

Jill

Hawkins.

Smeaton (F)

McNelly (F)

Johnston (F)

Plasket (F)

Hetherington (F)

Brookshaw (F)

Mead (F)

Knight (F)

Kitch (F)

Saturday 8th October 1955

Assorted freshers to Coatchurch, Sidcot, Rodis and the Bath Swallet. Old cavern present included E.K.T., C.O., P.R.A., S.R., D.P., M.B., R.M., O.C.L., C.B., C.I., S.W., C.A.W., A.R., M.M..

Freshers - J. Shepherd, Hemming, Thomas, Coulding, Jimmy Watts, P. McKanen, B. Collingridge, D. Newton, J. Hawkings, R. Lewis, A. Jacob, K. Brayfield.

S.R.

Sunday 9th October 1955.

G.W. & C.B. to Rhino rift to try out the new Nellie. Found that by removing the wire supports the car ran clear enough. Removed 7 Nellies, (1 Nellie \approx 1 Buckle).
N.B. For future reference:-

- (i) The wire needs to be surprisingly slack (so that the car just clears the corrugated iron, adjust by shoving an old four-wheeled Nellie between wire & side of rift.)
- (ii) Lower & raise gently.
- (iii) Most large boulders must be smashed with sledgeham (at Rhino now.)
- (iv) Nellie & pulling wire now in ϕ ol shed.

The Nellie works quite well provided the first two conditions are kept.

C. M. Britton.

Sunday October 9th.

Party of 7 to G.B., (C.I., R.M., M.B., A.R., C.A.W., DP & SW)
Digging at bottom removed 30 buckets but work
was stopped by large boulder which must be
blown up. This will not drop to the floor
of the passage. C.I. & R.M. took photographs in
Thompson's Grotto.

SW.

40' cotton lifeline taken down 4B to support centre of
cable-way. - M.B.

MENU - OCTOBER 9th. 6:00 p.m. (g.m.t. = 15:00 hrs.)

Main course. Pommes de terres.
Oignons frits.
Bangers. (beaucoup)
Lard (not lard)
Sauce à la Angou.

Dessert. Baignets aux pommes
Sucre.

Aperitif. Russian Tea — ~~Wot~~ Wot no lemon!

après à la Plume.

Changed gas cylinder. - M.B.



Après
la
plume.
Mica!

Sat. 15th Oct.:

HMS. CAMB. Malford Leavy photographing ~~with~~

Sat. 15th Oct.

Rita & Chris down East Twin. The passage into the third chamber is blocked by a ball.

h.l.

DP and AB + party of freshers down G.B. Two bangs done at the bottom - one boulder smashed and few bits blown off the rock projection 9 out via wet way - 3 out via ooze.

m 3

Rosmary & W.D. down sidcot Sw. photographing. Did fall R.M. stuck in both squeezes & had to be pulled out of upper by C.B. AR SW + lower by W.D.

W.D.

IVY BOWER

It is suggested that those in temporary residence who wish to contemplate undisturbed should fly the Society's Eire flag; and when refused they should leave the flag fastened in a corner lest they lay temptation before our feeble-minded but light-fingered friends of the caving and other fraternities. [— Point - that's what it was pinched for (I.T.)]

S.R.

SUNDAY 16th October.

CMB and HMJ and EKT paid a visit to Rhino Rift to try out Nellie Mk III. Nellie consists of a steel tube about 3 feet long and 6 inches in diameter supported by two vee grooved pulleys. This was run on one span of wire, and proved to be fairly stable. A winch was used at the mouth of the rift. A dozen loads of spoil were removed.

Sunday 16th Oct.,

Parties to Longwood & August Hole. First party: DP, MB, PT, Chas Bunker to bottom. Very little water anywhere but at the end. PT, CB out early, other two to bottom, where arrived amid of second party, consisting of WD, GN & RM. Then five then explored part of upper passage & came out. Entered: 12 noon; Left 4.45 pm. Third party, AR, Kild & Malcolm down Longwood & to top of swing pit, where vital supplies of chocolate were left for the August Hole party.

DP

5

Sunday 16th October

G.B. quest day. 21 guests only.
S.R., G.I., R.B. out via Ooze in wake of 9 sidest
trays who acted as a sponge.

S.R.

Sunday 16th Oct

Before G.B. R.B. & C.I. went down Reads beamon.
Down 2-alley - to prove that we could get out again. Removed all
arrows from some which showed (most unfairly) way out of Robster Pot.

b.l.

Saturday 22nd October, 1955

Oct., Patrick, Jack & Jim to Rhineo rift. We spent our time
removing spoil and one large boulder; 4 buckets & 3 ^{Red.} Killion picks.
It is evident that several tons of spoil must be removed ~~by~~ before any
useful digging can be recommenced. It is quite hopeless to dig in
the Christmas Passage at this level. At its end it is too narrow
and the walls are calcified. The passage almost exactly follows
the ship. It must be deepened very considerably if a way forward
is to be made. We have brought home the bucket for repair & the larger shovel.

After that we had a look at the last rift where the surface
stream normally plunges into August hole. It is dry, now.
Under the bridge there is a chamber 8 ft. deep with sandy mud
on the floor. We removed 40 buckets of this. It seems well
worthwhile to take advantage of the dry season by removing
all this mud, which is very easy, so as to see what the

rift is like underneath. The prospects for getting into the 90' rift to the Water Chamber, or even into the roof of the Langwood Great Rift are reasonably good. O.C. Lynch

Saturday 22nd.

G.B. Mick, G. Fuller, & 9 freshers (Garry Witte, ~~Patrick~~ ~~Thomas~~, Jack Shepherd, a young London lady etc.). Party split into 2 — one section digging @ bottom — some progress made — still looks very encouraging. The other people sight-said & some progress was made in E. Passage — air gets very foul in about 1/2 hour — N.B. CO₂ symptoms are not obvious unless a candle is used — this is important; quite dry choke now as opposed to previous goo. All 11 out after ~ 4 hours. G.F.

P.S. Obstructing boulder blown. — one star drill and 40' cotton rope left down at bottom — M.B.

Saturday 22nd. Party of 7 to Buean (J.T.D. R.M. CAW. N.M.J. H.T. Judith Herran & S.W.) The pit in the corner below the earliest exposed layers was deepened 1 foot & widened. Main bone layer was dug for specimens & some digging on Swan Age layer. Playing sandcastles & explaining

the headland provided amusement for surplus diggers. Sid.

Sunday 23rd Oct.

Chris Bowler, his friend Brian and AR on a pleasure trip to G.B. Took a long time looking round and found our way out the wet way -

SW. GF. CAW and MB went for 9 mile! walk - checked on map it was 13 miles! Chris.
via Sheddar - A* Bridge - Sidcot and back by Dolebury
MB

Party of 4 (incl. Keith Erwin, Garry & Peter) to the August Hole back door (see 22.10.55). Rained 100 large buckets of sandy mud. Level has been lowered $\frac{1}{2}$ ft. There is now a large boulder in the way which needs hanging. Sidcot

~~Gas cylinder changed~~

Saturday 29th October

Leath, Haworth & Mary Robinson down Rod's Pot & Bath Swallet, but derailed halfway by fierce fat slug. C.H.

A.P., S.W. & G.A.W. braved terrors of Rod's. Pleasant, leisurely look around, and then the party went down Drunkards. Contrary to previously expressed opinions, C.W. went through squeeze with no difficulty, but the other two stuck!

C.W.

~~W.A.W.~~ & A.P. got stuck but not the third
S.W.

Opinions seem to differ on this occasion. Annie got through without any difficulty, the other two got through with difficulty.

This is the true state of affairs.

A.P.

G. Kathleen, Anne, A.H., R.M., C.J., Donald, Boris, Roger, M.B. on working party down G.B. More gangs needed to remove boulders in way of bucket line; 250 bucket loads dug. Day looks promising, but floor level will have to be lowered by about two feet, before any more progress can be made in forward direction.

- M.B.

G.W., Peter & Brian down Longwood with party from Bristol Cathedral School. Three school boys went down with shels's & three who arrived late met party in main chamber. There was only a trickle of water in the stream passage. The shels's with two B.C.S. members climbed to foot of water fall at far end of

Main Chamber; rocks were a little unstable.

G.W.

Sunday 20th Oct.

E.S., H.B., G.W., C.W., R.M. & A.R. to Stoke Lane
Had to retreat before reaching summit owing to
one member's crushed ribs - whole party "very
reluctantly" (!!!) turned back.

A.R.

P.J.H., J.H., P.T., A.G. & M.A. down G.B. Main passage & Wet Day
which turned out to be bone dry.

Wednesday evening 2nd November, 1955.

Trinity & Oliver blow the boulder in the dig at August Hole Back Door

Saturday 5 Nov.

Bois, Pat, Don MB (+ KE later) down G.B. for dig
at bottom. Floor of dig was lowered about a foot,
and progress was made down a tight rift to the right.
About 40 buckets removed and trip lasted about 4 hrs.
MB - The inner trap door to G.B. was unlocked!!
Gas cylinders changed

- MB

G.W. Brian & Peter down. Lidcat. G.W. went to Hell, But Peter got half-way and Brian could not go at all. There is a very nice delay at the top of the 70' on the left.

E.W.

Sunday 6th November 1955

Keith Evans, Malcolm Lewis & Rhinier Lloyd dug for about 2 1/2 hours in August Hole Back Dorr. Recovered 60 buckets, including the boulder fragments. Used the sledge hammer from Rhinier's Reft & returned it to tackle shed. Still no water in the stream in spite of heavy rains. No change in character of mud being dug.

Oct.

Saturday 5th Nov.

Inat, RB HT CMB and C.W. went to investigate a hole & its sides and surroundings - added for Miss Bunton) which had lately appeared in a certain Mr Porch's garden. After removing some rock around the top of the hole, a ladder was Miss "Kittenhips" Bunton attempted to descend, but found the way too narrow.

C.W.

Note: After this was bonfire night - duly celebrated.

Sunday 6th Nov

Inat, RB, SW, HT & C.W. returned to Porch's Pot. Joined later by CI. There were 3 bangs, and which removed the boulders blocking the shaft, and also a certain amount

of rock from the entrance. During these operations, which were watched by a large ~~and~~ audience, tea and cakes were served. The shaft is still too narrow to descend.

C.H.W.

Sunday 6th Nov [+ AR who forgot his boots + didn't go down!]

① W.D. B.C. Rm HT PT ② G.W. MB. DP. HQ to Eastwater on double trip. ① down "double vertical" ② down "Dolphin" (leaving the ladder 10' from floor, entailing excessive gymnastics on ascent by ①. "1st hold step" now even bolder & needs a rope. "Fould series" (visited by ①) is quite loose but actually shows some stal formations & roof pendants.



NB. Tackle needed.

Double verticals	—	2 × 25' + lifelines
		2 × belays, and long.
Dolphin pitch		1 - 35' ladder + line
		1 line ^{20'} for 1 st hold step

Saturday 12th November.

E.K.T., S.R., Charlie & Rita to Porch Pot. WD.

Rita & Hans. get past the squeeze. Below the squeeze one lands on a sloping mud floor descending to a narrow passage below a cemented boulder choke. On the left of boulder choke there is a narrow passage which communicates with the passage further on. On negotiating the narrower passage, there is a high rift passage. This point is about 40 ft.

from the surface and 12 from the foot of the entrance drop. The rift is 15-20 ft. high, 2 ft. wide and continues for about 20 ft. The walls are lined with reddish white drops. Further way is blocked with another cemented boulder fall. A passage led over the top for about 6 ft, below there was squeeze with a mud-floor, smooth. The squeeze continued for 5 feet leading to a continuation of the rift passage which was blocked at 6 ft by a further cemented boulder hole through which no passable way was seen. The cave is clean with some curtains & a small water cascade in one of the side passages. General direction of cave NE by NNE. Total Length - 43 ft, Depth 45 ft.



D.A.S. Robertson

Sat. 12th Nov. 1955. Party of four (Chris, Terry, Jim & I) to dig the back door to August Hole. Alas! there is now a considerable stream going down it and a 4' deep pool where we were digging. This is interesting in a way, for it means that though we have dug down about 4 1/2 ft., we haven't opened anything the water can get through. So we went

and did a wet test of longwood instead. There is a torrent coming through the roof of the Great Rift. I believe most of the water is going that way rather than down into August Hole. We did longwood in 2 1/2 hours & then walked back over the top.

O. Lloyd

Sat. 12th Nov '55.

Brian, Garry, Morris, Buis, Walter Schofield, Nigel, left down G.B. Pits silted up, floor silted up and risen 6". Plaster chaise or boulder holding up roof only brought boulder down to floor - and roof silted up. N.B. after getting to cave P.D. discovered that he had forgotten the det. wine, so he & Walter went back on the better motor bike - across Blackdown of course!

E. J. Jenson

Saturday, 12th November 1955

D.T.D., Savage, A.R., R.H. to Brian Down Trench at foot of excavation levelled and cleared. Several large bones removed from Main Bone Layer.

R.H.

Sunday 13th November.

A last visit was made to Porch's Pot, before filling in. H.B. & A.R. pot down, ~~made~~ took a photograph and surveyed. Brian found the entrance rather too small. Tea and cakes, served by Mrs. Porch were greatly appreciated.

Readings are added to the previous diagram - Total length \approx 40 ft - total depth \approx 30 ft. Bearing, (entrance to end) 72° magnetic.

A.R.

Nov. 18 1955

Two to Gough's old. Dug 20 buckets
2-4 ft calcareous layer. A few small bones & snail
shells. Area O/B. *WJ*

Nov. 13th. 1955.

Gary, Rosemary & B.D. to G.B. to bang boulder lowered
yesterday. A double charge in 9" shot hole & a plaster charge smashed
it completely. It was noted on the way out that the results of
various miserable breakfasts were rather detrimental to general
well-being.

E. J. Wood

Saturday 19th Nov. 1955

Party of 14 to Swildon's Hole. These divided themselves up naturally
into 5 rangers, 2 workers & 7 tourists. They will no doubt
write their separate accounts of themselves. The two workers were O.C.
& P.L. McE. we drilled a hole 9" deep ready for banging next
time. I also took some temperatures. They were as follows:

Stream temperatures: at entrance 42.5°F

at head of 40' pit 43.5°F

entering ramp 45°F

in ramp ~~45~~ 45.5°F

"Piddly Green" Stream 47.5°F

Air temperature outside P.G. Stream 47.5°F dry & 47° wet.

It will be seen that the P.G. Stream has reached cave
temperature at this point, but that the main stream hasn't.

O.C. Lloyd

Nov. 19th 1955

C.I., M.B., G.W., D.P., Kath B thro' Swildons 1st sump. Took things 1x40 ft. ladder & line about did not use these, as the Black Hole could not be found: we therefore traversed via various chutes & creeps to the second sump, where, after a short pause, back to the first sump. Language used on the downstream side of the sump was definitely not repetitive, but showed that members had a good command of this side of the English language. The trip back to the surface was not without incident, but at least we didn't have to bring out the tickle.

Total time (surface - surface) 5 hrs. A very enjoyable, if somewhat ~~long~~ trip! DAMP
Camp
~~trip~~

PS Nopers worked for sufficient time.

PPS This was K.B.'s first Swildons, first ladder & first sump - surely a record.

Nov 19th

The tourists were AJ, AE, NDCE, DN, BC, SW + Cdw. The party proceeded at a leisurely pace through the cave, via Barnes' Loop and Ina's Temple. BC + Cdw went on to look at St Paul's.

On way down to sump met Oliver returning and learned that sump party had already gone out.

On the way out AJ, who was very tired, fell from the top of the 20'. - No damage, but the moral is clear: it is foolhardy and dangerous to attempt this awkward climb without a lifeline. Came out after 7 hrs. Quite a pleasant trip - all in all.

Cdw.

Nov 18th Have borrowed 2 blankets. CAW.

Returned with gear from P. Wales trip. (CW)

Sunday, 20th November, 1955

Party of 5 to G.B. (trinit trip), including Chris Lloyd, David & John Sherret, Peter Adams & Chris Ineson. We returned through 4" of water in the Devil's Elbow and broke the ice. SW.

Party of 9 to Gough's Old Cave. Dug some calcareous layer 0/10. Method cleaning E side rubble. Modern + Roman pottery SW

Sunday 20 Nov. 55

Party of 7 down Reddy Pot. Descended pit on rope and thence to bottom
C. Ineson

26th Nov.

Don, Brian, Keith, Ann, Lyoff - Bond, D.P. to G.B. dig. Removed the remains of the blown boulder and lots of silt & small pebbles - 80 buckets in all. A lot of this had been washed in by the last flood. The position looks quite hopeful, but much more silt must be removed before further progress can be made. It looks as if another boulder will have to be barged down. The position is



Apparently the boulder shown is blocking a quite large passage.

D.P.

Sunday 27th Nov.

Mended two large Tilley lamps. Young, well now Small black one requires attention to the pump which leaks badly.
CMB.

Saturday 26th Nov.

Working Party of 4 to Swildon's (Ox., G.W., P.I. Mel. & B.C) to "P.G. Stream".
Blew the hole which we prepared a week ago; shifted the stop nicely.
Drilled a new hole about 18" back, vertically, for 8 1/2". This should be deepened another 3" before hanging next time. We are now within reach of the mud. The apex of the rock is about 18" behind the hole now drilled. We used the new 40' ladder for the first time, after filling the end fillings, so as not to tear our trousers. It seems all right; quite nice to climb.

Sunday 27th November

Trathy, Oliver & Keith Evans to Manor Farm, Charterhouse and Langwood. Negotiations now complete with Farmer Jeffries at Manor Farm for taking over the dig.

THE MANOR FARM DIG IS NOW OURS !

Then to Lower Farm, where we dug in the August-Hole Back Door (now dry, no harm done by water). Only 2 1/2 buckets of earth removed, as the handle then broke.

THE SOCIETY NEEDS MORE BUCKETS

or, alternatively, too many of the Society's buckets are left down dips, since they are not much used. (eg. Long Hole, Batts Swallet).

Will Members please note that as a result of negotiations between The President & Farmer Young, conducted on 2.11.55, they are now expected to pay one shilling each time they visit Longwood or August Hole, except for business trips (working parties.)

J. G. Lloyd

This is the first time I have entered a cave after passing thro' the top of a large beech/ash tree - 1/4.12.

Sunday, 27th. November.

Party of 4. G.W., P.P., P.I.M., A.J.C., G.M.B., to August Hole. Cave was dry. P.I.M. & G.M.B. felt tired at the bottom of the Fault Chamber and did not go down the Stream Passage. Raking on the Swing Pitch by the Preston Method facilitated descent but a little trouble was found here on return, partly due to unstable rock.

G.W.

Saturday 3rd Dec.

S.W., C.I. take freshers - 3 of 'em! - ladder climbing. It is suggested that the following learn to climb ladders before attempting any ladder climbing down caves. - Misses K.B., A.J., Messrs D.N., Boris P.J.T., J.S., N.D.C.E.,
G. Jones

Saturday 3rd December, 1958

Party of 4 (Garry Witts, Brian Collingridge, Don Newton & Oliver Lloyd) to dig in back door to August Hole; nice & dry; no further lumber in the way, but the woodmen threatens to block it up again, when getting the wood away! 100 buckets removed in 2 1/2 hours. Straightforward. ocd.

Saturday, 3rd December

G.B. Guest Day - E.K.T., Geoff. Fuller and S.R. 15 min late. 38 Guests; one illicit from Bristol Grammar School. 3 from Wesssex kept party waiting by cooking soup in Gorge - polite note to be sent to Wesssex.

MEMBERS MUST REPLACE ^{S.R.} THE
LID OF THE CARBIDE TIN
AFTER USE.

S.R.

Sat 3rd Dec. - Sunday, 4th Dec.

GW & B.C. down Zed alley. on 3 hour tick after p 'Plumbing'.
(11.0pm - 2am) Need note be said?

Saw two bats, one button, and half a trouser leg.

B.C. & G.W.

Saturday, 3rd Dec.

6 members (C.I., H.B., R.H., D.P., P.H. & A.R.) went down G.B. after a visit to the Plume - dug out 95 buckets in 3 hrs. A large boulder blocks the way & needs blasting - To bed 4.00 -

A.R.

Sunday 4th Dec

Party of 7 to Gough's old cave - Romano-British layer on left & 6 buckets of calcareous layer - President had to drive mobile back, but R.H., G.W., P.H., D.P., B.C. & A.R. walked back over the top.

A.R.

Sunday 4th December.

Peter Adams, David Sherret, Keith Evans & O.C.H. to back dr. of August Hole. Rinsed 100 buckets of spoil, & unearthed another boulder fit to be banged at mid-week. We have now breccia to flow $\approx 6'$

Keith Evans.

Sunday 4th December.

C. Ineson, M. Balfour & G. Fuller down G.B. - drilled short hole & removed obstructing boulder. Joined by M. Askew, Boris, H.P. Whiteing, Pat Heasman, Kath Burfield, Pat Tandy, Geoff Lyth, Tony Morrison, & a very efficient digging party was organized - good progress was made & prospects are looking bright - all except the roof. Owing to a possible excess of vigour, a lump hammer was broken in halves (the heavy end).

Friday Dec. 9th

found

1. Toolshed door wide open
2. Caravan door " "

Under Hut Rules it is the responsibility of the last party to leave to see to the following.

1. Sweep out hut.
 2. Shut up hut & toolshed properly
 3. Shut up caravan properly
 4. Turn off gas
- GMD

About 6 mths ago in the course of a rag damage was done to the ♀ quarters. The necessary items for the repair have been available for months but the repairs have not been done. GMD

Saturday Dec 10th

M.B. WJ. Pat, Tony Morrison, G.W. Peter to G.B. for digging party. About 50 buckets removed, and progress made in roof. Something strange happened to the party's clothes left at the hut while Andree and Rosemary were there.

Sunday Dec 11

4 to upper Swildon (P.S., T.R., K.M.E., M.F.L.). A very pleasant little trip. Suggest necessity for a cranking staff to assist with the rope.

15/2/55

When was gas cylinder changed please?
No entry in log. M

Thursday. 29th. Dec.

Party of 6. (M.B., R.M., P.M., B.C., A.J.M., G.W.) down Swildon's Hole to Black.Hole. For the second time running a very heavy pack with tackle for crossing the Black.Hole was taken and not used! Descent to the sump was uneventful. The sump was —. Here a mad man from W.C.C. was encountered who emerged demanding a hammer and was last seen diving through to Swildon's II intent on diving a raw bolt with bare hands. We were encouraged by six liberal drips who had dived the sump for fun!

Once through the sump we made tracks for the Black.Hole, a ten foot overhang was climbed for which a rope is helpful. Beyond this we accidentally got into the ^{Mayday} ~~Hoover~~ Mud Series. No description fit for this log does justice to the series. We eventually found the B.H.

looked at it, spat into it, and returned.

On the return journey the main streamway was found to be in state. The 'party' was in as bad a condition as any member had seen it. The drain pipe could not take the full stream, so that the surplus water fell directly onto the climber from above. All rise found difficulty on this hitch. Above the 'party' the creeks were almost running.

The party was not a little fatigued on leaving the cave and retired to the 'Victoria' for refreshment.

Archaeological Foot Note.

A bone of red deer / Celtic shorthorn / goat was brought to the surface from the floor of Calcutta.
Linguistic addendum.

Language was very restrained on this trip - quite an unexpected event considering the obstacles overcome.

By W. H. H.

Friday 20 Dec.

Members slept until 11 am. Lazy day spent by all - no carrying.

Saturday. 31 Dec.

PIM, WD and MB on short trip down GB to inspect dig at end. Dam is still complete but leaks badly. However dig has not suffered from recent heavy rain.

Trevor Shaw & Chris Lloyd to Reed's Cavern for a pleasant little 2 1/2 hour trip. Explored the boulder chamber and its associated niches fairly thoroughly. Beyond the B.C. is a little grotto with gnomes (mudgy) containing springtails but no asellids; some pretty staphylinids to one side of this, all within reach broken, but some fortunately out of reach and intact. We finished by looking at just the beginning of Z alley: quite enough!

New Year's Eve

The customary party was held this evening at the hut. Those present were The President, Bertie Cook, Molly Hall, Gerry Sprouge, Cliff Illier, Steven Robertson, Chris Lloyd, Sheila Watts, Angus Watkins, Rosemary Minns, Mick Ballinger, Gerry Wills, Peter McLarnon, William Dawson & Trevor Shaw. Most of them made the mistake of getting thoroughly hot up at the Phoenix before zero hour (10. pm.), so that Gerry, Peter & William on arrival at the hut were in no fit state to enjoy the dinner.

The menu was as follows:

Soup, à la Molly Hall

Roast leg of pork & stuffing

Boiled beef

Potatoes

Sherry (mainly South African)

Moulin à vent, 1949 (Burgundy)

Sprouts
 Christmas Pudding
 Rum-butter sauce
 Dessert

Merle Rinsing (Yagorlar)
 and various other wines

This was greatly enjoyed by those who had not ^{locally} had such ^{exotic} things. She formed a solid phalanx on one side of the table: they were decanted by the ladies.

After this we were joined by our household guests from the farm, Mary & Gould Abbott & Patrick. Some songs were sung, these were not (fully kept interrupting). It was not altogether her fault as she was receiving unaccustomed stimulation from Jerry & Cliff who were seated ^{at intervals} on each side (left).

Eventually the Morris Squeeze Machine, which had been "borrowed" from Hill Jones earlier that evening, was brought into play and competition began in real earnest. Up till this time only Peter had actually vomited, but as the gap grew narrower, more and more fell victim to gastric antiperistalsis: Cliff, Jerry, Mick & William. We are pleased to record, however, that the Morris record (was broken by The Secretary, who got through 5 5/8", but this was only effected by severe bruising of his sacral & perineal regions. He had to sleep on his side. ^{Mick was the rumber up, stripping almost completely for the purpose. The three omitted,} Mick curled up on the couch & became as one dead.

When the ladies had gone to bed a little singing broke out again, but it was too late to revive the party spirit. Trevor, Chris & Stinson then did all the washing up, while the others drifted off to bed (except Mick).

After lights out the fun really began. First Mick started

making a noise like a banshee in pain. He then tried to climb the mantlepiece, in the belief that it was his bunk, & nearly tipped his clothes into the fire. Stream resumed him & put him to bed. Just as we were going off to sleep again, Angus (who had been out on the tiles with Sheila) started up by vomiting all over his bed. Stream Florence Megitt & Robert then got up again, washed Angus & provided him with a bowl, which he ^{at about filling} ~~filled~~ at various intervals for the rest of the night & the next morning. William won't sick again until the next morning.

O.C.L.
1.1.56.

Saturday 7th January, 1956

O.C.L. and Robert Worley to Cuckoo Caves.

Harding did jobs about the hut (bolt on shelter &c.)

Trathy & Rita helped Portus on the barrow.

Trathy, O.C.L. to M.A.R.C. Jubilee Dinner at Wells. They claim to be the oldest caving club in the country. They do not admit that the Yorkshire Ramblers are a caving club. (Well, well!)

Sun. Jan 8th

Alvir Lloyd, Keith Evans, Malcolm Lewis, Rita Buxton, ^{Harding Jenkins,} Robert Worley and Robert Holmeshow to Eastwater. Went down the Dolphin Pot route. It is almost untried, now, to have a total of 60 ft. of boulder here, now, as the 1st bld step is almost impossible to manage with a rope only, since the boulder came out in June last year. We then went up Harris' Passage & explored the

Uplift Series, with the help of a tracing from Denis Webster's survey. It is very nice, consisting of a series of steep loose boulder rubble: a collector's piece. After a meal at the foot of the Dolphin Vertical we returned home. A 4 1/2 hour trip. od.

Wed. 11th Jan.

Party of 6 (Mike Arkew, Boris, Pat Tansye, Pat Healyman, P. J. T. and G.W.) to Eastwade. Proceeded down Dolphin Pot route and used 60' ladder as advised above. This cut out the 'first Bold Steh' entirely - a pity. The ladies objected to the 'Second Bold Steh' after 11.9, G.W. was a doctor and as we were short of time we retreated. Refreshment was sought in the Hunter's. After a stop in Cheddar for a telephone call the Patonobile refused to start. A tow given by a local garage man - whose radiated was empty and had to be used to first - we eventually moved off at midnight. A very pleasant trip - thatoughly enjoyed by all.

G. W. H.

Sat. 14th January, 1956

Don Newton & Oliver Lloyd to Reads Cavern, with the object of finding the water-way under the W. end of the main chamber. We went down at the SW corner & after a long while I recognized marks on boulders that I made a fortnight ago, in a part of the boulder rubble that Town & I had reached by a route from the Boulder Chamber. We went on down until we were in solid rock. The way forward is a narrow tunnel.

We returned by way of the Boulder Chamber. The rubble is full of sharp tight squeezes: very bad for the outer clothing, amongst other things. 2 3/4 hours. v. pleasant. R.L.

8 to Stoke Lane (A.R., N.B., G.W., P.E.M., F.H., R.R.C., K.B., C.I.). After a round about trip (Vello!!!) to the cave it was descended. The water was somewhat cool and rather deeper than normal. The sumb was found but not hessed because of the doubts when, after a bit of fishing it was stated that there was no air space. The author enjoyed the way out listening to people revering about the various sharp-floored crawls while he bounced merrily along on rubber knee pads. The hot-iron-come-water in the barn afterwards was appreciated much more ^{than} that which had soaked our clothing.

C. I. near

Len. Jan. 15th 1956

7 to Gough's Old Cave.

continued digging in narrow crack on E side. A few fragments of pottery + some animal bones.

Digging in calcareous layer on W. side. No finds of importance. R.L.

Jan 15. 56.

Party of 7 to G.B. C.I. O.C.L., Pat Heanyman, KB
P.S.T., R.M., A.J.H.

I went to dig at the bottom, (6 buckets). afterwards
joined by O.C.L. & A.J.H. who had visited the Loop Passage
& Ox Bow. On the return journey the Dose was
attempted but after much struggle on the part of
C.I. & R.M.; was found to be in an impassable condition.

At this stage C.I. suggested that the outward journey
should be via the wet way. P.H. & B. R.M. P.S.T.
went via the dry way, Chris talked himself to
the remainder. and one O.C.L. P.S.T. & A.J.H. were
well under the water quickly slipped back and was
not seen again until the entrance !! No Comment.
A.J.H.

21st January, 1956.

O.C.L. Woodmunch.

Saturday Jan 21st, 1956.

Party of 5 to G.B. (E.K.T., S.W., R.B., Geoff [bearded one]
and D.N) to inspect dig. 

As a result of a not unappreciable flow of water
down the gorge, the dig had ~~been~~ was found flooded, to ~~roof level~~.
Efforts to divert the stream away from the dig met with some
success, and it was noticed that within a few minutes the level
fell by about 4". This rate of fall was accelerated somewhat by

energetic baling with a bucket, and when we left the level was about 12" below the original.

Returned after a brief glance at dig in East Passage.

DW.

Sunday 22nd January, 1956

Peter Melara, Tony Morrison and Oliver Lloyd on photographic trip to G.B. 2 hrs. 40 minutes, 3 photographs.

Sat. 21st January.

Party of 9 to Eastwater. G.W., P.R., A.J.M., P.I.I., down 1st & 2nd verticals, M.B., C.I., A.R., R.M., T.S. down Dolphin Route. The two parties linked up at the 2nd Boldt Stk and proceeded down the orbow to the entrance to the Beecher Series. Here a tight rift inclined at 40° was tackled and G.W. descended at the bottom he traversed across and entered the bottom of Mud Escalator. Some 45 mins later and 30' up he was yelling among other things for assistance. This was subplied by A.J.M. who did the series in reverse. Passing this A.R. and D.P. descended the Fourteen Pots. When G.W. and A.J.M. emerged C.I. attempted the series. He quickly became blinded with mud and several times tried to bury his lambs in the flood. Eventually he returned to the foot of the Escalator and tried again. He again could not see and so having whunted several times up and down the Escalator returned up the ladder uttering oaths appropriate.

after this T.S. did the exercises in combative silence
and the Party more or less emerged at midnight.

NOTE. This is a place to avoid

G. W. H. S.

The word "Becher" has now been installed as the correct possible
Speltz Oath. ^{Also C.T. is thanks to P.T.M. for filling former's tank by natural}
_{means while former was under great high pressure.}

Sun 22nd Jan

To Breaux by Land Rover - no casualties. A.M. &
D.D., Rita, Shida, Harding ^{P.H. & M.A.} & 2 others. Excavation at
foot of Pleistocene section nearly $\frac{1}{2}$ full of debris
thrown in by Spring tides. This was cleared out
& a wall built up on inner side of spoil heap. Further
progress downwards retarded by a large boulder which
did not respond to a sledge. ? By blowing next time
Some bones collected from layer 10, & a little from age
material from loose debris at S end of section.

D.D.

Sun 23rd

Large party to G.B.: G.W., Boris, D.P., P.T., K.B., + 8 Richard
wedge crew. Down to bottom with delay while O.C.L. took
& party put up: then up the orlow, loop & while my back to
main chamber. One via net way - and it is net! A pleasant trip
enjoyed by all. (4 $\frac{1}{2}$ hr trip)

D.P.

Dec 22nd

A.R., A.M., M.B., C.I. into C.B. First to Thompson's hut for some photographs then M.B., C.I. into hut gallery and looked down into gorge to see A.R. & R.H. who were round the bottom (The ant was not noticed).

L. Iverson

Wed. 25/1/56.

Reported by Mr. Hubbard that toilet left open.
Kitchen window at back left open.

On an average in term time hut is left open at least 1 week in 3.

Putting in concrete base for gas cylinder at back of hut.

Wed. 25th Jan.

Pleasure trip to G B by Chris & Andree - Lower Sand Dig takes $\frac{1}{2}$ stream & strike passage at the bottom takes the rest -
Down about $3\frac{1}{2}$ hrs.

AR

28/1/56.

+ two friends

M.H.R.T. & C.H.B. to Eastwater to prove some heat fault theories. We were very pleased to prove their existence. The main movement is observed in the Boulder chamber with subsidiary faults in the two left chambers. Noticed many interesting features accompanying the movement. Took notes & photos.

C.M. Bradford.

28/1/56

E.R.T., Kath, Ann Jacobs, Pat Tangye^{OH} Makye^{P.T.}, Sheila Rosemary, Maurion Piper, Mick, Roger, Jim Hawkins, Tony Stockdale, Secretary. To G.B. and Tynny Great. Tynny Great Filled in - cow proof. About 20 buckets from strike passage communicating with streams 6-8 feet away. Passage narrow and wet. Some leakage through dam. Various tourist trips etc.

S. Robertson

28/29/1/56.

KATH, PAT TANGYE, TONY STOCKDALE, G.W. & A.J.M. to Reads Casem, intent upon visiting ZOO Alley. Unfortunately the party was in a fit state ^{WASHY} and the passage did not present any undue difficulty. G.W. has decided for about the 3rd time in two weeks that he is determined to forsake saving for a life of constant inebriation

A.J.M.

28/29/1/56

11 pm Peter + Dave to Swildons with no particular object in mind, other than inspecting other parties activities.

Down to the top of the 40' where an unsafe lifeline was adjusted, then pottering round the Upper Swildons 'til the party in question appeared and was guided out.

Back to the hut 4 am Sunday.

DP

PS The road to Swildons is straighter than it used to be.

29/1/56

K.B., D.N., Boris + 2 London U. College ^{Students} Tim Smiley, Don PLANTEROS to G.B. for tourist's trip, which was enjoyed by all.

H.G.

Party to Tynings Great Swallet to fill in. Hole now thought to be no longer a danger to cattle.

29/1/56.

R.B., G.W., A.M., C.I. and a stranger whose name is S.E.S. went to look at the water going down Sorewood shaft - and then had a good trip down G.B.

G. J. Pearson

4/2/56

GAS CYLINDER CHANGED

D.W.

4th Feb. 1956.

Woking Hole Archæo - Diving Op. no 1, '56, they called it, but mostly it consisted in collecting algae & muck for Dr. Round. He, Tratty, Ock, Harding, Geoff Fuller, ~~and~~ Charlie, and the Goat went over from Berrington, but the divers (John Austin, Oliver Wells & Luke Downish) were late & nothing very much happened until 10:15. The shale streamway was explored from near the emergence to above 4. In the lower reaches some bottles were found and the 2 ones lost in Nov. 1954 during the floods. Some upper corals were again found in 3, while Luke found some more bones (2 pieces of left human ulna) in 4, together with a bit of clay pipe. Tratty took his cine camera and shot Luke diving. We also shot the Daily Mail photographers taking a shot of the divers bringing out pennies. ~~Tratty took~~ The operation ended at about 1:30 am. Tratty brought Geoff Fuller back here; Harding returned with Ock, arriving at about 3 am. in the fog. But by 3:45 am. Charlie & the Goat went back to Berrington with Ted Allason.

At about 4 am. we were awakened by the Blandford policeman inquiring for the shoreabouts of the Goat, who had been missed from Berrington, not having made satisfactory arrangements for being out late.

Ock.

4th Feb. 1956. Plume:-! A.J.M. Downed 3 points in a total time of 17.25 seconds. The last sinking took 5.25 seconds. Surely a record!! BRC.

Feb. 5th 1956.

Read's Cavern Frost & thaw have caused a substantial fall of several hundred weight just inside entrance on right (east). Also remains of old concrete gate frame has shifted forward about 2" on right. E.H.H.

Party of 5 (Jerry, Tony, Brian, Kette & Olin) did the lower Burnington caves. The order in which we did them was Whitcombe's I & II, East Twin, Trout's Crock, Fox Hole, Toad Hole, Mine shaft, Elephant's Hole & Archine's. The ones we didn't do were the Hole in Archine's Cliff, Eldred's Hole, Millier's Quarry. Oct.

Saturday, 10th Feb.

Party of four: M.B.S.I., A.R., R.H., left hut at approx 11pm to try the pleasures of C.B. by night. The descent of campers and equipment to the Upper Sand dicy was uneventful and completed by 12:30. As the tent was not available, hammocks were spread on the ground to protect from the damp underneath; sleeping bags provided protection from drips - not very many of them - from above. Every body spent a comfortable ^{night} except possibly C.I. whose precarious perch at the outer edge was responsible for one or two tumbles into the stream during the night! At about 10am, the breakfast party of P.T., D.H.S., T.R.S., D.R.P., P.H.M., arrived - a meal was served to everybody.

Afterwards everybody except A.R., R.H. started a digging party, as a result of which 45 buckets were removed from the roof of the dig. The other two tidied up the camp and prepared a meal, which is surely rather unusual for a cave - pea soup, eggs, Christmas pudding (many thanks to T.R.S. for this!), oranges, with strong!! tea to wash it all down. The kit was then divided between all present and taken out of the cave. T.A. Donald joined the party as lunch was being served!

R.H.

Damage to some hut cutlery and crockery is due to a slight disagreement among certain members as to the proper uses of the water in the washing-up bowl!!

Saturday 1st Feb.

Working (!) Party of G.W., R.B., P.I.M., C.I. thro' route to Black Hole. C.I. climbed across and back, finding the return ~~diff~~ journey slightly more difficult. After this a hole was wanted to take a round bolt, but after 2 1/2" the party decided it was too cold to continue so a retreat was organised. It should be noted that a rather important handhold on the 10ft overhang did not hold C.I. and so the 10ft overhang is now even more difficult.

G. Foster

Feb. 11 Lab. Read's cavern Further falls at entrance. Remains of old gate frame is now inside cave. + some more to come. *WJ*

Saturday, Feb. 11 A party of 8 went into Surliton about 4.45. When O.C.L. with members of Wessux and other clubs were scavenging - A.R., A.J.S., A.J.N., G. B. (sh), P.T., K.B., K.E., T.R.S. We dealt with the section between the sump and the last pit, the hole having been laddered already by Wessux. A.R., A.J.N. & K.E. & T.R.S. remained by the sump to see the Black-Holes out - and the listen to their imprecations. A.J.S. lifelined them out, and the other four of us followed more leisurely, deladdering the cave and returning the gear to Killgore.

Return to the spules hut about half past midnight heralded an archaeological night. Seven members felt impelled to study Dolebury Camp between 0300 and 0430. Six of these, with a further desire to study Celtic environment set off towards Bussington Camp after supper at five. Taking sleeping bags and blankets they slept under the stars and enjoyed a magnificent view over the loom; it was overcast and pitch black. Intermittent snow blew away mostly before melting, and all but one of the party were warm and comfortable. (?)

T.R.S.

Sun Feb. 12 W.D. ENT + J. Standing to Drear. They at base of Pleistocene section + broke up large boulders.

GAS CYLINDER CHANGED

Saturday, Feb. 18

C.I., A.J.P., A.R. & T.R.S. to Swildon - Black Hole. Entered cave 08.20. a.m. carrying Black Hole ladder and dry clothes. Trouble experienced in getting packs of dry clothes through the sumps - too much buoyancy in each bag despite weighting. This resulted in five double sump trips between the four members of the party. A quick visit to the Black Hole and out again leaving tackle in place for second party. Left cave 3.0 p.m. The rest of the night and Sunday morning providing "service with a smile" to best-riddden members of the second Black Hole party

T.R.S.

Sat-Sunday 18th-19th Feb

K.M., K.B., B.R.C., P.E.M., H.S., M.B., D.P., G.W. to Swildon's Black Hole after a 'quiet' evening in the Hunter's. Due to several light failures (B.R.C. lost his jet 20' from the entrance!) B.R.C. & R.M. decided to remain this side of Sump E and visited part of St. Paul's series. The other six proceeded to Black Hole, r.B. & P.E.M. putting dry clothes on, en route. While rawbolt was being fixed the R.H. was laddered and the party descended and explored wet and dry passages at the bottom. The bolt was tested when fixed, and found to be satisfactory. The tackle was then reassembled and the party retreated to the other side of Sump E where B.R.C. & R.M. were joined. Chocolate and glucose were served. The journey out was strenuous if uneventful. A nice six hour trip.

G.Watts.

overboard in Barn afterwards - 'I can never remember to swear when going through the sump!!'

Saturday 25th February.

M.B., P.I.H., G.W., A.J.H., B.R.C., G.G., G.H.B., D.N., K.B., P.T., M.A & Eyebrows, R.H. and E.K.T. to Lamb Leer in two parties. The first party intended en route to act as pig carriers for Mr Sayes. The first six and R.H. proceeded down the cave to the bottom of the vertical and made a short visit to the Cave of Falling Waters. When they returned to the Main Chamber the rest of the party were descending the ladder. The first part went up the pit and out: followed 30 minutes later by the second party.

P.M.

25th Feb. Plum. Tony Morrison broke his drinking record, downing 1 pint bitter in $4\frac{3}{4}$ secs. an exhibition pint was downed for the benefit of the locals.

Sunday 26th Feb.

Party of 3 (K.B. G.P.G. & A.J.H.) to Rods & Sidcot, - interesting but uneventful.

A.J.H.

Sunday 26th Feb.

P.I.H., M.B., G.M.B., G.W. to G.B. dig. Removed 1 bucket and had two bangs. a small passage near the roof needs enlarging by removing stal. flat.

G.G.

Same day.

D. T. D., R. B.; AMA went to Brean & deepened the pit, now 7 ft deep & showing signs of becoming a loose boulder rubble. Returned to H. Q. to find it in characteristic condition, the base spineless subnormal impotent & total, ignorant illiterate ~~Sea~~ **BASTARDS** & bastardesses present having strewn their sodden decaying festering purulent garments all around the interior of the living accommodations. It may be observed that these conditions would not be tolerated in even a third rate brothel*. It has been known for ex-inmates of Belsen to remark apropos of UBSS field H. Q. that the accommodation was strictly comparable, this when the place was well kept.

The present members display a talent for pig ~~carrying~~ ^{carrying} they would do well to take up residence with these infatinate animals.

Departed to boozed as soon as opened after purging the mess somewhat.

A. D. A. D. T. D.

* Anglice "Bawdy House"

3/3/56. Read's cavern

Visited entrance. More material is slipping & has slipped. Material is in unstable equilibrium. Acceleration due to G. may occur at any time. Eff

Porthos & party filling in on T5.

3.3.56. Roos.

A.I. D.P. J. Rice, T. Disto J.C. Hawkins & G.G.
went down Roos - muddy, ow lamp ran out of
water and was appropriately "fixed".

A.I. huddled down a concealed 20ft. ~~drop~~
drop, to the consternation of the others, but
sustained no injury.

3.3.56 Primrose Pot.

1st party down 3.30 pm last up 12.00

GW to bottom

KB TTJ to 2nd ledge

WD + 1. sherpa ^{?TENSING?} to 1st ledge

CMB + BC + 7 sherpas supporting

After a very dry & desert water soaked
through and made the 2nd ledge + the
squeeze a trifle unpleasant. Squeeze

Party somewhat exhausted. ~~As~~ Charles
 cheese ~~ayita~~ raisins chocolate glucose etc
~~was~~ especially the hot soup was
 very welcome. To help the rest
 of the club who ~~will~~ ~~have~~ want to
 descend in a weeks time, we ~~left~~ ^{left}
 the place laddered.

N.B. Heavy slickensiding is present
 on certain parts of the squeeze
 Brian reckons ^{now that} this cave has a
 twisted sense of humour. Earlier it was ^{just} BLOOD.
 Garry says that after a couple
 more trips like that he is giving up
 caving. HOOKAY

NB. Top pitch laddered 2nd pitch laddered
 2nd ledge contains tackle for 3rd pitch
 also down - 1 Druggies rope
 2 tethers
 1 small bag.

We suggest that Oliver holds a scavenging
 trip down the P-path + post. WD.
 VIEWS of SQUEEZE in Older English as heard
 and seen from the Upper End.
 Difficulty was found in hearing the comments of patients in the

squeeze while bawdy ~~comments~~ songs echoed from end to end
One or two were heard, when called at the right time however.

eg. Song. $\text{♩} \text{♩} \text{♩}$ - "Till in ecstasy decided".

Kath "Pull, Pull, for Christ's sake."

Going down KB was also the cause for some merriment.

Towhit. KB. "I'm stuck in a B. awkward place"

Male laughter from above. KB "You can laugh it'll be far more awkward for you."

Similarly coming out.

KB. "I'm stuck in the same place as I was last time."

B.C. "But Kath you've moved quite a long way."

KB. "I don't mean it that way."

BC. "Kath, where are you stuck, your buttocks, chest or head"

KB. "The whole B. lot and a string of Foreign oaths believed to be not Old English but New German and French"

Most male comments were original but unprintable, the gallantry of G.W. mustle recorded however when he first of all assisted KB. to reverse & remove her boiler suit and then allowed her to use his head as a stepping stone. The same member, though he asked Wittyly where the squeeze was, going down, mustle recorded as vowing never to go through again when coming up.

This was the unanimous opinion of all who got so far
so it is to be noted that so much tackle was left down that the society has not even enough tatter for its goat.

P.S. It is advisable to tether the dragging line with turns to the top of the first 40'. Otherwise a repeat performance will have to be held when the first man out, A Sherpa, found that he had to wait 15 minutes in the streamway while we vainly attempted to pass the line to him. Eventually this was achieved. He took 45 minutes to get out, dying many times. Kath took an hour to get out, William about 15 minutes as he was very tired, G.W. 25 minutes as the pullers were very tired. T.T. came out beautifully like a ---- out of a ---- ! RR.

Maschke^{TR} Explorers Club party (5) down Gostekunch
+ Sidcot, 3 hour trip.

PRINROSE POT. 10th MARCH 1956

After a series of minor difficulties in ^{the} early preparations for the trip, the party was rewarded by a great measure of success. This was due to good team work & coordination between those on the far side of the squeeze and the dragging party.

Party down at 3:30 PM. H.N.J. M.B. G.W. D.P. T.R.S. A.R. K.B. & A.J.M.
As little tackle had to be taken down (Many thanks to the members of last week's trip!!) rapid progress was made to the squeeze.

G.W. proceeded thro' the squeeze descended to 30' pitch and retrieved the bar necessary to prevent the top of this ladder being jammed in the rift.

Once fixed the following members, (alternated with tackle etc) made their way thro' to the first ledge.

M.B. + camera, T.R.S. A.R. H.N.J. & A.J.M.

The time when the last person entered the squeeze was 7 PM.

A number of efficient descents were then made to the bottom of the pot

G.W. remained on the 1st ledge for the whole time, and lined members down the 65' pitch.

M.B. arrived on the 2nd ledge and was soon joined

* Ref.

by A.R. & T.R.S.

André then lifted the 2 male members to the bottom of the pit & returned to the 1st ledge. A.J.M. after being on 2nd ledge was lifted to the bottom of the 90' by H.M.J. who also brought T.R.S. to ledge 2. He then made his way down the last pitch.

Now it was decided to get the tackle & the party out. A.J.M. came to ledge 2 and H.M.J. brought (with very great difficulty & not advised in future) the bottom of the 90' ladder up with him.

All the ladders were taken back thro' the squeeze with much trouble & then the major fun started.

The team is indebted to O.C.L., G.G.F., P.T., & M.J.A. (Mike) who acted as a dragging party.

M.B. came through the squeeze in less than 5 mins & on his return D.P. & K.B. departed for home.

A.J.M. followed in $8\frac{1}{2}$ mins. + a few minor expletives.

H.M.J. did a steady 5 mins

A.R. excelled herself - with 2 mins

G.W. $3\frac{1}{2}$

& T.R.S. + boiler and c. helmet 3 mins.

Before the last member was out of the squeeze H.B., P.T. & H.M.J. made their way out + some more tackle.

POINTS TO NOTE.

- 1) The iron bar at the top of the 30' pitch is unstable & it should be secured to the ladder by cord to prevent its precipitation into the depths. (If this does occur the language from below is far from mild.)
- 2) Before members come back through the squeeze it is distinctly advisable to remove boiler suits at the 1st ledge. The person concerned climbs the ladder and hauls his clothes after him. - They should then be pulled through before an attempt is made to haul the unfortunate out. Hats + lights too, *very often*.

THE LIGHTER SIDE.

- 1) Not many songs were heard - poor show.
- 2) Swearing was very restrained except in a few understandable cases.
- 3) H.M.J. managed to send a single acetylene lamp through the squeeze - the light remaining burning throughout.
- 4) One lesser horseshoe bat was found $\frac{1}{2}$ way along

5
The Primrose Patt. -

Finally many thanks for catering arrangements - But please
(if there is a next time) could the soup be heated more
efficiently & carbide lamps should not be emptied ^{that was a pity} into it!!
The flavour is rather impaired. - For full notes on cave working,
see "The Cave's Kitchen", by Phil Davies, in the W.C.C. Journal
for October 1955. A.J.M.

As A.J.M. was negotiating the ledge at the entrance to the
squeeze - Glacier & ledge were raved below - . . . !

Saturday, 10th March, 1956

Swildon's (Upper) Scavenging Party (Operation "March Here"). There
were two spelaeos (Olivier & Jeff. Fuller), 4 Winmax types & 3
from Sidest, who had cycled all the way for the occasion. The B.E.C.
sent their apologies, and those that did turn up did no work. Upper
Swildon's has now been properly cleaned as well as Lower Swildon's.
Party down about 2 hours altogether.

O.C. & G.F. ~~then~~ were then joined by Pat & Black Mike. The
Jont also turned up, but was unable to do any saving as he had
left his clothes in the Spelaeo Room & found them locked up. Comment
on this incident, both spoken & silent, was unanimous.

We went to Hill Grove & had a meal & then went on to
Eastwater, entering the cave at 7.35 pm. & reaching the Primrose
Squeeze at 8 pm. The rest of the story is told in the
previous Essay.
O.C. Long

Sunday 11th March.

Large party to G.B. Pa DP & KB working - 2 bangs & 20 buckets, rest pleasure. Guest day - 16 guests. TM set up record of 26 mins entrance - dig entrance.
C.W.

Sat. 17th March.

P.T., K.B., R.B., G.W., D.N., D.R.P., P.M., J.C.H., G.B., A.S.H., T.A.S., C.I. to Suddons and the Muddy Lump. After baling for 1½" both canvas buckets burst and the attempt was abandoned, the level having been reduced by about 4"-5" without an air-space being produced. The women members took the initiative and taught some somewhat surprised males how to succeed. In particular, on viewing the scum R.M. remarked "~~W~~ ~~S~~ ~~B~~ ~~W~~!" She was persuaded to take the first turn at baling, and after coming out from her turn she was cold and to warm up she ~~starting~~ started fighting C.I. After a few minutes of beating him up without effect she said "you're got more hardening than me" !???

Certain South Wales customs were not observed during this trip. K.B., R.M.
Transition - Consideration for the women!

Sunday 19th March

G.W. (as Master in charge of Manor Farm Dig) and C.I. (advising G.W. on what tool he would need) visited Manor Farm dig. The shaft is now only about 4 ft deep, it having been 15 ft deep last summer. The shoring is quite inefficient and needs restoring before digging starts. Two roads were found in the shaft and the "cave" was promptly named Toad's Hole.
C.W.

An interesting experiment on stream diversion was made in Longwood, the results of which we dare not witness. G.W.

Sat 14th March.

O.C.K. & C.B. to some of the risings along the S. Mendip border. On the way we visited the Cherteshouse mines sink. We found that the water sunk first near the uppermost reservoir, then it appeared again about 50 yds below, disappeared again after 20 yds, appeared again after 20 yds, disappeared again after 10 yds appeared again after 15 yds & disappeared after 10 yds. We decided it was rather difficult to decide where to dig. We then proceeded to Glencot via Wooley Hole where we met Luke Davenish. This rising there is a job for a slim devil - aperture is a fountain head about 5" in diameter. We then went to Westbury to look at the Hollybrook rising, & when we found it we could only insert two fingers into the aperture (scarcely). We then went to Rodney Stoke and found a respectably sized rising this rise guarded by padlocks & spiked railings. Got in and found a nice fault plane exposed. The entrance for the stream is 19" x 9" † or also an entry via a grating might be forced. We then visited a small rising & then came back.

† this should be entered to see what some thin is for a hair inside.

* A little fluorescein would help to show which water is which.

Monday 18th March.

A party of six D.T.D. Dr Savage, Henry, Harding, M.P. & C.B. to Brean to dig. Found a lot of ^{SMALL} Rodent bones in the pit and also some bones in the Lower Breccia (porre + reindeer.) P.T.D. also dug a pit in the middle of the beach (to trap motorists) C.M.B.

Sunday, 18th March.

Party of 3 HB, TRS., RH to Crook Peak starting from Cross quarry and walking over the Top. Visited various holes at the end by the quarry - including Dennis's Hole, Foxes Hole, Sandy Hole.

R.H.

Thursday 22nd March.

P.I.M. & C.I. to Swildons. Original intention of haltering wind after the 1st ^{cut} rump was ~~dis~~ ignored and ~~the~~ out to see if the trip "surface" → 2nd rump → "surface" could be done in less than 2's hours. The canoe was entered at 1.25 p.m. and the 2nd rump reached in good speed. On the way out ^{we} met a party at the Double Pits that was supposed to have started about an hour later than us. This made us cheerful. We were even more cheerful when we got out & found that the time was 3.5 p.m. Which, if my maths is right, makes 1hr. 40 mins. N.B. No swearing was heard. Is this also a record?

C. J. J. J.

Friday 15th March.

A party of six D.T.D. Dr Savage, Henry, Harding, M.P. & C.B. to Breaan to dig. Found a lot of ^{SMALL} Rodent bones in the pit and also some bones in the Lower Breccia (horse & reindeer.) P.T.D. also dug a pit in the middle of the beach (to trap motorite) C.M.B.

Sunday, 18th March.

Party of 3 HB, TRS., R.H. to Crook Peak Cross quarry and walking over the holes at the end by the Dennis's Hole, Foxes Hole, Sandy Hole.

Big Gorse Blaze at Burrington Combe

IN the famous Burrington Combe last night, firemen fought to stop a fire from spreading. It is estimated that 100-150 acres of gorse and grass were destroyed on each side of the Combe.

Fire appliances were sent there from Cheddar, Winscombe, Blagdon and Wrington. Personnel from Yatton and Chew Magna assisted.

Thursday, 22nd March.

P.Z.M. & C.I. to Swildons. Original intention of bettering round after the 1st rump was ~~discarded~~ ignored and ~~they~~ out to see if the trip "surface" → 2nd rump → "surface" could be done in less than 2 1/2 hours. The canoe was entered at 1.25 p.m. and the 2nd rump reached in good speed. On the way out ~~they~~ met a party at the Double Pits that was supposed to have started about an hour later than us. This made us cheerful. We were even more cheerful when we got out & found that the time was 3.5 p.m. Which, if my maths is right, makes 1 hr. 40 mins. N.B. No swearing was heard. Is this also a record?

C. Jones

Friday 23rd March.

About to retire to bed (early!) noticed fire on Burrington Common. nor saw from hut. + investigated it. We were reassured by Mr. Sayes that it would NOT jump the hut track! Half an hour later Blagdon fire-brigade and the President arrived - fire then increased about ten times. More fire-brigades arrived. ~~at~~ The 'flames grew higher & higher' and the President vanished into a sheet of flame across the hut track. We acquired two fire-brigade-type beaters and proceeded to the lower slopes of Blackdown to help cut off the fire. After much hard work assisted by technical spelaeological language. (the firemen were seen to blush), the fire was checked and eventually put out. Six fire-brigades were entertained to tea in the hut and 40 mugs of tea were consumed ('surely this is a record?')

P.T. and K.B.

Spelaeological Note. One fireman discovered a new pot-hole on Blackdown. (Smoke suddenly increased). P.S. Had all U.B.S.S. been present the fire might have been checked in the early stage. ~~But knowing the capacity for work of most members (see Sunday 14th March) this is probably unlikely.~~

P.S. Hut gas lighting showed a remarkable oscillation shortly after when we were retiring to bed for the second time (again unsuccessful). P.P.S. A PLEASANT AND WARM EVENING WAS SPENT BY ALL.

24th March. The GAS CYLINDER has been CHANGED.

C.B.D.

24th March. Party of 3, G.W. P.T., K.B. to Swildon's pit work in P.G. stream after a trench had been drilled. Howard Kenney & John Wedgewood arrived. Howard supervised further work and after the bang retired to a party at Wells leaving the 3 stakos to clear the debris. The floor has been taken back by about a foot and slopes at about 60°. A very pleasant trick.

G. W. Hs.

O.C. confined his activities to "surface work." Apart from transport & shipping this consisted of inspecting all the M.R.D. notices with the exception of Stoke Lane & G.B.. They all need repainting except the one at Longwood. That one, however, needs repositioning as soon as the woodmen have finished. They felled a tree on top of the notice & nearly buried it. I've put it rather further down the hill, where it is firmly lodged & can be seen.

O.C. Lloyd

25th March, 1956.

G.W. P.T. K.B. O.C. & C.A.W. to Manor Farm Dig. Dig out 40 buckets: clay to the E, from land-slip, Hask mud to the E. from flood-wash. Lowered level about 2' still out at bottom of old shoring. Then to Project Hole Back Door, where we removed branches & opened the entrance. The stream has cleared the bottom of this dig in a most satisfactory fashion. The big boulder is (almost) ready for a bang.

O.C. Lloyd

Borrowed for "Lat John's Case," by kind permission:

3 metal ladders (40', 35' & 20')

& the 3 barbins, 2 small shackles & 1 V. line attached.

To be returned in Easter Week after the whaling. Oct.

Ret'd 3.4.56, 35' & 20' metal ladders, shackles, V. line, 1 barbin. - A.P.P. O.C.L.
Ret'd 8.4.56. 40' metal ladder & remaining 2 barbins. Oct. With many thanks. Oct.

MENU - MARCH 25TH 1956 [Eaten by P.T. K.B. G.W.C. A.W.]

1st Course Tomato Soup + whole meal Bread

2nd Course Steak (Very tender)

Chips

Bacon

Mushrooms

Fried Onions

Garden Peas

3rd Course Fruit Salad

(Pineapple, Grapefruit, Plums (à la Truffe).)
(A.P.P. O.C.L.)

4th Course Coffee

Fruit Cake

5th Course Dessert (Optional) [Two members decided this was going beyond their C.C.'s and departed in haste.]

This was no Particular celebration, - just an excuse for a good feed.

K.B.

P.S. N.B. □ Table was used! This should be done more often.

26.3.56 OLL, EKT & K.B. to Longwood to hang
the boulder. Successful. Take a
sledge hammer next time. OLL.

26.3.56.

Walked to Crook's Peak via Dolebury - sidcut - Wincambe, returned via
Azbridge - Cheslar - G.B. (18 mls \pm 1) On the way a slight accident occurred
i.e. sliding down Dolebury camp. Tore a hole in the seat of my trousers, I
decided it should be sewed up since mura and knocked at various cottages. The
first place at which I got an answer was a bachelor establishment, but since he
was wearing a dog collar the plan was only modified slightly and I was able
to proceed with the minimum embarrassment onwards.

K.B.

THE DRINKING WATER TANK IS ONLY $\frac{1}{3}$ FULL.

27.3.56

Investigated Crack at the entrance to Whitcombes I with a view to a dig.
Removed 1 bucket. This dig is impractical because:-

- 1/. Difficulty in getting equipment there (without starting a landslide).
- 2/. Narrowness of the crack
- 3/. Floor is probably solid rock.
- 4/. Mosquitoes!

There is a small boulder choke at the end which may communicate with a small
pot in the floor of the main passage (which slopes upward).

K.B.

28.3.56.

Two To Gough's Old cave To remove Two boulders from the crack. The earth is now ready To be sorted.

K.B.

30/3/56

R.B. & J.E.S. to St. Nutholts. Arrived at Belfry three hours late & followed the main party down. Arrived at the "Dining room", no sign of life, decided that there was no main party. Explored part of "Rabbit warren series" & were joined by our official guide R.J. of the B.E.C. who escorted us to the bottom of the cave & showed us various points of interest on the way out. Trip took about 5 hours & the work was so dry that the entrance pit had to be climbed in our own time & lamps were not extinguished at the upper part of the main treasury was almost dry. J.B.

BREAN DOWN ? SIGNAL STATION EXCAVATIONS

Desmond, Trevor, Ap & Ted out & to Brean, ~~and~~ joined by Charlie. B - dug preliminary sondages (holes to you) into side of mound (T 343) found a little Romano-British pottery, home & to boozet in evening.

Saturday (also Rita & Johns, much fatigued by their previous exertions)

Trevor, Ted, Ap, to Brean, joined by ~~the~~ ^{Potters} family & friends, Desmond & the Roman curatress from Bath, & Charlie, dug a number of holes, discovering that the mound appears to be pre Roman & presumably a genuine Bronze Age barrow. There is also a Roman building of

late 4th century A.D. evidenced by much worked stone, permanent tiles
 & wall plaster, also several 4th century coins, down to "Minimus"
 about 25 mm diameter. Returned home to find remainder of
 Link burnt off, - now no further need to worry about fires!!
 To booze in p.m.

Sunday.

Usual 3 to Bream, joined by Charlie, Philip's lady, family & friends
 Located one wall of Roman building (& concrete floor)
 & found several more coins including a First Century A.D. stray coin.
 Visited by numerous generous members of the General Public, who
 misguidedly contributed to the excavation fund the sum of no less
 than 12 8 9 & 7¹/₂d less ~~more~~ necessary deductions for excavators
 welfare. Bream Down set on fire, the malefactors were
 intercepted by F.K.T., subsequently information was laid by
 the members at East Brent police station, resulting as it is
 understood in the aforesaid incendiaries having to change their
 trousers at Burnham police station. Home & to booze where
 private room monopolized by disorderly B.E.C. celebration. We understand
 that the nature of this celebration was such that R. Pope Esq.,
 on inspecting the ladies conveniences the following morning found
 a certain intimate item of female attire laid out to dry.

Monday. Bertie out. made intrepid descent of Southchurch with Blenke & family.

To the same damn place, joined by C.B. D.T.D., dug very
 successfully, our labours being rewarded by the ~~sum~~ sum of
 no less than ONE POUND TWO SHILLINGS AND
THREE PENCE HALFPENNY, two Roman coins & sundry archaeological

Rubbish, Breakdown again set on fire.

The purpose of the R-B building remains obscure, today we found a considerable amount of iron slag, but the presence of a stone walled building with tiled roof, concrete floor & painted wall plaster suggests more than a rough shack. The climate of the site (bloody winds) hardly suggests a dwelling. - A small temple or coastguard station remain possibility. - Good evening at Booger.

Tuesday.

Tot (later) Das, Ap, Philip Rahtz & family, George Boon & France, E. G. Graft & G.B.B. to Bremen, completed the dig of the Roman building. It is now evident that this is about 20' square or so, possibly with a rough kitchen extension. - It must have been much more comfortable than U.B.S.S. field H.Q. The finds include 18 Coins 1 Second Century, 1 Third Century and the remainder 4th century or. The probable date the occupation is ~ 350-380 A.D. As a result of our work it seems more likely that the building is a hill top temple than a coastguard station, though complete clearance would be required to solve the question. Judging by our results an excavation in August would probably bring in about ONE POUND per day. This thought is not without its interest. Cleared up & departed rejoicing.

A. H. A. P. Smith

April 7th.

Note. With reference to last Saturday's entry, RB - J.E.S. not fatigued by previous carry. Just lazy.

April 7th

GAS CYLINDER CHANGED.

7.4.56.

Party of 5, A.R. a brother, ASM, Shud Murphy and G.W. down August Hole. There was just enough water down August to make the approach to the Swing Pitch bloody misery. Stream in the Master Cave showed evidence of recently being a foot higher. - 4 hrs. - very wet

G. Witt.

8.4.56.

Shud Murphy, PSM, ASM, RTB, A.R., J.R., G.W. to Manor Farm. Approximately ~~100~~ 60 buckets removed. Shoring required in lower parts and top of the shaft - a large boulder needs removing. Mr. Peddies has kindly promised assistance with a tractor. Shaft is now 10 feet

G. Witt.

11/4/56 (3) Gough's Old Cave

Dug & sorted some material from 8th ft. of N/11.
A few bird bones (large bird) & some smaller bones.

G. Witt.

12/4/56 Brean Down (2)

Measuring section against cliff.
Filling in pit against cliff - G. Witt.

14th April. 1956.

"Working trip to GB, MB & RM, PIM, & Caw to dig at bottom of gorge. Looked at it, then laid plaster charge on projecting boulder. Bang then refused to go off. MB removed det, checked wire. Wire OK, so det eventually fired by combined effort of ~~the~~ Nip tx & dry battery. Then plaster charge fired. Very successful, no more boulder. Another plaster charge was tried on the thick layer of stalagmite near roof. On inspection, a small chip was seen to have been removed. Way on is 6" x 6" x 4" large.

— Caw. —

15 April 1956

Party of 6 to Manor farm, AR RM TRS PIM MB and president. Digging commenced after president returned to hut to collect forgotten pulley. One side of dig was cleared to avoid Kilby members, however MB succeeded in knocking RM out with bucket.

When dug to the last shoring (of Aes) the hauling contraption broke, and party returned to hut for tea. MB.

~~Party of 11 to S. circle of Priddy circles. Dug series of pits in interior to try to find any occupational level. Results nil.~~

~~Located what is probably an original entrance to circle 1 & also to circle 2. Preliminary test holes tend to confirm entrance for circle 1. Circle 2 not touched. For details see "Field Work Log" at present held by Ethel Roberts.~~

Sat. 21. April

A.R. CI, ASM, TRS, S-MB, GW to Manor Farm.
Mud removed from bottom of shaft and the official depth from top of the shoring is 11ft 5½ inches. Timbering and shuttering is required at the bottom of the shaft (Left Hand Side ofacing cesspool).

G.W.

AR tipped skirt - 4 tailful people - then left them at G.B. - leaving CI to console her. Party - EKT, PT, KB, OCL, CAW, MB dug in GB for 4 hrs - 8 buckets removed, 2 Bungs.

Sunday 22nd April

CI, ATM, BAC, GW to August Hole to sweep off non-existence of Black Hole trih. The air was thick in Fault Chamber and below (with rocks) (with smoke). On retreat some naked MNAC were encountered, a damp trih.

G.W.

Sunday 22nd April, 1956

5 to work at back door to August hole: 3 worked (see TRS & P.M.C.L.) Shattered the boulder which was banged on 26.3.56 and removed 30 buckets full of rock etc. There is now plenty of digging to do before the next bang and it is dry.

After lunch to Read's for some gardening of the entrance. This entrance will never be safe, but nothing more can be done about it. On the E side there is a lot of rubble waiting to come down, but it should not be

brought down by hand (a) because of danger to anyone attempting to do so (b) because one never knows how much bigger stuff may thereby be loosened.

signed

Saturday, 28. April.

Party to Stoke Lane. ~~C~~ Chris forgot boots so had a later party (see below). AR, DP, ASM, TRS, GW went through the sunk and visited Main Chamber and Streamway. - then through Bone Chamber into Throne Room and via Traverso to Main Chamber. Refreshment was taken with the later party and the above 5 left. - 3 hor.

G.W.

KB, P.M., C.I. in later party, latter now complete with boots. A shalaguna column ~~was~~ was noticed with two perfect mice on it - hence the name Michony-Dickony (Heck Dick Porahab). A most miserable trip was enjoyed by all.

C. Queen

29/April. 5 to Manor Farm dig. C.I., ASM G.M.B., Spud Marley, G.W. The dig continued now following the rock roof down at an oblique angle, shoring was placed at the bottom of the shaft. Timbering has started at the top - sheeting needed now from Rhino.

29/APRIL. T.M.O LISTER - N.J. HOUSE G.M.B. & A.J.M. to G.B.
quick road trip. The latter 2 then went to Manor
Farm. The former returned to Bristol

A.J.M.

Sun. 29 April 1956 Party of 11 to S. circle of Priddy Circles. Dug series of pits within perimeter to determine if any occupation area - nil found.

Located what is probably an original entrance for S. circle & also for next circle to N. Trial borings in S. circle tended to confirm site of entrance. For details see "Field Work Log" at present held by M. Abrahamian
 R.H.L.

Saturday 5th May, 1956

Tony Morrison, Brian Colbyridge, Trevor Shaw & Oliver Lloyd to Stake Lane on "Operation Mock-a-flo." Object: to see whether the divers' a-flo would go through the sponges (in particular the Matony Grotto) and to see what sort of an underwater opening there was for them in Sump II. An a-flo was mocked up to the dimensions of John Preston's a-flo (29" x 9" x 8") arranged in such a way that if it wouldn't go through the N.G. a piece could be taken off it, so that it was the size of Oliver's "Vello" a-flo (29" x 9" x 8"). We found that the entire mock-a-flo would go through both the sponges, but it was a near thing at the N.G.

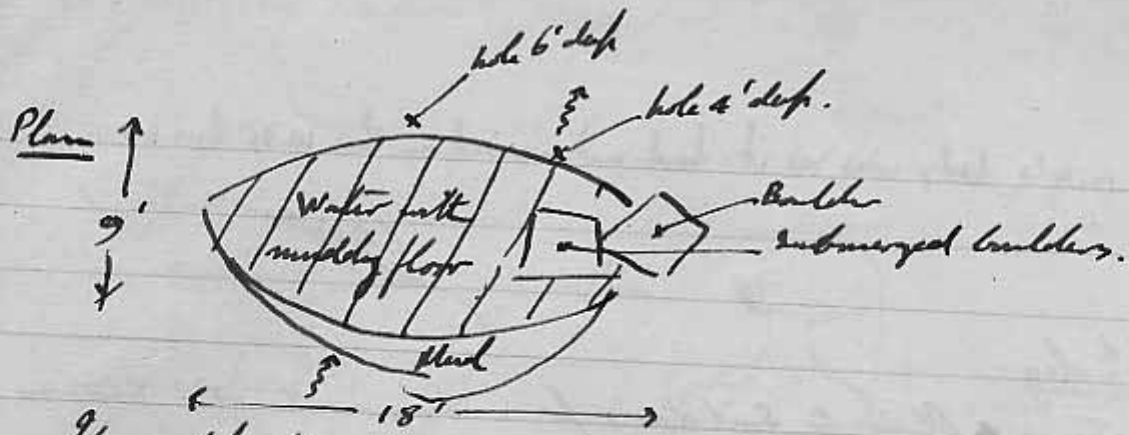
Inspection of Sump II should something like this:

Elevation
 looking downstream



Hole about 6' deep,
 3' wide, too narrow,
 probably would go

Hole about 6' deep,
 3' wide, 2' deep,
 Probably the way on



It would appear from this that the hole 4' under the water is the way in and that the divers will be able to get into it on Sept. 1st!

We decided to take worksheds out of the cave with us, rather than have it there as rubbish, but ~~the~~ it disintegrated on the way, a piece 9' x 8' x 9" being all we eventually removed. As Brian said, "they can find their way now by the bits of wood left behind." We ^{buried} ~~buried~~ the fragments after our return to the hut, chanting the names of all the nasty bits of the cave as each piece went into the flames.

O.C. Lloyd

Sunday May 6th.

Concentrated work at Maas Farm by C.F. G.B. & A.J.M.

Started at 12.30 and worked with only 1/2 hours break until 6.30. Shaft 14 ft deep. 20 buckets removed and shoring at top completed. A.J.M.

Sunday 6th May. At 1 minute ~~after~~ after midnight C.Z. descended with (in shirt) G. Witt into the stream passage of Reads cavern. He wondered

where exactly G. W.'s body was as it had not arrived on the 10.35 bus as expected.

~~C. J. W. W.~~

Saturday, 12th May

Chris, Trevor & Olivier to Suid den's for a bang in the P.G. Stream. Newly sharpened star drill worked fine at first, but after completing the 10" hole (5" already done last time) it was found that a piece had chipped off the tip (? bad temper). So we only did one bang, but it was quite effective (about 10 buckets).

On the way down we came across some most unusual tackle. There was a stout rope on the 20 with a pulley & double life line, but only a short ladder (very thin rungs) and a little pulley & thin line at the bottom. Evident by they thought they were going to do Suid den's with only 40' of ladder. At the head of the 20 was an entire meal, with plates, waiting; another life line on the 20. But the prize spectacle was on the second double jet; they had evidently read Balch, for there was the aerial rope! It got awfully in the way. Chris tried using it on the return but it made him fall in. At the lower end of Barnes' loop they had put the maypole (usually kept behind the tower capped pillar) to slither down. We met the boys, 4 of them (from Worcester) between the last two jets. One was wearing a turky hat, & they were all soaking wet. I have seldom seen the cave so dry, so I asked them if they had been sunbathing, but they didn't know what that meant.

Measured Suid den's loop for bar & pulley. 2' 8". Very

awkward to work there, but could be done, if adequately supported.

Section



Plan



water not reaching to opposite side today.

15' lift

Anyone being pulled up by pulley in such a way as to avoid all lifts & projections would be sure of a working.

P. J. Lloyd.

Sunday 12th May (Just!!) Party of 6 (A.R., G.W., I.R.S., H.N.J., D.R.S.A., F.C.C.I.) to a miserable (horrible) object - a lovely little hole called Dickote. A quick ^{trip} down to the bottom of the well was followed by a slower journey out. The start of the slowness was due to the party enjoying the contact of G.W. trying to get out of a hole smaller than himself (impossible?). After that H.R. enjoyed a cold bath and this was followed by a bit of courting, G.W. laying the trail, C.I. being the hare and the mob keeping at being a pack of joyful hounds. Or was it due to his bohemianity that the said mob seemed intent of getting specimens of every bit of his clothing. He came to the conclusion that Dickote is painful in the man-wide state

C. J. Mason

Sunday 13th May.

A.R., A.B., C.I., G.W.B., A.E.M., P.M., G.W. to Manor Farm dig.

3. bangs - 93 buckets removed. 1st bang took 1 1/2 hrs due to faulty cable cable. The shaft is about 15 ft deep and is

solid rock on 3 sides. South side shows narrow water worn rift
-digging fairly easy.

C.W.

Sat. 12 May Party to Bagpath Burial circle.
With aid of levers, rollers + rope shifted aside
one large stone + started investigation underneath.

Sun. 13 May Poiddy Circle (S) Pit 24 traces of
another layer at base - P. occupation.

Bored 3 holes in presumed entrance. Hole at 70 ft
from water tank natural at about 3' = bottom of ditch.

Holes at 60 + 50 ft natural at about 1' = causeway.

For details see Field Work Log. *HW*

Tues. May 15th Plumbing operations old
supply connected to basins. The hot tap is
there to mislead you.

Caravan lower door open. No key
available to lock up with *HW*

Saturday, May 19th

G.B. Great day - the last of the "old-style". Visitors from N.W.R.C.,
Wessex + Hereford, 18 in all. Revenue 20/-, a satisfactory afternoon!

In at 3.15 pm, struggles out at 6.30 pm. Spacious present included the
President, ^{Mr. G.H.B.} G.H.B., K.B., Gick, D.P., + one more at present sewing in H.M.F.

D.P.

Sunday 20th May : Oct. Keith Evans, Peter et al. to Goatchurch
at 12.05 am. Back to bed at 1.15 am. *rel*

Sunday, 20 May. David Hughes & G.M.B. to Goatchurch in
morning for a wander round. stayed down for abt. an
hour. *G.M.B.*

Sunday, 20th May P.T., A.J.H., G.M.B., D.H., E.K.T., Peter Taylor,
to Manor Farm dig. East side has collapsed raising floor level
about 4ft - annoying - about 50 buckets and E. side of road (?)
temporarily. It is obvious much more work has to be done
to make this side safe before the dig is continued.
G. Wills.

Sunday 20th May 1956.

~~Keith~~ Lloyd, Kate, Keith Evans & David Preston to Back Door August
Hole dig. 100 buckets in 3 hrs. actual work. Still some more
loose stuff to come before a bang is necessary.

The woodmen felling Long Wood obliterated the main
entrance to Long Wood & August Hole a day or two ago. The
M.C.G. started digging it out yesterday & the work was
finished by some Essex boys & our party this morning. It
is not yet tidy, tho' moderately safe; it seems inevitable
that more rubbish will be brought down when the remaining
trees are dragged away, & we shall have to dig it out
all over again.
Oct.

Sunday 20 May 1956.

Initiated D. Fitzgerald in the delights of Mendip Underworld; to which
Rods Pat & Bath Swallow. 4:0 pm - 6:30 pm. *B.R. Callaghan*

Sunday / Monday, May 20th / 21st, 1956

OL & KME accompanied the rumpers in building as far as the P.G. Stream & drilled a hole. 2 1/2 hour trip; 2 1/2 inch hole.

OL.

Sunday / Monday May 20th / 21st, '56

A party of P.T., D.H., D.P., K.B., P.I.M., C.I., M.C. followed by a "working" party of R.R., D.A.S.R., G.W., H.J.M. went down thro' 1st ramp where people on their 1st ramp put on a comedy show for the more initiated. After this the bigger party trotted hepfully to the second ramp and back, after then up to the Bleach Hole. C.I. then attempted the traverse, but on getting to the difficult part the bone god swilled some water thus blinding out his light. He retreated to the top of the climb to see to his lamp and the bone god struck again. In quick succession he threw a ~~stodge~~ ^{lamp} hammer, a helmet and a tin of cambide to the bottom of the Hole. C.I. went down to retrieve these. The bone god, having started to enjoy himself then tried to throw C.I. off the ladder, but, more seriously, he then cast a molochy onto P.I.M., being a mixture of nausea and exhaustion. He was got out with all speed and then the rest of the party followed out. The god had claimed two more lumps in the ramp, and even followed the party out of the cave and bucketed a ~~bit~~ type on D.A.S.R.'s cap and then ~~ruined~~ ruined the top type blower-upper. Why does bone god kick on U.B.G.S. every time?

C. ~~James~~

P.S. The "working" party looked at a couple of squeezes in the May Day series, and quickly retreated after said C.G. resumed the squeezes up like vices.

Monday May 21st.

The G.C. was awarded to 4 members (see list of interests) for known g.a's.

Saturday 26th May, 1956

K.B.

A large party down Guilden, including The President, Oll, Chris, Kath, Tony, Geoff Gill, Peter Mel & Peter Taylor, Andrie, Harding, together with Marcel & his coach, came to work at the P.G. stream, some to admire the night. We finished last week's drill hole, packed in 1/2 lb. of gully and let it off (3rd shot!): quite remarkably effective. Chris & Kath used time to the bottom & made it in 20 minutes. The return journey took an hour & 25 mins., owing to congestion on the 20. Whole trip 4 1/2 hours & very pleasant. Chris & co. froze about in the camp & recovered Andrie's light, lost last week; Geoff, Chris & Kath went through to Sample II, just for the light. Andrie ~~fell~~ fell into the double pit on the way home, & so did Peter Taylor. Kath took Geoff up as far as the Blackst Pass.

Oll. A good jumping 'triv!! A.J.N.

Sunday May 27 1956

Two to Priddy Circle. Dug rest of hole 24. For details see Field Work Log.

Returned to hut 1720 hrs. left hut hurriedly at 1750 hrs to help with biggest hill fire. Large areas of Rowberrow Forest burnt.

EHF

Saturday 2nd June '56

OCL, DTD, GW, BRC to Luke Devenish's at Bridley. After some delay collected hules, and proceeded to mine shaft at Bridley Road Farm, first descended to a depth of 70' by DTD on 29th May. Hand Rover backed up to mouth of shaft & used as a daisy.

D.T.D + OCL descended & inserted an extra 40' length of ladder in the 75' left by Devenish on May 29th. OCL then descended to bottom of shaft, - ladder only just long enough, about 5 rungs to spare at the bottom. He reported a passage leading off to the S. DTD then followed down, then GW. After OCL had ascended BRC came down, and while he and GW were down in the passage a mild collapse of roof occurred. This was of material stashed up by the miners, alleged to have been disturbed by OCL in an abortive attempt to follow a roof fissure. The roof fell on GW who fortunately escaped with both life and limbs comparatively intact. GW then ascended to the surface and SR, who had meanwhile arrived, descended to the bottom. SR and BRC then returned to the surface and retrieved the ladders.

The total depth was estimated as 105'-110' as the ladder lay, a little less vertically below surface.

The first 11' of the shaft was circular, 2'6" diameter, lined with dry stone walling. One then entered a natural fissure running approx. N-S, and at a depth of 30' it was possible to step off the ladder to the N, where a small shaft reascended towards the surface about 10' N of the main one. It was choked above & unsafe to investigate.

The descent continued vertically for about 20', and the fissure then sloped down steeply to the W, at an angle estimated to vary between 60° and 80° to the horizontal. It continued like this for about 60' to bottom.

At the bottom the same fissure could be followed, S, evidently opened by removing a vein from it, for about 50'. It then turned slightly W and continued for another 20'. End at a small pool containing bones of 1 sheep. To the N the fissure was blocked.

The main shaft may have been partly air-filled when broken into, but was probably made by excavating filling of clay and stones which remained in position to N+S of the shaft itself. The passage at the bottom, one on S side about 30' above bottom and probably others had been formed by the removal of veins. Much evidence of rope-hauling was noticed, in the form of grooves worn into the barboniferous lgt. by the ropes.

Some receptacle such as a leather bucket must have been used and it is possible that it could be hauled the whole way up from the mouth of the shaft. At the top of the sloping part a chute of rectangular section had been cut in the foot wall where the fissure would have otherwise been too narrow. Tool-marks were observed in the calcite veins in the roofs of the passages. Shot-holes were present in the south passage at the bottom.

The whole system evidently occupies a steeply sloping fissure in the Carb. Lst., running approx. N-S. and partly mineralised. All the mineralisation was probably removed, and the worked-out parts ~~of~~ filled with spoil. To the S of the shaft were surface indications of at least 2 more shafts on the line of the fissure. There was no evidence of the mode of descent (or, at least, of ascent) by the miners, and it is possible that one of the other shafts was used for the purpose.

After the investigation was concluded the shaft was filled with the aid of the Devonish bulldozer.

It was agreed by members of the party that hand-mining must have been a ~~very~~ awful occupation.

J. J. Donovan

Sunday 3rd June 1956

Carbide for Ireland.

I have filled 2 small tins & 3 nescafe tins with carbide for use in Ireland. The amount thus put on one side is 26½ lbs., which will be enough for 10 people carving for rather more than 5 hrs. a day for 12 days. 1 lb. carbide does 8 fills at 3 hrs. a fill.

M.R.O.

Have collected notices from Goat Church, Rod's Pit & Peck's Cavern for repanning.

o.c.

Tri June 1st

Charlie, Mick & Treat to Devon. Pitched camp by Dart, in rapidly failing light, at Black Rock Guest House, Buckfast.

Sat. June 2nd

Charlie not so well - had been "on the run" all night. All three to Baker's Pit cave where joined up with other members of C.R.G. Mick, via human ladder, investigated the hard way a roof passage but came out the easy way.

In evening C.R.G. meeting. Papers by D. Sweeting on "Karst of Jamaica" illustrated by some remarkable slides of the type of limestone formations. A long discussion followed. D. Hewes then gave a paper on "the

characteristics of cave fauna". This was again followed by a good discussion. D. Tratman then spoke briefly about work of U. B. S. S. in Clare + the U. B. S. S. map was exhibited. (A gasp was heard when the Doolin cave was mentioned with its entrance at 35' above sea level). Films were shown of caving in Devon. Thence to dinner at camp.

Mushroom soup

Grilled steak, Potatoes.

Fruit, Cheese.

Back to Devon Spel. H.Q. for light refreshments + lantern show.

Sun. June 3rd 1956

Nick + Trat on party to Pridamsleigh cave. (Charlie returned sick to Bristow!). Taken a Cook's tour à la Hooper (♂) ending at lake after going round almost all available loops. To intense surprise + perhaps indignation (wait for next Devon Newsletter) U. B. S. S. demonstrated how to swim across lake. Photos taken.

Afternoon to Sutcliffe's dig at Tor Brian. Warm fauna in gravel infilling. Turned in wet. Back eventually to camp - supper - beer at ~~the~~^a local (There are now only 7 locals surviving out of 13 some years ago).

Mon. June 4 - Return, rather wet, to Bristol. Off
 Sunday 10th June, 1955 - Mended fence round
 Bath Swallet in morning. Lunch Goatmarsh
 in briefs with Geoff. Fuller in afternoon; no
 significant scratches; lovely & muddy. etc.

Saturday 9th June

K.B., P.A.S.R., G.W., C.Z. to "Colin's" old of P.A.S.R.'s, situate in
 pleasant surroundings, town with one back garden in Broadford-on-Avon.
 Vertical rift, about 50ft deep. Suitable for small numbers with cast iron
 backs to resist falling ceiling. Structurally unsafe. Balans small. All modern
 conveniences with cold running water, good for the complexion. Known from
 hence forth as Granny's Gulch. Added attraction - excellent rock garden
 around front door.

h. J.

Sunday 10th June

PT, KB, G.W. down August Hole - explored
 wet and Dry Galleries upstream - found 3 possible
 Maypole Pitches - all ascending to surface. Trouble
 experienced in shaft on exit due (a) general instability
 & (b) a very undependable T.D.

Returned to hut feeling wet & tired at

2am 1:30am to find that certain members had mysteriously contrived to consume most of the available food and all of 4 pints of milk and gone to bed without washing up - BLOODY INCONSIDERATE

Amendment.

Two members were very considerate & beans on roak & black cocoa were served
G. Wills.
P.T. K.B.

Bob Worboys, Laurie Scott, & Mike Allfield (3 members of the U.B.N.S.) & A.J.M. down August Hole Sunday 10th June. After clearing a number of tree roots, logs & boulders from the top of the langwood shaft a quick descent was made. August proved to be very dry, and an enjoyable time was had by all. 4 hours down back at 10 AM. A.J.M.

Wednesday 13th June

GW, KB, GB, CAW & 5 guests down GB on the Union Week trip. MB & RM down earlier to fix Tiller's. A pleasant, leisurely trip, - all lights working at end (save RM's) - probably a record for Union Week. Split up on way back for Wet Way, Dry Way & Ooze. Wet Way party returns out by Dry Way after dropping RM off chain just before Devil's Elbow. Extensive shattering probable - but not of RM. Ooze party - 3 first-timers

Very little rain - and, what call that a squeeze?

5 guests returned to Bristol in lonely state in the coach.

Evening drives routes to Plume tried at speed.

Record: 10 mins by Brian, via Rock of Ages & then by road.

14th June. Party left for Yorkshire. Dormobile loaded to gunwales - no back wheels visible.

CW & DIM on a thumb & a prayer.

CW.

Thursday 14th SW. & Janet Priestner to Reado & Rods - pleasant excursion. left c 6.30 in heavy thunderstorm

Saturday night, 16th June, 1956 Keith Evans, Malcolm Lewis & Chris Lloyd down Big August Hole, 8.45 pm to 12.30 am on 17th. The trip still wants clearing of mud. Heavy rain made it interesting but not very comfortable; the water makes just off start of the entrance. Explored the upstream passages, for a change. We feel that it would be easier to get Jerry down there than his Maypole.

SC

Saturday 16th

Met party of 4 Southampton University mountaineers at hut. Then these + SW & CAW proceeded to G.B. with selection of keys obtained by burgling President's house. No key fitted. So did quick Read's Grotto (Quote: "Are all these caves like this?") Then to Goatchurch.

Meanwhile four camp-followers, ^{of SW's team} had arrived at hut & then followed down Goatchurch & with CAW who was "guiding". Went down coal chute by mistake! Did every awkward bit of the cave then returned.

In evening got to Plumbe with only 5 mins to spare.

CAW.

Sunday, 17th July.

CAW & SW went to look for W. Twin earthworks the elusive quadrant. Located this, or at least on a crescent-shaped bank, +, part of the way, a very shallow inner ditch. Very faint, though. Other, straight, arm shown on air photo quite indistinguishable, as broken not completely burnt off. Arc length, spaced at 114, radii 63, 67, 69. (100 paces = 110 yds). Radius shown in Proceedings Vol 6, No 1 is 65 yds.

CAW.

Sunday 17th July.

Took 6 Southampton mountaineers $\frac{1}{2}$ way down Σ alley
K.S.T. E.

Royal Enfield motor cycle in cycle shed left to be collected later (N.D. it doesn't work.) P.M.

Saturday 17th. The party of Southampton mountaineers mentioned previously after climbing down Resdes, continued to Balk Swallet - could NOT proceed further than end of the massive cavern on far side of the "Rommelabout". Continued to Rodd's Pot which was well worth the trip, although it seemed to continue indefinitely. Three then ventured down "Drunkards" but were not suitably disposed.

JOE G.A., C.B., R.M., T.S of Southampton

P.

Many thanks to U.B.S.C.

Away trip to Yorkshire Thurs June 14th - Mon. June 18th.

12 members - E.K.T., C.I., A.S.H., B.R.C., K.B., G.H.B., in dormobile, T.R.S., M.B., R.H., P.I. in case and P.L.H. and G.W. 'on a thumb and a prayer' to Yorkshire with the main object of visiting Gaping Ghyll, Ingleborough. On arrival at Settle good relationships between U.B.S.S. and B.S.A. were established by various social calls in ~~Settle~~. As the camp site was at least 1 1/2 miles from any civilised road, it was decided to hire a tractor from Flatt's Farm, Clapham to carry equipment to camp site. Camp was set up at a suitable distance from the entrance (in case members with a tendency to sleep walk wandered too far). A.J.H. & C.I. ~~set~~ off with Dormobile to look for P.L.H. & G.W. but returned unsuccessful at 12 pm

The next day P.M. & G.W. rolled up just in time for breakfast after an energetic journey from Bristol and a nice long walk over Ingleborough in search of the camp site. Two parties visited G.C. via Bar Pot entrance. The first party consisted of E.K.T. (who retired gradually at the entrance squeeze!) R.H., T.R.S., H.B., B.R.C., G.H.B. Two pitches 40', 115' were descended. Various parts of the cave were visited - Hair Chamber, West Pot, East Passage, Mud Chamber, Stream Passage, Sand Cavern. On the return journey the top 40' of ladder was found to be in bad condition - at least five rungs having slipped, so 20' of B.S.A. ladder was lowered to cover this section of the ladder. Trip lasted about 4-8 hours.

Saturday - it rained! Breakfast was cooked in pouring rain over one primus and morale was generally low. To amuse the party A.J.H., G.W., & B.R.C. were aroused from sleep and exposed to the elements by the simple method of lowering their tent about them. Whole incident recorded pictorially by E.K.T. - unfortunately minus sound track! Social shopping calls in Settle & Liggleswick were paid by T.R.S., H.B., R.H. & G.I. E.K.T. Mass visit under compulsion of thirst & hunger to 'the Flying Horse' & the fish & chip shop, Settle. Peter Sandall B.S.A. arrived and a darts match to settle the age-old White versus Red rose controversy took place between him and one ladie from Lancashire. Return (except for G.I. who preferred to sleep in Troutdale) to camp in rain and darkness. Rest of party to de-ladder G.C.

Sunday - slightly less rain. Parties to Ingleborough E.K.T., T.R.S., H.B., R.H. & Peter Sandall, and White Scar & Naked Man. B.R.C., A.J.H., G.W., G.H.B., P.T., K.B., P.M., G.I. Film director Tratman took more shots of various members beginning

to climb down the C.G. entrance shaft on a 60' ladder. An impressive view of the entrance pit was obtained by those who went down. After supper camp was struck and all equipment moved to Settle by tractor & heavily laden Speleo vehicles. All the male members of the society spent the night in the B.S.A. Hostel in Settle the women members having to content themselves with the dormobile (and very nice too!) In the evening members visited local pubs, children's playgrounds etc and collected one or two souvenirs of the visit! TRS, CI on Social Call to Bob Leakey Ex-BSA, EKI to visit E. Simpson.

Monday - members got up only 1 hour later than schedule and left Settle at 9.30 in the same way as they came up. Drove party home by 5.45, TRS party by 8.30 - P.I.M, G.W. presumably still en route!

A.S.H, K.B, P.T., R.H, M.B, C.A.W. spent night in hut.

NB. Vast quantities of bread should be taken on any future trip where camp is likely to be miles from civilisation.

RH.

Tuesday 19 June. 07.00 hrs. G.W. P.I.M no longer en route -

- "into the would-be 'itchers"
- (a) Don't itch between Shapwick & Choster.
 - (b) Don't 'itch' the A4 in rush hour.
 - (c) A4's quicker by F.B.

Yorkshire II.

Friday - K.B., P.T., C.I., A.J.M., G.W. comprised second party down Bar Pat - proceeded via S-W Passage to Main Chamber to admire the view - thence via Booth Parson Crawl (twice - due to omission of passages from plan) to East Passage and Mud Hall. C.I. had to be extricated feet first after an unsuccessful attempt to force a squeeze. Retreat was organized in good order - several members falling asleep below the 110' pitch.

Saturday. K.B., P.T., B.R.C., A.J.M., G.W., P.I.M. down Bar Pat again. - straight trip to Mud Hall where rope was collected. - then back to stream passage to descend a pitch - unmarked on survey, found on previous day by B.R.C. Unfortunately 35' ladder was 10' too short and B.R.C. was unable to reach the bottom. The cave was then de-tackled and the 40' ladder on the 110' pitch found to be so in a very bad state.

Sunday. P.T., K.B., A.J.M., B.R.C., P.I.M., G.W., C.I., G.W. to settle for lunch in the Olde Masked Man - were a fine notice from local boozet. - Then via Malham Tarn to White Scot show cave - interesting but not spectacular - on way out the best rendition of the Bachelor's Song was given by members who sang like a for encore. - Home after for supper.

G.W.

Tuesday 19th June.

P.T. K.B. P.M. G.W. Retired to Bristol for a much needed bath!
This was followed by a visit to the "Somerset" before going to see
"Lady Precious Stream" which was enjoyed by all.

Wednesday 20th June

* Lazy Day: Various visits to Dalebury and Rowlesmead followed by
"Planning." The singing was enjoyed so much that only one
member drank more than $\frac{1}{2}$ pint!

Thursday 21st

The F.B. was washed and discovered to be a
genuine BANG BANG BANG. It even has a number plate.
Lunch was taken with the President. K.B.

* A.J.M. was "got up" by the female members present (P.T. R.M. K.B.).
Unfortunately the bath was nearly empty and we had to content ourselves with
pouring a bowlful of water. He was TOO SHY to emerge from
the sleeping bag & retaliate. The operation was successful due to the
use of coordination instead of organisation. K.B.

Sunday 24th June (St. John the Baptist's Day) 1956. This Dept, with Evans and
Robert Worley & Mike Koper of the Wincor fitted a 2'8" iron bar with hole
for pulling over "Sincide's" leaf, as suggested in log note for 12th May.
& has trip, very satisfactory. It is a permanent fixture & has been
cemented in place.

N.B. Lake drained has the pulley fixed on.

Old.

Sat - Sun 30th June, 1st July, 1956

Fixed 6 M.R.S. notices, some repainted, some new: Goatchurch, Slat, E. Twin, Rod's Pt, Dromkard's & Read's. Cut a "epilacodendron" for the notice post at Rod's, in the hope that it may grow there; the other five already have trees at the entrance, 3 elms & 2 hawthorns. P.C.

Sate Saturday + Early Sunday, 1st - 2nd July

E.K.T., P.T., K.B., G.W., A.S.A., ~~P.C.~~ O.C.L. + C.I. to watch + help (?) diving at Wooky. All went well until D.S.R. joined the "party" about midnight, He + C.I. joined O.C.L. in a trip to the upper passages where O.C.L. collected but demy. D.S.R. + C.I. took the opportunity to have a look at the back door to Wooky. On the way back D.S.R. dropped his candle - into an old jackdaws nest, this promptly causing a nest conflagration. Although C.I. thought he had extinguished this, it restarted after they had - rather opportunely - left, and completely smoked out Wooky Hole. So much so that divers found it easier to come out still using breathing apparatus. Lights were useless, Afla headlamps not being visible at 3ft.

D.S.R. + C.I. were subsequently banned from the upper passages for the rest of their natural days.

b. g.

Tuesday 16th July.

C.A.W. + C.Z. collect rubble from Manor Farm. Due to subsidence there is now a bigger shaft outside the shoring than within it. The mud from this naturally occurring shaft is filling the ~~most~~ main mactons up very nicely. The latter should soon be of negative depth. They then went to C.B., leaving without penetrating this hole as the keys could not be fitted to the locks

c.f.

Thursday 5th July.

Irish party left at 0930 hrs! CDW escaped from Mrs Wooley & cleaned up hut. Also did washing up. This had apparently been accumulating since soon after the New Year Party.

NB We had NO tea, & NO milk on our porridge; milk alleged sour. You parboiled, parboiled, half-baked misbegotten sons of darkness - there was, NOTHING wrong with it. - just a lovely thick layer of cream on top. So this evening, when ~~the~~ what I left had gone sour, I had the doubtful pleasure of pouring away what had been a pint of fine Jersey milk.

Friday.

Went home.

CDW.

Sat. 4th August 1956.

2 chooks (1 small) toward for Cuckoo Clever. 02h.
Returned 19.8.56.

CDW.

Monday 6th August

Borrowed from U.R.S.S. for a fortnight's:

- 1 pinnac
- 2 pairs + frying pan
- rug and 2 plates
- tea cloth

AR

Returned, 19th August.

AR

Saturday
~~Monday~~ 4th August

Party of 4 down G.B. (including 2 guests)
Took 3 colour photographs, successfully
it is hoped.

Met Oxbridge party down cave. They had
had difficulty to lock because inner lock
was on outer door, inner door unlocked
& unclashed & outer padlock was found
on roof of entrance pill box.

? who was responsible. Enquiries
to be made. AM

Sunday 5th Aug (4) Priddy circle. Continued
clearing "causeway" down to yellow subsoil.
Stoney layer & gravel in S.W. corner of trench
(Details in field work log). AM

Mon. Aug. 6th (2) Priddy circle. Continued
work of Sunday. Edge of ditch probably
located. (See Field Work Log). AM
(Found 1 compass to Taylor's)

Sat. Sun Aug 11 + 12

(1) + (3) Priddy circle. Continued digging
Proved no bank across causeway & found
1 foot hole. (See Field Work Log) AM

Sunday 19th August

Gas cylinder changed and changed regulator.

P.I.M.

Sat. & Sun. Aug. 18, 19th 1956.

S. Circle Priddy continued digging of causeway entrance. Marking out ditch well defined. Large stones in primary in-filling - possibly covering burial. Details see Field Work Log ~~etc~~

P.I.M., Ann Fitzgerald and AR to Reads at 10 pm - "Pleasure" trip and introduction to caving for AF. and ~ 12 pm.

AR

Monday, 20th August

~~From~~ AF and A.R. to Q.B. - enjoyable trip - very little water in streamway. C.S. arrived to stay for 3 weeks.

AR

Tues. 21st Aug

Digging at Priddy S. Circle. Measuring up done ~~etc~~

Tuesday 20th Aug.

Being fed up with supplying food for 2 months, writer sets 3 mousetraps

69

Wednesday 29th Aug

All 3 traps sprung, all 3 bits of bait missing BUT only one mouse. "Daily Mail" is paying £500 for the first all-correct solution to this problem!

C.F.

Fitted window in end of caravan. Reset mouse traps.

C.F.

Thursday 30th Aug.

And another mouse bites the dust. Reset traps.

Friday 31st Aug.

Mouse population again decreased by 1 unit. Reset.

Saturday 1 Sept. Mice become antisocial & refuse to handle of the food offerings daintily set before them.

Took Peter Seabome down goatcreek in afternoon to introduce him to the joys of underground adventure. Penetrated through to the end of the foot Drainhike extension with no real difficulty.

Sunday 2 Sept. 0100 hrs. G.W. + B.F. down August Hole where they got as far as the bottom of the swing pitch. Until then the cave had been very dry - B.F. had difficulty in finding water for his lamp. However something must have burst for in (literally) a space of 5 seconds, as they watched, the Swing Pitch was transformed into a raging torrent. They bravely attempted to clear out, leaving a bulky camera box at the bottom of the pitch. They expected to find the tunnel full, but in fact the water was mostly coming down the Eocene route. They set up with it again above the 10' and found the W-squeeze completely awash. The only drinkable remark about the shaft is that it was wet!

When they eventually got ^{to} the top of the shaft they found that the streambed, which was dry when they went down, wasn't deep enough to take the stream which was swirling down the track.

N.B. A Black's 1000 lb nylon rope ^(line) was used on the 10' - and it snapped under the weight of v.w. Need more be said.

to go on.

Sunday. 2nd Sept.

A.J.M. D.C. & P.M.

Shoot trip down G.B. - place crowded with W.S.G. & other assorted birds!!

A.J.M.

Monday 3rd. Sept.

Cleaned out hut. See 20th Feb. Need more be said?

Tuesday. 4th Sept.

C.G. & G.W. returned to August Hole to collect camera etc. Stream had subsided somewhat but the longwood entrance was still very wet & miserable. The photographic box was retrieved & found to have shifted laterally 4 yds. Flood deposit was found on the roof of the low passage beyond the tunnel. Quite pleasant 1½ hrs.

G.W.

Wed. day. 5th Sept.

A.J.P. & Alan Coll. (member of the UBSS party at Hillgrove at Easter) up from Tanta.

good hotel. 45 mins.

Short trip down G. B. - back to the hut by. 1.30.

Table fee 1.1/- placed in Hut levy box.

A.J.P.

Sat 8th Sept. b.f. thankfully leaves for home. He would like to note that the weekends, with company, were pleasant; but the weeks, without company, was really boring. b.f.

Mon. 10. Sept.

P.T. K.B. G.W. returned from L. Salisbury to thaw out and dry out. - Mice again in residence - send for the M.R. O.

Tue. 11. Sept. Collected 1 drum tar from Gerald for tarring hut (a feathering woman) but too wet to use same.

NAR.K.# - plug flying!

N. B. (O.).

95.

"The Society's equipment should not be left outside
to rot in the rain!"

ATTRIBUTED TO THE PRESIDENT.

Wed. 12. Sept.

Weather fine so hut had winter coat of
drying tar. - Child now has baby. Afterwards
for pleasant trip to G. B. Fungus & Plume
with Struan.

14th Sept.

I have borrowed hut K. J. S.

Returned 6th Oct.
P. T.

P. T. & K. B. departed to Silchester. Later 2 birds appeared
who were walking from Churchill to Cheddar but
lost their way & didn't seem to have a clue. Has seen
disappearing in mist (visibility c. 200 yds) towards
Tyrnys farm, living in fear of getting lost &
trampling over Blackdown for the rest of their
natural days. - Went home.

G. W.

Wed. Sept. 19

Visited hut. Both kitchen windows open.

Fri Sept. 21

Continued "living" of hut at W. end 8/11

2359 hrs

23.9.56 P.R.A. & J.H. arrived / camping behind
the 'child'. P.R.A.

24.9.56 Shooting at Butcombe - 1 pigeon + many
squirrels & tattered P.R.A.

25.9.56 - - - 1 hour. Barbecue in
evening with E.K.T. Mol, B. Crook, Joan & Dick Wood, J.H.
& P.R.A.

26.9.56 Fishing Blyden - nil return
much moisture - big fire on return sleeping
in hut. E.K.T. white washes kitchen floor
& spills same on roof too! P.R.A.

27.9.56 - Rain all day - odd jobs went to Bristol

28/9/56.

2 40' ladders & 1 belay rope
borrowed. - To & from Bristol on Sunday 30th
at Freshwater. P.R.A.

A.J.P.

31.9. P.R.A. fishing from 0600 to 1950 on Blyden
Results 4 trout $\frac{1}{2}$ lb - 2lb 2g - 2lb 8g - 2lb 12g
P.R.A.

29.9.56 - Tree felling with E.K.T. in wood
to plane in evening & then to E.K.T.
few Icelandic film reels taken by S.W.
S.A.W. - S.W. + J.P., J.H. + P.R.A. out for the
night. P.R.A.

30.9.56 E.K.T. D.P. S.W. & C.A.W. to
Priddy J.H. + P.R. left p.m. for London
after excellent holiday.

30.9.56.

Priddy party almost completed filling-in of
ex entrance excavation. Returned to hut to find DN+1
+ small Austin.

Found in hut levy box, presumably left by
departing pair was a piece of thin, rubbery material,
- could it be a cheque?

cdw.

6. Oct 56. Old & Dose to Working Hole (divers etc.)

Freshers down Rodds, Sickote, Goat Church, East Twin:-
J. Dickson, Bob Thomson, Bill Knight, David Mead, Rodney Johnson, J. Plaskett.
Frances Shabblo, Jennifer Doggett, Fiona Sewitt, Caroline McHally and 8
who left before giving her names.

~~A.J.H. P.H. & Caroline McHally to East Twin.~~ b.f.

7. Oct '56.

KB, PT, CI, FW walked to Checklat & back. For future
reference, The Butchers Arms is a good rehabilitating
centre esp for those who have lost interest in such
places, due to excessive intemperance. It also has a good
piano G.W.

Sunday. 7th Oct.

A.J.M. G.M.B. (Goal) & Mike Rhodes - (Fishes living in Holmes) to August Vale.

Stream was full but on entering Longwood shaft 100% H₂O was disappearing down back door.

However some down the crowd on surface diverted. The water down on top of the unfortunates.

Note. Water coming into the Great Rift in Longwood decreased after diversion -

Water passed over 10ft drop in Longwood entrance.

Little water was encountered under back door dig. or in the 30ft pit.

less in the tunnel but escape route was taking a tidy size of stream. This made the mining pit more interesting than usual.

G.M.B. would not pass the mining pit, others went on to the stream passage below.

On returning A.J.M. climbed the Longwood entrance shaft to re-divert the water.

On 8.3 this day the back door to August Vale while the water was diverted.
30 buckets (40% water)

A.J.M.

Mon. Oct. 8th 1956

Some members appear to belong to the
R.S.P.S.M. An adequate supply of fat was put out
for the ~~the~~ ~~the~~ ~~the~~

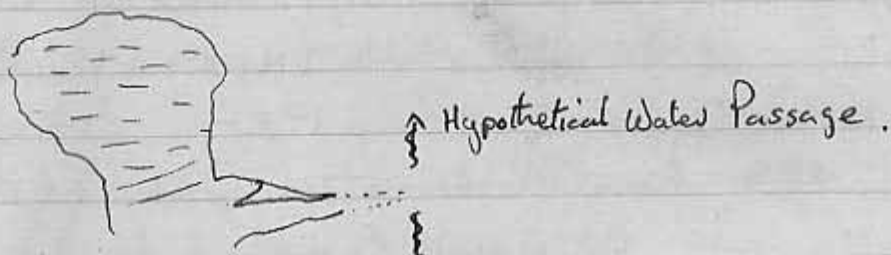
Sat. Oct. 13th 1956.

A vast squad descended upon G. B. (16 to start with)
PIM took first party down J. CH. A.K.S. C.M., F.H. and others unknown
BRC " Party number 2. with J.M., R.J., J.P., E.B., J.M. W.H.K., J.K. + 1.
Pim out by 6:00pm after rapid tow. BRC by 6:15 on the cables,
Conditions were a trifle overcrowded as some 25 Arkbridge types were also
milling around. Party visited the dig and came via the ox bar & the white way
down right cave by the Dog way. Nothing unusual happened the cave
was moderately dry and thanks to OCH, well lit. A later working party
were seen and DS & Friend. G.B. boasted ~~the~~ some 50 visitors!!
JCL & David Preston did some ~~the~~ BRC photography.

Sunday. Oct. 14 1956 Gough's Old Cave
digging in OP/11 in loose stones + earth
layer. Some small boxes + teeth of a large
deer ~~the~~

Saturday 13th Oct.

G.B.?
Gigs Templar, C.I. G.W., Goat, P.T. K.B. on working party. The rift to the right is being examined - it shows more possibilities for going straight on. Removed 40 buckets to lower the floor and had 2 bungs. It is now nearly big enough for a thin body to look at the cause of the noise. The way on appears to be at right angles to the rift parallel to the original direction. The pond at the end needs to be drained as it is soaking into the rift.



On the way out C.I., P.T. and Goat looked at the ooze, but decided, at intervals, that discretion prevailed.

K.B.

Sunday 14th Oct. C.I., K.B., P.T., P.H.T., O.C.L., R.M., G.W. to Manor Farm.

So depressing was the sight of the shaft that we spent the day digging a canal for the stream to bypass the swallet. Much old guttering was removed but lower end of the ditch is still higher than the stream. It appears obvious that a great deal of work must be done to the upper shaft before digging is recommenced in earnest.

G.W.

P.S. While K.B. investigated a crack in rock flake she was subjected to the thin end of a carbide flame on a prominent part of K.B. after some time she was heard to remark "It's gone right through" & ~~proceeded~~ carried on digging unconcernedly. Thus proving.....

14/10. cleaned out the chid, burning only material which could not conceivably be used on any part of the anatomy. Also did some woodwork & tidied up the tool-shed. D.P.

Wednesday Oct. 16th

Party at Gough's Old Cave. Digging black earth & stones layer in OP/11. A few bone fragments.

Started on Red earth & stones layer below in OP/11. A few remains of small animals. D.P.

Fri. Oct. 19th

Why do the women members almost invariably fail to close, let alone lock, up the caravan properly? Any sensible answer of a constructive nature welcomed. (They always live in hope!?) D.P. (Wishful thinking)

(N.B. The lower half of door will soon be off its hinges if not fastened & open windows let in the rain) D.P.

Sat. Oct 20th. R.M., K.B., M.B., G.V., B.R.C., P.M., A.S.M., C.I. went to Messer dinner at the Cave Man Restaurant. They were disgusted at the display of bread throwing etc, but joined in with gusto to prove their superiority. C.I.

Sunday 21st Oct. R.M., K.B., M.B., D.P., G.V., C.I. to G.B. dig. The dig was cleaned up, the construction below the spoil bank, & the bucket carrying wire rehung. The M.I.C.-G.B. did no work, but what else can one expect from a foreman - or should I say fore-woman. C.I.

21st Oct. Dase Stead. P.I.M. Mike Rhodes & A.J.M.

Planned trip to Swildons P.G.S. but on arrival to Mainer Bar the party gladly accepted an offer by B.E.C. to visit St Cuthberts Swallet.

The above 4 & 8 others accepted Wenner & B.E.C. were taken on an extensive tour of this superb cave. On the way negotiating 6 of the ladder pitches & seeing many of the fine formations.

After about 3 hours the "Dining Room" was reached, a quick trip along the stream passage to the Imp & back to the D.P. where hot tea awaited them. Time was then mainly spent so the most direct route to the surface was taken.

Many thanks to B.E.C. for the trip and enjoyable. — A.J.M.

~~21/10/56 The coconut matter in the list has been dispensed with on Presidential advice & Secretariat authority~~

~~S.W.~~

28/10/56 R.M, M.B, Gigs, G.H.B, T.R.S, G.W on flying visit to
 Manor Farm. Continued digging Eury. Now needs
 properly levelling and lining. - cold.
 G.W.

Saturday 3rd November, 1956

Large party to Souldon's Hole: Rita & Glennie, David Stead, Peter McLann,
 Tony Morris, Oliver Lloyd, The Goat, Bob Thomson, Jim Hawkins, Elizabeth
 Brockmusham, mainly for purpose of night seeing. We reached the
 swamp after two hours and looked at it, then retired to the P.G. stream
 and had chocolate. Then most of the party went out, while Tony, Oliver
 & Goat stayed and drilled a 10 inch hole in the P.G. stream. We gave
 them an hour's start & then came out, de. tracking in 45-50 minutes.
 O.Lloyd

Sunday 4 Nov 1956

Rehafted 1 Entrenching tool
 1 Sledge & short haft)

Wanted 1 full length sledge hammer handle

Monday 4 Nov

DHS + SES to Manor farm, levelled
 bottom of Eury's channel at 25'

104

27/10/56

Party of 5 to "Brean Down" digging.

Found number of bones in bone layer
& sundry block of peat from fowshone.

ASH

27/10/56.

Large Party to Eastwater. KB, CV, TRS, GW to Brean Series, and
c. 16 others who will doubtless write their own account. The former
party in by 1st & 2nd verticals and reached B.S. in a very short time.
This place is still as miserable & difficult as ever. Cf 'did the
usual' for K.B. when the latter finds herself in tight places. The
unanimous opinion of all was 'We are not coming back to this place
— until next time!' Thanks to Arson for writing at head of 2nd pit
5 hrs - grueling. E. With.

27/10/56. Eastern Tomie Party I down Dolphi route & up 14 pits
& double verticals: party consisted of DN, CAM, MB, RN, AR, Gigs, DP + several
floating members. Entangled with B.E.C. party on Dolphi pit.

R.M., G.F. $\frac{1}{2}$ Doc, MB & AR do 1 fold series instead of D.P. 122

14 pits

AR

28/10/56 Window replaced (see 6/9/56) & roof closed of lanes R.L.C.S.D.

The concrete masonry will remain in the hut (see 21/10/56)

See notice nr. fireplace!

Wednesday 7th Nov.

came to hut to find that the four-looked, festering, fake, foolish fellows who used the hut over the weekend.

- (a) did NOT fold blankets & put them on the one bunk.
- (b) Have EMPTIED CARBIDE LAMPS IN THE HUT!!
- (c) Left some clothes around interior of hut NOT in kit bags.

Do members ever read regulations?

~~C. A. Mason~~

(Hon. Sec)

Wed 11th Nov

G.W. C.I. K.B. sent down G.B. to take down some of the food and equipment for the camp (which we hope will take place at the weekend). The following items have been taken from the hut:

Two sawpans

1 Frying pan

9 Goat bowls

12 Mugs

14 Knives and Spoons

Two stair drills and lamp hammer

The Piton

large tin of Carbide.

K.B.

Sat. Nov. 10th 1956

Party of 5 to Brean Down.

Dug in bone layer + found several bones
horse, reindeer antler etc.

Arthur M. Appleson + 1 ~~antelope~~ ^{Antelope zoodogyste} bored small
deep holes in peat through peat into ^{Foot P, he'll} marine ^{keval be the}
clay to depth of 9' 4". Lovely glutinous clay ^{same again}

Hon Pres omits most important find, - made by G. Pothos Taylor 3/4 miles
out on foreshore, - two human femora (thigh bones to you) just
sticking out of the mud. (Savage observes "femine plural") - presumably
died with skirts on, - no trace of remainder of body, Coroner not informed M

Party of 5 unptem to camp in G. B. (but let them speak for
themselves) with Boris, Chris, & Chris Barber lending a hand with
the gear. The "Westminster" were in occupation, lead by
Dennis Kemp & brought from Town in two omnibusses (I
didn't know there were so many of them.) They kindly informed
me that the main chamber had been thoroughly ~~worked~~
up, so I left the plate camera on the surface. But the
effect of crowds in a cave is to produce a mixed atmosphere of
stale smoke, sweat, bad breath & paraffin.

Chris B. & I took two useful pictures in the Or-haw,
and then packed up.

Boris & I were the only ones sleeping in the tent, but we
were not undisturbed, as David Prater clumped in at about

Sat. 10th Nov. Arson R. to Wells Swimming Pool for first clip. still alive. S.R. 107.

2 a.m. (he said) to get a rawl-bolt. Just as we were nodding off to sleep again he clumped back. He wanted a larger star drill!

D. Lloyd

Sunday 11th November, 1956

M. PIMEL & ASM.

Visited Loxton with Trathy's, tracing & found the bone fissures. The two marked are on a continuous slope. Found a left humerus of Bo without head (ASM.) & took a photograph of it "in situ." The filling consists of brown, sandy, clay dry rubble with boulders. Might be worth digging. Looking for the head of this humerus I found a bit of oak rib as well. A.J.M. found a recent cat's skull at the foot of the terminal chimney. We were joined at the cave by John & David Skerritt and Ivor Surry (mechanics).

We went from there to the Arbridge Deluxe Hole.

D. Lloyd

Saturday - Sunday 10th - 11th November.

Camp in G.B. 1st party - Gigs, David Mead, C.I., K.B. arrived at 4.30, partly organised camp and started digging at 6. Had a bung which appeared to remove large quantities of floor, but not much else. 2nd party - G.W., P.T., D.P., Marcel and Tony B. arrived and complete organisation of the camp. Had supper at 10^{pm} ^{after which} when 2nd party washed and 1st tried to sleep. Unfortunately the sound effects of a series of major culaminities down below kept them awake. 1st the boss holding the wire on ~~the~~ one side broke. As soon as this was fixed up using a spare rawl bolt and tested, the other broke. D.P. left and went

to the hut to get another rawl bott. At two o'clock parties fed and changed over. Rawl bott arrived and was fixed at 2.30. Enough flour was removed to make drilling comfortable i.e. standing up position. A hole was drilled, but rock chose to split when it was nearing completion. Another was started for the next party. Changed over at 6.30, due to late start, fed, and work restarted at 7. About 8 M.B. R.M. and I.S. arrived; two barys were done and a few more inches of solid rock removed. Breakfast was eaten at 11 and due to ~~the~~ fatigue it was decided to pack up camp and go.

Although, apparently, not a large amount of progress was not made in the actual dig - a series of inevitable accidents or calamities were successfully dealt with and future dig should be unimpeded with this sort of trouble. Special mention must be made of the great work in sheparding of Boris who visited the camp 4 times - an enormous help and morale lifter, especially when leaving the cave.

Sunday 11th November. Afternoon.

K.B.

Small party returned from successful fungus foray to find the hut as well ordered as the Suez Canal; the bulk of the mishapen morons who had littered the place with septic heaps of paralent clothing, food, opened tins, dirty feeding implements et. al., had sloped off to pursue their devious perversions.

On their next visit to this establishment I shall be delighted to entertain the afore mentioned gentlemen to a succulent repast of selected mycological delicacies. The inevitable duty of clearing up afterwards I will gladly perform.

Ammanita Muscari.

(*Phalloides*?? - that's better!)

Borrowed from hut for weekend

- 1 120' nylon line
- 1 40' belay
- 2 shackles
- 1 ladder 40'

R.H.

Mon. Nov. 12

To G.B. to fit new locks. + repair wooden staging. Only outer lock could be fitted. A little filing will be necessary to widen "gate" for padlock hasp.

RH

Tue. Nov. 17 1956

Removed floating F.B. from washing water tank + disposed of same in a suitable place.

Left hut door unlatched for ~~both~~ both corners

RH

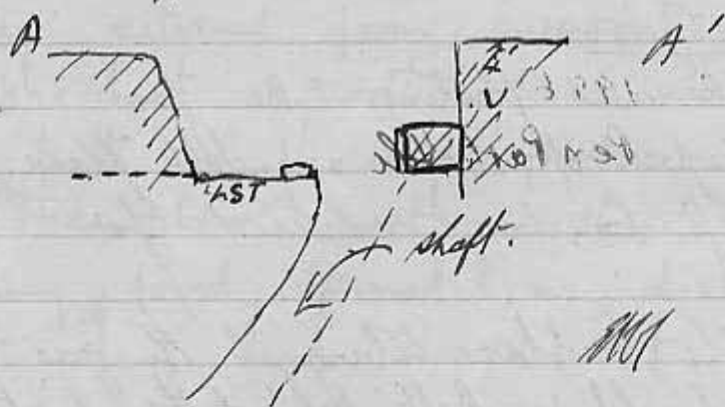
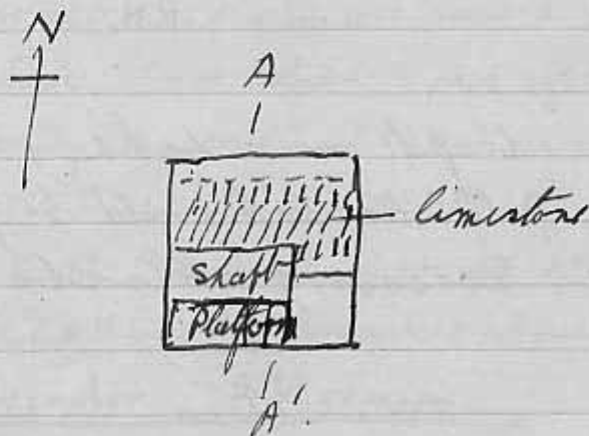
The rubber tubing to the gas ring under the oven should be kept behind the heat shield & under the concrete block. By this way it will not be melted when the back gas ring is alight.

Sat. Nov. 17 1956.

Pen Park Hole Party of 8 digging.

50 Buckets from shaft.

Umpton wheelbarrow loads from surface area
exposing limestone at depth about 5 ft.



N.B. Species hummer hit an all-time low
when BRC remarked of Trals hat was a "Tiffer-Trat".

Sat. Nov. 17th.

P.A.T., C.A.W., G.D.W., to explore the
deeper depths of Rod's Pot (undeterrred
by big black slugs). This cave is

definitely shrinking, as a certain anonymous (~~man~~) (♀) member found to her discomfort.

E.W.

Sunday Nov. 18th 1956.

Pete Cook & Oliver Lloyd carried out inspection of R.R.O. equipment at the Spelco Hut, the Belfry & at Hillgrove. Only the B.E.C. had theirs in good order. The secretaries will be written to. Pete has added to our collection here (a) some more bandages, (b) a number of triangular bandages (c) a little tin with dexedrin & glucose tablets. We need another hot water bottle.

5th

Sunday Nov. 18th 1956

Pen Park Hole Party of 5.

Dug 50 buckets from shaft. Continued exposure of limestone round lip of shaft. Limestone exposed on whole of N & E sides. Smooth flat surface is about 5 ft. clay above. At junction iron oxide layer dry & scaly about 1" thick & above dry sandy layer about 3" thick. The limestone surface was remarkably dry.

The section exposed showed that the miners had not cut back to limestone on N but had partly done so on E. & it is possible that they did so on west. AG1

Friday 23 Nov 1956

Dolebury Camp.

Visited camp to see about alleged digging for road material. No digging being done.

In S.W. corner so-called "Roman Camp" on O.S. map seems to be composed of pillow mounds & Medieval rabbit warren.

About half a dozen dark green grass rings observed about 30' diam & may possibly mark hut sites. Details in Field Work Log.

Sat. Nov. 24 1956

Elisabeth Hollis, G.W.B. & P.T. down
Goatchurch - short pleasure trip

P.T.

UCL, ASM, GW, P.L.Mel., David Steel & Carl down Swildon's.
Nier bang (3 sticks) in 11" hole in P.G. stream, 7 buckets full of debris.
Drilled another 5". Tony & Gary went to Mayday series and dug. Whole trip 4 hrs 10 mins. Stream very small. ocd.

Sat. 24th Nov. 1956.

GAS CYLINDER CHANGED.

Sunday. 25th Nov.

Purged the mess somewhat.

Sunday 25 Nov. 1956.

Replaced old gas cylinder. Still contains gas in fair quantity.

Sat. & Sun. Nov. 24 & 25 1956

Test boring at Priddy Circle No. 4.

Results inconclusive.

Details - Field Work Log.

Sun. Party went to Bream, found F.A.
(Not the F.A.?)

Tues Nov. 27 1956

Would the gentleman (!) who borrowed my hub key please return it to me. Had to effect entry through open tool shed door.

Sat. 1st Dec. R.M., D.M., D.N., G.M.B., B.R.C., G.W. to
Goatchurch. Most of the cave visited by most of
the party. - all good clean? seen. out quickly
for the Plume.

G.W.

Sat 1st Dec. P.S., C.I. out at 9 a.m. from hut to Pearly Mine.
Some time finding it. It was found by C.I. who stood on a broken
patch which promptly disappeared - with C.I., it might be mentioned -
down the shaft. He managed to stop himself at -30 ft and had
an interesting climb out with no lamp and ordinary shoes. After
that the top of the shaft was cleared of the rest of the loose broken
placed over it (isn't there law against silly bastards who lay
man-traps?) and the shaft descended properly by ladder. The famous
cave bowls were looked at and photographed & the mine surveyed.
However, while they were down some person or persons unknown
came to the top of the shaft and had a damn' good attempt at
filling it in again which made the final ascent rather tricky.

C.I.

SATURDAY DECEMBER 1ST

CAM. O.C.: P.M. A.J.M. to St Cuthberts (by kind permission
of B.E.C) A pleasant 8 $\frac{1}{4}$ hour trip was yet was very
enjoyable conditions, during which P.M. & A.J.M.
spent a long time taking photographs.
Much of the cave was seen but owing to the
enormous ramifications, there are still many subjects

which can still be tugged. Amongst other things, the Great Gouge & Cascade chambers were subjects of special interest.

Final point to complete a comfortable trip, the entrance pitch was dry. Party returned to hut at 12.30 AM. A.J.M.

Sun. Dec. 2nd 1956

3 - Boring holes at Priddy to circle. Possibility of a causeway entrance determined. 4 holes bored. Details - see Field Work Log.

Party of 3 down Longwood - found it full, in fact almost choked, with various caving bodies.

Party of 3 to Brean Down. Operating on bone bed. About time of departure a large fall of sand cliff from above bone bed occurred. A somewhat shaken party eventually recovered most of the tools. Chief find one large piece of rib, *Elephas Enigmaticus*.

Friday 7th Dec.

- (1) Changed gas cylinder.
- (2) Could the one of the party of 3 to Longwood last Sunday ~~has~~ who left the bit off the carbide, please return it in future. The result of loss

than a weeks festering produced a 2" layer of cartilage dust.

C.G.

Saturday 8th December, 1956

Chris Inman & Kathleen went to Leovy & Peary sites, Sandford Hill & completed their survey. Surveyed ~~top~~ of Leovy. C.G.

O.C. cut wood

Chris Butler arrived in the middle of the night.

Sunday 9th December

Chris & Trudy went to Loston & dug in the main bone fissure.

Two complete ribs of large mammal & several small bits of similar rib were found. Then the whole deposit began collapsing, so we left it. No sign of depression on surface, where it may have started.

No burrows on the hill above. We inspected the Langford Rising on the way home. Water very low.

Sumner, Chris Butler & Bob Savage went to Brown Down.

O.C.

Thursday, 27th Dec. 1956.

Arrived to collect the following for Primrose Pot.

1 x 20' ladder.

1 v sling

~~1 wire letter~~

1 x 60' nylon line

1 lamp hammer

1 star drill

1 cold chisel

2 small bags

Whilst sorting out the above & happened to tread
 on a stick of g — ~~to~~ in the tool shed. This is
 now residing in the medicine cupboard. Careless-
 ness on someone's behalf — ?

Departed into the fog & missed!

Thursday Dec. 20th 1956 — still same day as above entry
 only earlier. G.W.

Placed 5 lbs - 23 g — it in
 correct place - 25 copper tubes & wires attached
 also in same place. Did some wood work.

Fri Dec 21 D: B.A. Crook won a bottle of ~~500~~

Sat. Dec 22 1956 Gin in X-mas draw at Phoenix
 - home!

Did some woodcraft & washed
 out a few ~~the~~ drying cloths. 5000

Sat 29th Dec '56

K.S. & I arrived only to find that New Years Party had
 started yet! Went off disappointedly to Sandford Pery to continue
 with their survey. Were viciously attacked by a couple of bats in the said
 Pery while surveying ~ 600 ft of it.

Sunday 30th Dec '56. Only one more day to the party! K.S., C.I. back to
 Sandford Hill and did a surface survey between the mine (Pearly type) and the
~~big~~ big entrances. Result — Although the Pery is about 1000 ft long the distance
 (horizontal) between the 2 mines is only 600' (or thereabouts). However, the

2nd Crossroads in the levy are 600ft from the entrance ∴ if there is a connection between the Pearly Mine + Soudford Levy it occurs at the 2nd Crossroads, through which side cannot be said until the survey is drawn out.

C.9

31 Dec. 1956.

4.00 p.m. S.W., K.B., P.T., R.R., W.D., G.W., P.L.H., T.R.S., B.R.C., ~~W.C.I.~~ at hut + SOBER.

6.00 - Ditto + M.B. and still SOBER.

6.14. - R.M. arrives. Contents of whiskey bottle disappear. Company not quite so sober.

6.22. ^{C.I., K.B.} ~~Hot~~ of party disappear to Boozer.
W.D. with shovel - iceaxe - trowel. GORILLAS

HOGMANY 1956

Those present to Dinner included The President, Prof. Palmer, Frank Frost, Oliver Lloyd, Trevor Shaw, Chris Ineson, Mick Balister, Garry Witts, Brian Collingridge, Pete McLaren, Struan Robertson, Kathy Bamfield, Anelvic Rosenfeldt, Pat Tanguer, Sheila Watters, Rosemary Miles, Mally + Bertie.

This was indeed a memorable party, only one member suffered any discomfort, of him more later. After dinner itself certain facts sprang to mind. Oliver dealt with the bird with a mastery befitting his profession. At the other end of the table Fr. Robertson was also performing, dressed in full ceremonial rig. — Hat & beard & all that goes with it.
The menu was as follows:-

Mushroom & Noodle Soup.

Turkey and stuffing.

Creamed Potatoes.

Sprouts

Christ mas Pudding.

Rum butter.

Brandy Sauce

Dessert.

Sherry (mainly S. Africa.)

Moulin a vent 1949 (Burgundy.)

The lessons of the previous year having been well learnt, the Plume did limited trade with members of the society and they were as a result all able to appreciate the meal. The President alone had bloodshot eyes, not because of earlier excesses, he claimed. "Believe who may."

The dinner started at 9.0 pm to the banging of crackers, and was greatly enjoyed by all (this year) - The President keeps a watery eye on the proceedings. Molly & Boby joined us at the end of the meat dish.

After dinner, the party, having lost Molly & Frank Frost, centred round the fire - to imbibe gin, sherry, ^{rum} Burgundy & shock. Various songs were sung & played. By popular request the unfortunate tale of the Butcher Boy was not among these. The Vice-Presidents having been well to the fore so far, led the party outside to celebrate the arrival of the New Year. Our guests from the farm May & Gerald Hbbat had now arrived & joined us in toasting the Old Year out & singing the New Year in along with rockets & other inflammable illuminants. Sheila was heard to express her appreciation of the bangers* in no uncertain terms.

* Not bangers but bangers-BANGERS*!!*

At this stage of the proceedings no one felt under the weather though two couples had stayed out to keep an eye on it. At 1.0 am there was a general exodus of those not intending to stay the night, prior to the washing up. A general haze now fell upon the proceedings. Certain facts are prominent. Dates & nuts circulated freely, as did the varied drinks. A state of happy semi-sobriety fell upon the scene, which was marred only by the return of Mick & Nurse, the former having found the weather outside quite sickening.

Nurse "Got to bed, go to bed, you look quite awful."

For the last two hours till 3.0 am the conversation was desultory to say the least. Various photographs were taken, unfortunately flash bulbs ran out but great hopes are held of that photo taken with the last bulb. At some point during this stage the washing up was done, a monumental task performed by Stuart & Sheila with "able" assistance from Trevor & Rosemary and some unstable assistance from Mick. Sleep eventually overcame all other DESIRES. and the ^{members} ~~last~~ finally ceased all active pursuits at 4.30 am. A memorable & enjoyable party. B.H.C.

Jan 1. 1957.

At 8.10 am. (N.B.) Certain members K.B. C.I. R.M. C.M.S. arose to catch buses. Cantat noise & commotion drowned the groans of those less happy mortals whose heads were splitting. Tea ^{& Sausages} were only eventually served at 9.30, an intoleral state of affairs for those still in bed. But A.V. & B.C. had by now got a bottle of glory so all were contented.

a.w made several colored time around the bar a number of

NEW YEAR'S PARTY. 1956-57.



ABLESSING FROM FR. FROST.



HAPPY OBLIVION.



PLYING THE TOOLS OF HIS TRADE. "BUT MY DEAR, I JUST COULDN'T REMEMBER A THING!"



G.W. made several enforced trips around the hut & surrounds, until eventually at 11:0 ish B.C. & G.W. arose after a long feeble order to observe further, the sunrise which up till now had been hidden aside by sleeping bags. The ladies rose later still. - A.R. in the throes of some unknown delusion demanding for breakfast ^{the} cold pork which was left over from last night.?! (Needless to say there was no pork last night.) B.R.C.

ROOM FOR PHOTOS!!

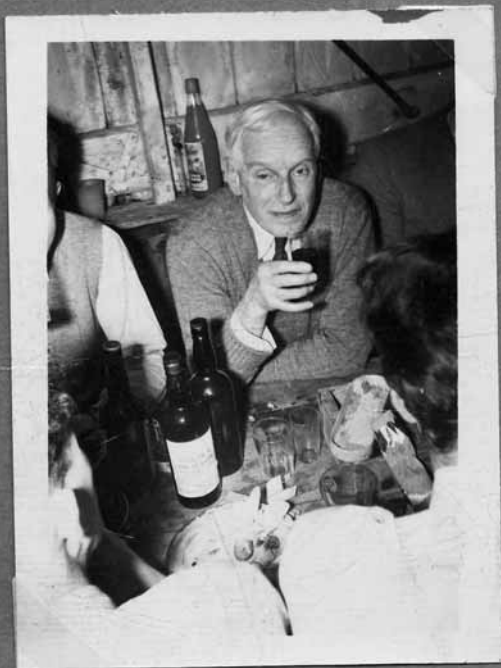
see green house opposite.

Quotes: G. Witts with surprise & pride. "I have not vomited once this weekend" B.R.C.

NEW YEAR'S PARTY. 1956-57. 67a



ABLESSING FROM FR. FROST.



HAPPY OBLIVION.



PLYING THE TOOLS OF HIS TRADE. "BUT MY DEAR, I JUST COULDN'T REMEMBER A THING!"



incorrect - I'm glad
to report C.I.

RE. entry Nov. 7th by C.I. subheading (a) is apparently no longer in force. The ~~heap~~ of blankets he left on his pit was perhaps in the best secretarial tradition, but he obviously disregarded his own entry, ^{was} not perhaps wise thing to do.

Quote "Do members never read regulations."

answer. "NO"

Jan. 3rd 1957. " --- and the kitchen windows were open"

Borg's New Year Resolution 365

Sat. Jan 12th

E.K.T., P.N., O.C.L., G.W., cutting wood.

a fair amount accumulated of for the Manor Farm showing, illumination and performance by kind permission of E.K.T. who obviously needs lessons from S.R.

Notice re painting - OK

G.W.

Sat. Jan 19th 1957. O.C.L. repainted or replaced 4 of the 6 Burnington Cove MRO notices.

The other two (Rod's lot & goat church) have been stolen during the past week.

Sun Jan 20th (left in a hurry).

C.I. K.B. down AB to change lock on inner trapdoor and fix a rawlbolt (to increase the length of the wire backwards). A newly resheathed lump hammer broke - he didn't, for once, when the hole was the right length.

January 19th - Party of 4 PT, RM, TRS, MB on Shank's pony
 to August the entrance plat was dry, but rather large
 quantities of water were heard & encountered. Further
 down the spring pit was negotiated with a ladder skillfully
 placed so that the climber was accompanied by a waterfall all the
 way down. Party proceeded to oxbow - the dry oxbow passage
 was followed for some distance and looked quite interesting,
 although it became rather choked for further progress. Party then
 went out of cave as quickly as was possible to
 counteract the effects of the water. Some biospeleology
 was carried out by PT & TRS who removed a cave
 bug and brought it out preserved in a bottle.

Not a miserable trip, but very enjoyable in retrospect. It
 would have been more so if we had returned to find a
 fire lit at the hut. Khumbak!

R.M.

Saturday Jun 19th

Party of 5 to Readi's to look for N.R.O. notice assuming that it
 might have been taken down the cave. C.I. climbed down the pot to
 see if it was there and C.A.W. O.M. D.N. proceeded down to the end of the
 cave for the same reason. When the party re met four of them
 tried to see how fast they could haul a body (Albert, volunteering)
 out of the pot. Left the cave without further incident. C.A.W. O.M. and
 D.N. proceeded to Readi's and haven't been heard of since.

K.B.

15. A blessed quiet descended on the hut when the mob departed for the
 Wessese supper + a supply of W.S. B12.

124

Jan 19th DM, DN & CAW, after leaving K~~500~~I took a look at Read's. The trip started well; a bird taking off in a hurry from a bush overhead gave a first class imitation of a cliff face tumbling through the trees & sent the intrepid explorers diving for cover. They then went down the cave to look for Z alley. Went down hole marked Z, et ergo, did not get to Z alley. This hole leads to a small stal-coated grotto with a 4" hole at far end



a = one boat
b = one & a half boat

This is the hole at which André stuck a year ago.* No one could get even hips through but a block on L has been moved & a little crowbar work would open a way - if it's worth it.

Got back & to our great surprise; supper was cooked! Cor! Bat SPS 193 was seen in this pass.
* Sounds like it - but some people have Chd.
GAS CYLINDER CHANGED. b - Big boots - AR

Jan 20th

T.R.S., D.P., G.W., P.T. cleared out the hut and more than somewhat purged the mess.

P.S. gave floor bleobatus beauty treatment.

P.T.

Jan 20

Dave Stead, guest RJG & CAW on pleasure trip to G.B. 2 hrs.

CAW.

WILL THE VANDAL* WHO PINCHED MY LAMP
AND REFLECTOR FROM MY HELMET
WHILST "TIDYING" THE HUT PLEASE
REPLACE IT.

K.B.

* Nival. JB

Saturday 26th January 1957

Peter Seabrook and Shier Lloyd down Goatchurch, to look for the missing
M.R.O notices. They were not there. However, this time we had
a spanner with us, and so were able to untolt & dismember the
remaining wooden notice at the far end of the drainpipe & remove it.
On being fragmented later at the hut, it was found to make excellent
kindling wood.

S.L.

G.B.

W.

W.

W.

W.

P.M. BCC & CA_W took apart the G.B. Goat to the Dig
with Mike Aslett & Jim Hawking. Dig flooded so wandered.
Adelia Halliwell, Jennifer Dogget, Hazel, CAM
AKS & CA_W + P.M. Towed the cave and found a potential passage needs
a Maypole. BCC, Tony Banks, Sheila Tucker, Barbara Flavey,
& R. Kay ditto. Cave wet with straw all over place - Dig flooded.
Entrance had stream in it. Enjoyable trip by all - we may
ever see some of them again.

24th Jan. Sunday (- but only just). At 0100 hrs a party consisting of P.S. (a B.S.A. visitor), T.R.S., R.S.M., G.W., K.D.M.B., C.I. descended bravely out of the dank of Songwood farm into the dank of Songwood Swallet. The original intention was to do a complete August Hole. T.R.S., G.W., C.I., got as far as into the caverns below the Water Chamber and sadly (?) decided to turn back due to the slight inconvenience of ~~the~~ the way on being, to say the best, flooded. The party retired in great spirits to Songwood cave itself and treated the showerbath above the letterbox with the contempt it deserved - screams and incantations. The party descended to the "end" of the cave i.e. of the streamway, but the combination of B.S.A. superiority and Yorkshire dolkiness drove P.S. on to try and get through to August Hole. He, it might be noted, did not succeed, but established the first bit of evidence on the superiority of B.S.A. waterproofs over U.B.S.S. as he was still dry after 5 minutes flat out in the stream. The second piece of evidence came above the main chamber when he tried to diminish the oven with the waterfall in it - under, it need hardly be said, the waterfall. After 10 mins of this he was still dry. The third piece of evidence was a piece of showmanship. P.S. stood helpfully under the above mentioned showerbath, to the gasps of "Cor" from the audience. Fun was had by K.B. in the W-bend when (a) her light went out (b) the carbide tin she was carrying fell, open, into the water. Perhaps a lucky combination of events. P.S., of course, waded in this water. Home left at 4.0 a.m.

K.B. Back at the hut P.S. showed disappointment on discovering that his inner layers were "slightly damp"!

Could the members please not block up the drain with tree leaves, potato peeling, etc. etc. It causes such inconvenience.

Saturday 2nd February, 1957.

Swildon's Annual Spring Cleaning Scavenging Trip. This was very well supported by the U.B.S.S., of whom Chris Leman, Kate, Trevor Shaw, Pat Tangey, Chris Lloyd, Peter & Chris Taylor, Brian Ollingridge, Malcolm Watts, Roy Roy, Mick Aslett, Jill Kenyon and the goat went and did some cleaning, while Jerry Witter & Tony Morrison went through Sump I to the oblong series to continue (? conclude) their dig. The total number on the party was 34, the remainder being made up of Wesssex, M.N.R.C. Sidcot, ~~on~~ Brecon Cliff and Merced types.

The side streamway was cleaned to Sump II, also Trout's Temple to Balch's Grotto, & the side of the road part of Upper Swildons. The two Taylors are now both "true sons of Mendip."
O. Lloyd

Sunday 3rd February.

One up and one (archaeological) trowel taken for me at Blazey P.T.

Sat. 2nd Feb.

3 to G.B. for geology. Toured cave & came to some interesting conclusions.

C. M. B.

Sunday, 3rd February, 1957

Tour round Mendips to point at old members from W.R.S. notices
 a gain "intelligence" from the Hunters' Lodge. Notices as treated!
 Whitson's Easter Holes, Cuckoo Caves, Tankard & Hunters' Holes, Lamb Leer,
 Eastwater & Swildon's Holes. B.E.C. members ~~was~~ were asked to do
 St. Cathbert's themselves. New notice created at Grottohouse.

"Intelligence": a. The diving trip at Worsley did not take place
 last night, because as a result of the recent rains the water was milky.
 b. The B.E.C. party did descend the main pitch of Pen Park Hole on
 Saturday 19th ^{January} ~~February~~ January. O.T.L.

Sunday 3rd Feb. 1957.

The President, Mr J.C. Coleman, W.R.S. T.R.S. C.I. to Cheddar to see
 the private parts of Gough's New Cave. Our Irish friend and visitor
 was shown various muddy chambers, and was heard to swear
 in crawling between them.

C.O.L.

Sat - Feb. 9 1957

Is this a record?

On Tuesday last	Two windows caravan open
	One door " "
	Toddled door open
	Hat door open

All these had been open since Sunday evening.

M.P.

Saturday 9th Feb.

Photography trip to Lamb's Lee. O.C. A.J.M.
G.W. & P.T. (Peter Taylor). - About 5
photographs were taken. Soon after the
photographer had started the proceedings there
arrived a main party from Burnington to
enjoy the scenery. (Unfortunately marred by an
excess of smoke from about $\frac{1}{4}$ lb "flashless
smoke powder")

Party consisted of K.B.R.M. T.R.S. P.T. D.N. P.M.
Tony Smeaton, Michael Rhodes, Tony Byrne David
Mead. Geoff Goal Band. Ray Roy. & — Barbara
Harvey. All of whom descended the
pitch in fairly rapid succession & enjoyed
a trip to the "Chamber of Falling Waters"

Fortunately for the Society there was no
accident as certain of the members had not
signed a blood dit - this having been left
in Bristol. — by the Secretary!!

Photographs taken included - 3 of Main Pild
2 of Beehive chamber.
+ 2 others in the hut.
A.J.M.

Will members never unpack their (and the society's) and replace it in the correct place? No prizes are offered for the correct solution.

Are these last remarks the wanderings of a deluded mind - or just a witicism!!

15th Feb.

PMC, Cdw, TS, RR, Janet? & ?.. to GB to show the newcomers the joys of caving. Crazy, pleasant trip. Cdw, TS & RR went out the Wet Way, very pleasant & not too wet, but wet enough for enjoyment. Down 3½ hrs. Cdw.

16 Feb

RM, TRS and MB, on trip down GB. Worked for 1 hour in the East passage. Actual progress at the working face was about 1.6". Air became rather foul but didn't extinguish candle, probable cause was RM; who was wearing a festering coat from 'child'. Total time down cave 2 hrs.

Tools removed from East Passage for cleaning. 1 pick
1 shovel.
1 entrenching tool.

23rd Feb

MB & RM to Pearly Mine and Sandford Levery. The path leading to same is 100% liquid mud which makes progress difficult. The surround of the entrance shaft looks rather unstable due to excessive rain. Both explored although coal plants were not discovered.

R.M.

23rd Feb.

Operation Maypole I. Zero hr. 1600 hrs.

Schedule. Zero - 5 o.c.l., P.M., R.R., A.S.M., P.M.T., G.W.
assembled at entrance to Longwood Ssallet
with 16' maypole.

While this was going on, o.c.l.
fixed the repaired M.R.O. Zero hr. P.M., R.R., A.S.M. down shaft.
noticed on a new thin flat Zero + 5. Maypole I abandoned.

just inside a new triangular
stone wall, which the Brothers Zero + 10. G.W. B.R.C. down shaft to look.
Stade built round the Zero + 15. o.c.l., to twilight zone and back.

at. Zero + 25. maypole installed in Fred Young's
battery house to await further use.

G.W. Witts.

"I don't mind the rocks. It's all the water"

G.J.M. re. Longwood Shaft

23rd Feb.

A shower of, consisting of 9 drops, from Leicester University College
(of whom it has been said "Who?") arrived. Quotes "My string
nest has a hole in it" "Did you really have a box in here"
"I must have my hot-water bottle".

They then changed and were taken to C.B. by C.I. Also a caving
party of K.B. and her Brenda / friend joined them lower in the cave. Nearly
all came seen, except Doye. Attempt to come out the wet way was frustrated
for 1/2 party in following way. Five people, including C.I., were up and
the last one - not C.I. - dropped an open carbide tin into the
Devil's Elbow - and then lit it. There was a bloody great explosion

~~182~~ Regret unavoidable absence - with you in spirit.
(Flames) Arson R.

and the message was so filled with fines as to be impensable for the rest. It was very remarkable that no technical etymological terms were heard. So fine went up west way - when some of the above-mentioned terms were heard - and the rest were taken out the dry way by K.B.

C.I.

Ref. 26th Feb 1956. A.M.A. line 9. IT IS!

Amongst the flock of lesser Spotted Footed Oiler which visited us were a Frigate-tail (a rare bird in these parts - although one was noted a few years ago) and at least one Cockardoodle-Oiler; the last named being in full spring plumage. A few other unidentified species were seen and what was probably a genuine Oiler was seen as the last of the flock were flying away. Native birds were heard to emit their war cries and warning songs when the Frigate-tail invaded their nest, but it was "like water off a duck's back"!

Wed 27th Feb.

When K.B., P.L.S., C.I. were walking across the compound towards the hut they noticed the tracks of a cloven footed animal on the ground. On ~~the~~ inspection they corresponded in size and shape with those of a large goat. cf

P.L.S. sets out traps on barrow ^{T178C} (S) on Black Down helped by K.B., E.K.T., C.I.

Sat 2nd March.

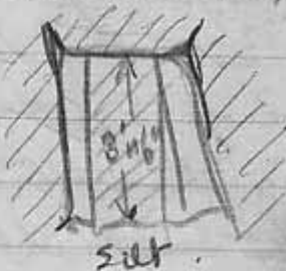
EKT., D.A.S.R., P.T., P.L.S. to T 178c. Survey measurements completed, and first quadrant opened. The ground is fairly soft & progress should be fairly rapid, ^{weather permitting}. One old fire-watcher made the observation that it looked like a bomb crater — let's hope he is wrong! P.L.S.

GAS CYLINDER CHANGED TO A HALF USED ONE.

Sat 2nd March

B.R.L. + 4 R.N.V.R. down A.B. for about 2 3/4 hrs. Very pleasant trip. Stream fairly high, Bottom Dried & sand holding back only small stream, rest disappearing down sand dig.

View along
Stake Passage



the roof was recently monitored by floodwater

B.R.L.

GAS CYLINDER CHANGED TO NEW ONE.

Sat. 2nd March, 1957

Tony Morris, Garry Withers & Blair Lloyd to Black Hole in Swinton's. 6 1/2 hour trip. 7 bags to start with, but we were helped by Spud Murphy as far as the 40. Everything seemed to go well. No trouble with sunbaking luggage. Spare clothes all time dry; changed at 10' overhang. Then

we put a ladder down the black hole (see round-hole and $1\frac{1}{2}$ ft. V string, and a 40' ladder is only 2' too long) and each in turn first had a look at the traverse & then went to the bottom. Much to our surprise the Black Hole Traverse is dead easy. It is only 2' across & easy to straddle, nice hand holds & shoulder holds & plenty of rock to push on. The Black Hole itself is a fine great rift & quite photogenic. The upper end of the Paddy Green Stream camp is in a narrow boulder neck. It should not be too difficult to clear, when the time comes. Luke's tube is still there. Then we went across to Thunderbolt Depot and had bread & honey & cheese. Then a visit to the Well Chamber (pretty waterfall, pretty curtains). The stream passage above the Well Chamber contains some very interesting shaltered stalactite & stalagmite columns. We reach Dove Knees Creep, which was as far as we meant to go & then returned. Everything went well until we met the ~~Sand~~ Sandhurst shower at the bottom of the 40. Their idea was to hang their ladder on top of ours. It is the first time I've seen two ladders dangling from that patch. Almost at the same time we met Peter McLaren's large party, and after threading our way between innumerable scouts, everything again went well. Really our bags were very heavy. J.H.

Sat 2nd March R.H., K.B., T.R.S., C.I. to Songwood. Although it is no doubt considered "soft" by other members we laddered the 10' drops and found that it is much more pleasant that way. Four lengths of maypole were carried down and, much to our surprise, this was dead easy. Firstly the water chamber in August was looked at. The water, which used to flow from the roof, now comes in through a passage which, under dry conditions, might be passable. Second, the waterfall above Songwood Main Chamber was looked at but the Maypole - as expected, - proved to be 8' to short. C.I. then looked at Hensley's Passage but this closed up above the lovely curtains. The 3½ hr. trip was very pleasant indeed.

et

Sun 3rd March.

Large party - E.K.T., T.R.S., R.H., C.I.(!), K.B., S.R., P.L.S. dig at T 178C. Helped most efficiently by Mrs Mrs MacLennan 2 quadrats + a section of a third were opened, and revealed a level assemblage of large rocks, giving no evidence for or against it being man made. One section when excavated to a depth of one foot yielded light brown(!) undisturbed soil. There is a possibility of a post-hole near the centre - but this is only a possibility. The weather was fine & the spirit good although the work was somewhat unrewarding(!) Work was carried out for about 4 hrs, and it seems likely that ~~it~~ will soon finish here & we can all push on to a more hopeful site.

A.S.S.

9.3.57. EASTWATER CAVERN A.M.P. D.P.T., O.C.L., G.W. to take photos. 1st in head of Canyon. 2nd at 1st Vertical - illumination by kind permission of Don Thompson - rot him! after this a tharast tourist trih tollpots in heavy fog. Various attempts were made at further photography but yet another dose of the dreaded powder soon made the cave uninhabitable and we left hurriedly for quick drink at H.L!

'N.B.' Could we have the other $\frac{2}{3}$ of the 1st Pitch laddered: also next time please?

Garry was 20 today - G.W. Note he is buying a road at Churchill next week. - full attendance would be appreciated - !!

10.3.57. Don Thomson and Garry Witts to Read's photog-
-raphising Main Chamber. G. notes was not observed.
G.W.

A MAGNIFICENT ERECTION HAS BEEN MADE,
MAINLY THE WORK OF E.K.T., COMPRISING OF THE
NEW GRIND AND VICE, AND DULY INSTALLED
IN THE TOOL SHED!

WASHING UP IS A CHORE COMMON TO EVERY HOUSEHOLD IN THE CIVILISED WORLD. WHY, THEN, CAN'T THE FESTERING BASTARDS WHO USE THIS HUT BECOME A LITTLE MORE CIVILISED!

IT HAS ALSO BEEN NOTICED THAT AT THE SIGHT OF WASHING UP, PEOPLE TEND TO "SKYVE" OFF TO VIEW "THE ROCK OF AGES" !!!
P.S.

10.3.57. J.T., A.J.N. & P.T. down G.B.. A.T.N.
Took photos at the bridge & 40'.
Pleasant ~~2-hr.~~ 2-hr. trip.

P.T.

SOME MEMBERS FAIL TO REALISE THAT IN ORDER TO KEEP THE HUT FIRE BURNING, IT IS NECESSARY TO CUT FIREWOOD, OTHERWISE KNOWN AS "WOODMANSHIP." IT MAY FREQUENTLY BE OBSERVED THAT THESE MEMBERS ARE THE FIRST TO COMPLAIN IF THERE IS NO FIRE, OR WOOD WITH WHICH TO LIGHT IT.

Signed ?? with the greatest of pleasure.
P.S.

~~Scarcely it is the usual thing to sign one's name after an entry in the log. The person who wrote this must be really scared of being called a hypocrite not to sign his name.~~
Sunday, 10th March
(Cancelled with apologies by P.T. who mistook the handwriting.)
C.F.

Party of 6 - KBARR, CI, DM, PH to Swickons. The grating is off the entrance to the cave now. There was quite a lot of water down the cave, and one would have thought from the abundance of

Both that a Guinness brewery had been set up in the cave! Party proceeded via the usual obstacles to Trabs Temple. The thinner members went through to St Pauls and two went on to view the mud sump. There is plenty of baking apparatus there - no air space was visible in the sump. The latter members refused to attempt the squeeze giving as a pretext that they didn't like mud, nor did they want to get wet in the pool. It has been found that liquid glucose tastes quite pleasant even though the liquid is due to muddy water. An extremely enjoyable trip was had by all, particularly the sight of blue sky when emerging from the cave. The pleasant after effects of ~~the~~ trip were spoilt only by the insinuations of the quite uncalled-for comments in the log - I thought we had stopped trying to get at each other.

R.M.

13th Mar. 57. K.B., G.I. to Gouthurk.!

E.K.T., D.M.M.T & P.L.S. to top of Blackdown, one quadrant completely cleared to undisturbed sub. soil. Possible evidence of burning in second quadrant. Weather extremely cold.

P.L.S.

[pp. 139-191 are blank]

30/5/56	Primus stove parts		4	6	
	Gas mantles		15	-	
	1 cyl. Gas		4	-	
12/6/56	1 Bag cement		7	-	
	2 cut sand		3	-	
July	To Hon. Treas for Hut Replacement fund		2	-	
12/8/56	4 gall Paraffin		8	4	
	1 cyl gas		1	4	
24/8/56	1 " "		1	4	
	Replacement pressure valve		15	-	
29/9	4 galls paraffin	8-4-10	8	8	
30/9/56	To Hon. Treas for hut fund		1	-	
16/10/56	1 cyl gas		1	4	
	6 large mantles		7	6	
10/12/56	1 Vice		2	2	
	1 cyl gas (up 4/-)		1	8	
	4 galls paraffin (up 2 ^d gall)		9	2	
15/2/57	1 Bench type grinder	9-3-3	2	13	
27/2/57	1 Tube Bostik		3	6	
7/3/57	12 Mantles No. 3 Large 4 jets		1	7	6
	6 " No. 2 Medium		2	16	-
	2 cyls gas				
	Balance due to R.M.	2-10-2			

30/5/56	Cash		10	-	
9/6/56	"		4	-	
12/6/56	"		12	-	
1/7/56	"		2	10	-
8/8/56	"		2	-	-
24/8/56	"	7-4-10	4	10	
21/9/56	"		1	-	-
29/9/56	"		8	8	P.A.A.
30/9/56	"		1	-	-
16/10/56	Cash		1	11	6
2/12/56	Cash		2	7	-
20/1/57	Cash		2	-	-
23/1/57	Cash	8-8-6	1	10	-
27/2/57	Cash		3	6	
"	Cash		10	-	
10/3/57	Cash		1	8	0.

1955

Hut Levy
Payments

		£	8	8	
Oct. 25	Balance due on hut extensions to 8/11	8	17	6	8/11
" 28	Cement & asbestos piping		14	4	8/11
Nov. 17	Paid to Hon. Treas for Hut Replacement Fund	2	-	-	8/11
" 18	1 Cylinder of gas	1	4	-	8/11
Dec 9	4 galls paraffin		8	4	} 8/11
" 9	Deficit on carbide can <u>2-10-0</u> <u>2-0-0</u>		10	-	
" 18	Gas mantles & nipple jets		12	3	} 8/11
" 28	Sundry pipe fittings		7	4	
" 30	Gas, tubing, Gas ring & jets	2	3	8	
Dec 6	1 Window bolt		2	1	} 8/11
25/1/56	1 Mop		1	6	
	1 cyl. gas	1	4	-	} 8/11
8/2/56	1 sheet galv. iron		12	-	
11-2-56	1 Quix		1	3	} 8/11
22/2/56	Gas : 1 cyl	1	4	-	
	Gas fittings		4	9	} 8/11
10/3/56	1 Hall rack	1	19	6	
3/4/56	G. Fuller - generator blade.	3	-	-	8/11
10/4/56	2 cyl. Gas	2	8	-	8/11
12/4/56	Hosing & clips for water pipe		19	5	8/11
4/5/56	Plastic water tubing		7	6	8/11
11/5/56	Pipe fittings		3	9	8/11
28/10/56	Gas Cylinder	1	4	-	8/11

J. J. J.

Hunt Levy Receipts

			F	D	O	
28/10/55	Cash recd. by EMT					
31/10/55	" "		2	14	4	
1/11/55	Balance in hand by EMT		1	-	-	
19/11/55	Cash recd		2	6	6	
10/12/55	" "			17	6	
	" "		2	-	-	
20/12/55	" "	per Hon. Treas for hut extension	1	13	0	
	" "		4	-	-	
30/12/55	" "		1	5	-	
7/1/56	Cash "			7	-	
8/1/56	" "		1	10	-	
25/1/56	" "		2	4	8	
8/2/56	" "			12	-	
18/2/56	" "	To close own account - balance to Hon Treasurer.	2	0	0	HM
22/2/56	" "		1	8	9	
10/3/56	" "		1	19	6	
3/4/56	" "		2	4	-	
12/4/56	" "			14	-	
22/4/56	" "		2	-	-	
28/4/56	" "			15	-	
14/5/56	" "			13	-	EK
	" "		1	1	3	
25/5/56	" "		1	4	-	
5/6/56	" "		1	4	-	

d + r



Mr. G. M. Bond.

9 Clinton Rd,

Barnstable

N. Devon

(GOAT)