

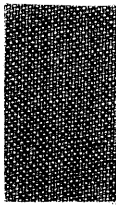
Moore's Modern Methods, Ltd., London, E.C.4



K 10

Ham Green Kiln Site

ST 536760



Moore's Modern Methods Ltd., London, E.C.4



To repeat order state Feinnt, Size 5" x 8"

UNIVERSITY OF BRISTOL SPELAEOLOGICAL SOCIETY MUSEUM CATALOGUE

✓
K 10.5
No. 1

NEGATIVES			PHOTOGRAPHS	LANTERN SLIDES	
35mm	Up to 1/4 pl.	1/2 and 1/1 pl.		2 x 2in.	3 1/4 x 3 1/4 in.

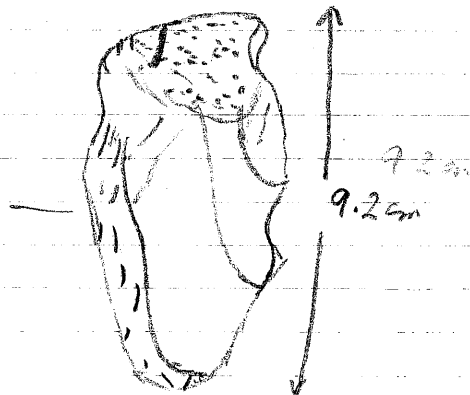
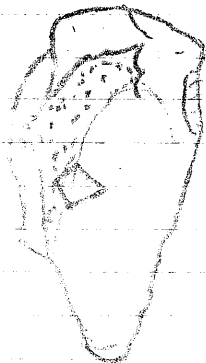
LOCATION

ST 536 760 on rise from

REFERENCES Roe, D. 1974 Palaeolithic Artefacts from the
K10.5/1-8 all from same site.
under case 10

50' Terrace 6/6/71
River Avon Terraces. Proc. 13(3)
stored. Lower drawer

1 Hand size Green sand Chert



UNIVERSITY OF BRISTOL SPELAEOLOGICAL SOCIETY
MUSEUM CATALOGUE

No. K 10.5
2

NEGATIVES			PHOTOGRAPHS	LANTERN SLIDES	
35mm	Up to 1/4 pl.	1/2 and 1/1 pl.		2 x 2in.	3 1/4 x 3 1/4 in.

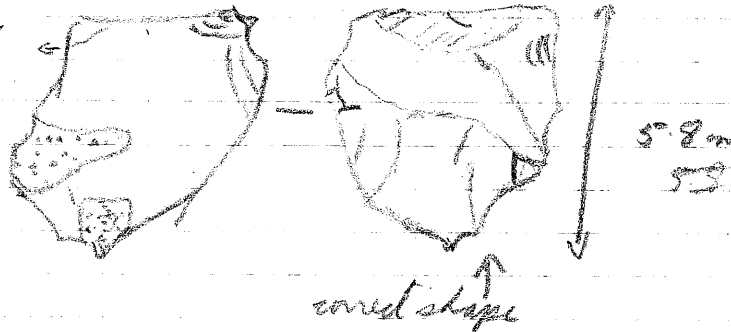
LOCATION *ST 536 760*

3/6/71

REFERENCES

stored. Lower drawer under case 10

*2 Heart shaped flake tool
worked one face only
well rolled.*



UNIVERSITY OF BRISTOL SPELAEOLOGICAL SOCIETY
MUSEUM CATALOGUE

No. K 10.5
3

NEGATIVES			PHOTOGRAPHS	LANTERN SLIDES	
35mm	Up to $\frac{1}{4}$ pl.	$\frac{1}{2}$ and 1/1 pl.		2 x 2in.	$3\frac{1}{4}$ x $3\frac{1}{4}$ in.

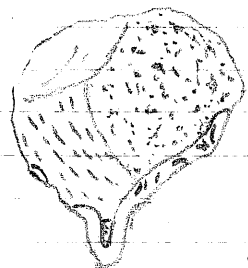
LOCATION *ST 536 760*

3/6/71

REFERENCES

stored. Lower drawer under case 10

3 chert bover trimmed?



3.4cm



UNIVERSITY OF BRISTOL SPELAEOLOGICAL SOCIETY
MUSEUM CATALOGUE

No. K10.5
4, 5, 6, 7, 8

NEGATIVES			PHOTOGRAPHS	LANTERN SLIDES	
35mm	Up to $\frac{1}{4}$ pl.	$\frac{1}{2}$ and 1/1 pl.		2 x 2in.	$3\frac{1}{2}$ x $3\frac{1}{4}$ in.

LOCATION *ST 536 760*

3/6/71

REFERENCES

Stored. Lower drawer under case 10

4 scrap of chert
5 } scrap of flint
6 }
7 }
8 }





UNIVERSITY OF BRISTOL SPELAEOLOGICAL SOCIETY
MUSEUM CATALOGUE

No. *K 10.7**G*

NEGATIVES			PHOTOGRAPHS	LANTERN SLIDES	
35mm	Up to $\frac{1}{4}$ pl.	$\frac{1}{2}$ and 1/1 pl.		2 x 2in.	$3\frac{1}{4}$ x $3\frac{1}{2}$ in.

LOCATION: *Field centred at ST 535759*

REFERENCES

Surface finds scattered, mainly in the eastern half of the field. This contains much of the "Ham Green" type ware with an appreciable quantity of later material



To repeat order state. Feint, Size, 5" x 8"

UNIVERSITY OF BRISTOL SPELAEOLOGICAL SOCIETY MUSEUM CATALOGUE

 No. K10-7
A1 - 411

NEGATIVES			PHOTOGRAPHS	LANTERN SLIDES	
35mm	Up to $\frac{1}{4}$ pl.	$\frac{1}{2}$ and 1/1 pl.		2 x 2in.	$3\frac{1}{4}$ x $3\frac{1}{2}$ in.

LOCATION

ST 535 759

REFERENCES

These are samples taken in various 1m squares in the eastern part of the field. They were found to have little significance in terms of distribution of pottery about the field due to their small size and the effects of ploughing.

To repeat order state **Feint**, Size, 5' x 8'

UNIVERSITY OF BRISTOL SPELAEOLOGICAL SOCIETY MUSEUM CATALOGUE

No. K10-7A 13

NEGATIVES			PHOTOGRAPHS	LANTERN SLIDES	
35mm	Up to $\frac{1}{4}$ pl.	$\frac{1}{2}$ and 1/1 pl.		2 x 2in.	$3\frac{1}{4}$ x $3\frac{1}{4}$ in.

LOCATION ST 5356 7587

REFERENCES

Surface finds. This area about 15 m across was stiff with sherds almost entirely with "Ham Green" type ware. These were picked in a non-selective way. Amongst these pieces are some kiln-wasters.



UNIVERSITY OF BRISTOL SPELAEOLOGICAL SOCIETY MUSEUM CATALOGUE

 No. K10.7
A14

NEGATIVES			PHOTOGRAPHS	LANTERN SLIDES	
35mm	Up to $\frac{1}{4}$ pl.	$\frac{1}{2}$ and T/I pl.		2 x 2in.	$3\frac{1}{2}$ x $3\frac{1}{2}$ in.

LOCATION . ST 5329 7542
 REFERENCES

A scatter of pottery, particularly of the red unglazed ware, was found in the area of the grid reference, with a couple of minor concentrations in the north end of the same field.