

Moore's Modern Methods, Ltd., London, E.C.4



L4

LULSGATE — BROADFIELD DOWN

L4

Broadfield Down - Lulsgate

This is a plateau area at about 600ft O.D. It has on it many prehistoric monuments. LONG BARROWS. Fairly Toot, Butcombe, Waterstone Dolmen, Redhill long barrow, Felton Common long barrow and twin round barrows. There are other sites known from surface finds as Neolithic/Bronze Age. The present sites are east of Lulsgate airport and east of A38 road. The finds were made by searching ploughed fields. Field 1 Neolithic and perhaps Bronze Age, Field 2 Mesolithic.

Field 1 ST ~~57~~ 514653 Field 2 ST 512649 Both references are to the approximate centres of the fields.

Moore's Modern Methods Ltd., London



To repeat order state Feint, Size 5" x 8"

UNIVERSITY OF BRISTOL SPELAEOLOGICAL SOCIETY
MUSEUM CATALOGUE

No. L 4.9
1, 2,

NEGATIVES			PHOTOGRAPHS	LANTERN SLIDES	
35mm	Up to 1/4 pl.	1/2 and 1/1 pl.		2 x 2in.	3 1/4 x 3 1/4 in.

LOCATION *Surface, ploughed field.*
REFERENCES

- 1 *Sundries from field 21*
2 " " " 2

Moore's Modern Methods Ltd., London, E.C.4



To repeat order state **Feint**, Size: 5" x 8"

UNIVERSITY OF BRISTOL SPELAEOLOGICAL SOCIETY
MUSEUM CATALOGUE

No. L 4.5
1-3

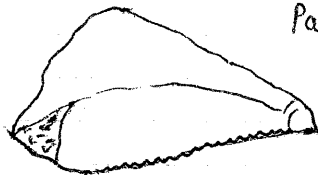
NEGATIVES			PHOTOGRAPHS	LANTERN SLIDES	
35mm	Up to 1/4 pl.	1/2 and 1/1 pl.		2 x 2in.	3 1/4 x 3 1/2 in.

LOCATION *Surface - ploughed land*

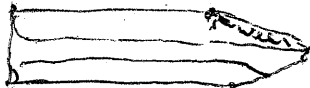
REFERENCES

[1-8 are from field 2]

- 1 Small blade. ligns use 1 edge. Patina - white. Prob. Mesolithic
- 2 Small blade with steep retouch on back at pointed end. Prob. Meso.
Patina. white



1 //



2 //



3 //

- 3 micro-burin? Prob. mesolithic Patina white

UNIVERSITY OF BRISTOL SPELAEOLOGICAL SOCIETY
MUSEUM CATALOGUE

No. L45
4-6

NEGATIVES			PHOTOGRAPHS	LANTERN SLIDES	
35mm	Up to 1/4 pl.	1/2 and 1/1 pl.		2 x 2in.	3 1/4 x 3 1/2 in.

LOCATION *surface - ploughed land.*

REFERENCES

[Field 2]

4 *Micro lithic blade? Patina white. Prob. mesolithic*

5

"

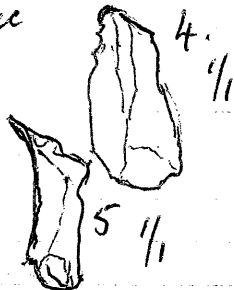
"

"

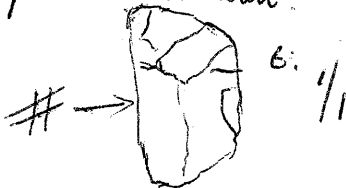
"

"

"



6 *Part of a round scraper. Patina white.*





To repeat order state Feint, Size, 5" x 8"

UNIVERSITY OF BRISTOL SPELAEOLOGICAL SOCIETY
MUSEUM CATALOGUE

No. L 45
7, 8

NEGATIVES			PHOTOGRAPHS	LANTERN SLIDES	
35mm	Up to $\frac{1}{4}$ pl.	$\frac{1}{2}$ and 1/1 pl.		2 x 2in.	$3\frac{1}{4}$ x $3\frac{1}{2}$ in.

LOCATION *surface - ploughed land*

REFERENCES

[Field 2]

7. Part of a blade # white patina



8 Sundry pieces with white patina

UNIVERSITY OF BRISTOL SPELAEOLOGICAL SOCIETY
MUSEUM CATALOGUE

No. L 4.5
8a-16

NEGATIVES			PHOTOGRAPHS	LANTERN SLIDES	
35mm	Up to $\frac{1}{4}$ pl.	$\frac{1}{2}$ and 1/1 pl.		2 x 2in.	$3\frac{1}{4}$ x 3 $\frac{1}{2}$ in.

LOCATION *surface - ploughed field Field 1*

REFERENCES *8a - ~~16~~ 15 probably all ~~be~~ belong to
2nd Neolithic - Bronze Age on typology and patination*

On patination a few pieces under L4.5/16 may belong to the probable mesolithic horizon.

8a - ~~16~~ ¹⁵ are all from field 2. 1



To repeat order state Feint, Size, 5" x 8"

UNIVERSITY OF BRISTOL SPELAEOLOGICAL SOCIETY
MUSEUM CATALOGUE

No. L 415
8a-10

NEGATIVES			PHOTOGRAPHS	LANTERN SLIDES	
35mm	Up to 1/4 pl.	1/2 and 1/1 pl.		2 x 2in.	3 1/4 x 3 1/2 in.

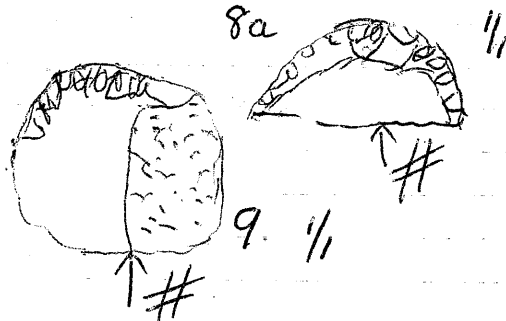
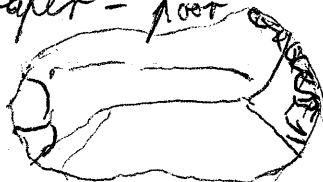
LOCATION *Surface - ploughed field 1*
REFERENCES

8a Round scraper - part of

9 End scraper - part of. some cortex remains

10 Steep end scraper - poor quality

||





To repeat order state Feint, Size, 5" x 8"

UNIVERSITY OF BRISTOL SPELAEOLOGICAL SOCIETY
MUSEUM CATALOGUE

No.

L45

11, 12

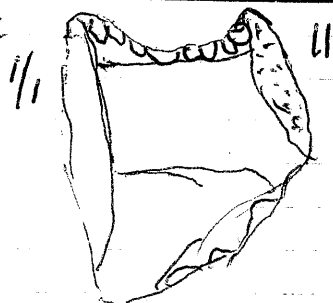
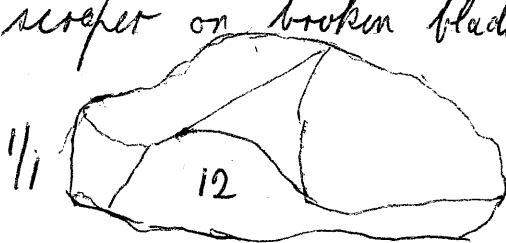
NEGATIVES			PHOTOGRAPHS	LANTERN SLIDES	
35mm	Up to $\frac{1}{4}$ pl.	$\frac{1}{2}$ and 1/1 pl.		2 x 2in.	$3\frac{1}{4}$ x $3\frac{1}{4}$ in.

LOCATION

REFERENCES

Surface, ploughed field. 1

- 11 Notched or shaft scraper or broken blade
12 Rough blade?



UNIVERSITY OF BRISTOL SPELAEOLOGICAL SOCIETY
MUSEUM CATALOGUE

No. L 4.5
13-15

NEGATIVES			PHOTOGRAPHS	LANTERN SLIDES	
35mm	Up to 1/4 pl.	1/2 and 1/1 pl.		2 x 2in.	3 1/4 x 3 1/2 in.

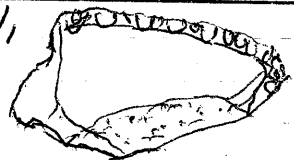
LOCATION REFERENCES *Surface. Ploughed field 1*

13 *Retouched blade - part of*

14 *leaf shaped arrow head. Neolithic form. Much fine secondary working*

15 *core*

13 //



14. //



UNIVERSITY OF BRISTOL SPELAEOLOGICAL SOCIETY
MUSEUM CATALOGUE

No. L 4.5
16, 17

NEGATIVES			PHOTOGRAPHS	LANTERN SLIDES	
35mm	Up to $\frac{1}{4}$ pl.	$\frac{1}{2}$ and $1/1$ pl.		2 x 2in.	$3\frac{1}{4}$ x $3\frac{1}{4}$ in.

LOCATION *surface, ploughed field*
REFERENCES

- 16 *sundry pieces of flint from field ~~no~~ 2*
17 *" " " " " field 1.*

Moore's Modern Methods Ltd., London, E.C.4



To repeat order state Feint, Size: 5" x 8"

UNIVERSITY OF BRISTOL SPELAEOLOGICAL SOCIETY
MUSEUM CATALOGUE

No. L45
18, 19

NEGATIVES			PHOTOGRAPHS	LANTERN SLIDES	
35mm	Up to $\frac{1}{4}$ pl.	$\frac{1}{2}$ and 1/1 pl.		2 x 2in.	$3\frac{1}{4}$ x $3\frac{1}{4}$ in.

LOCATION Field 2

REFERENCES

- 18 Mesolithic ~~rejuven~~ type rejuvenation flake
"plunged"
- 19 Mesolithic type core
(Identified by Mrs Anne Everton)

