

Archæological Notes

A Bronze Emblem from Portishead, Somerset. The bronze (*Fig. 10*) is a surface find made at the St. Mary's Lane, Portishead, site (Brown, 1965).

It is a cast socketed disk. The decorative head was filed smooth, and both file marks and the centre point for scribing the true circle can be seen. The interstices of the design appear to have been cut clean by cold chiselling. The head is 44 mm. in

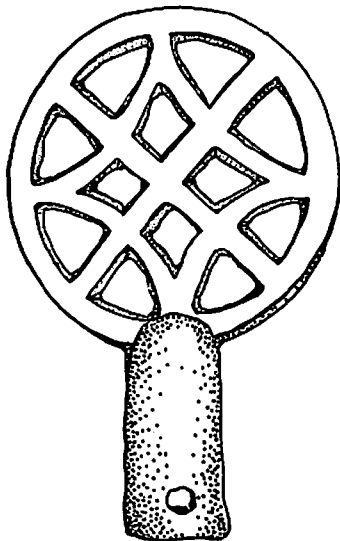


Fig. 10.

diameter and 4 mm. thick. The internal diameter of the socket is 10 mm. There are two pairs of holes through the socket, each pair being at the same level. The second pair was drilled, presumably, because the socket split. As they are drilled right through at the same level they probably were intended to take a through pin, rather than nails or rivets. The object appears to be meant for a staff or wand.

I am much obliged to Mr. G. C. Boon for his wide ranging efforts to identify it. It does not appear to be Roman but no medieval parallel has been found.

J. CLEVEDON BROWN.

A Roman Applied Brooch from Charterhouse-on-Mendip. (N.G.R. ST 504563.) The subject of this note was picked up from the surface of a field at Charterhouse-on-Mendip by Mr. Christopher Hawkes, who kindly presented it to the Society's museum after having shown it at the National Museum of Wales. The brooch consists of a rectangular bronze plate, 3.9 cm. by 1.9 cm., with traces of a hinged pin-fastening behind. The face is slightly recessed for the seating of a thin repoussé leaf of bronze. The design has almost disappeared, but a beaded border is evident here and there, and, within, what may be the back paws of an animal. These details recall a slightly smaller Camerton brooch (Wedlake, 1958, *Fig. 55*, No. 54A) dated to the middle of the 3rd century A.D., showing a prancing dog to left within a beaded border of the same kind. The dog's body is elongated and is reminiscent of the animals found on Castor ware.