

Note on a Socketed Celt found at Chipping Sodbury, Gloucestershire.

BY J. A. DAVIES, B.Sc.

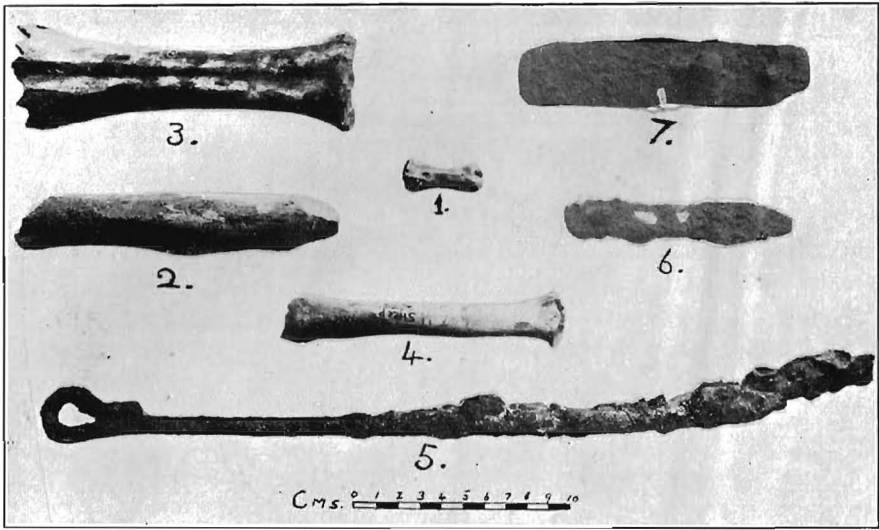
Five years ago, after blasting operations had been carried out in the quarry belonging to Messrs. John Arnold and Sons, at Chipping Sodbury, a bronze axe was discovered by a workman. The specimen was obtained by Mr. M. Dowding of Chipping Sodbury, to whom I am indebted for permission to examine and describe it.

The axe is small, being but 5.5 cms. in length, and 3.5 cms. in width, along the edge. The weight is 93 grams, and the density 7.9 grams per c.c. The patina is lustrous, dense and dark green.

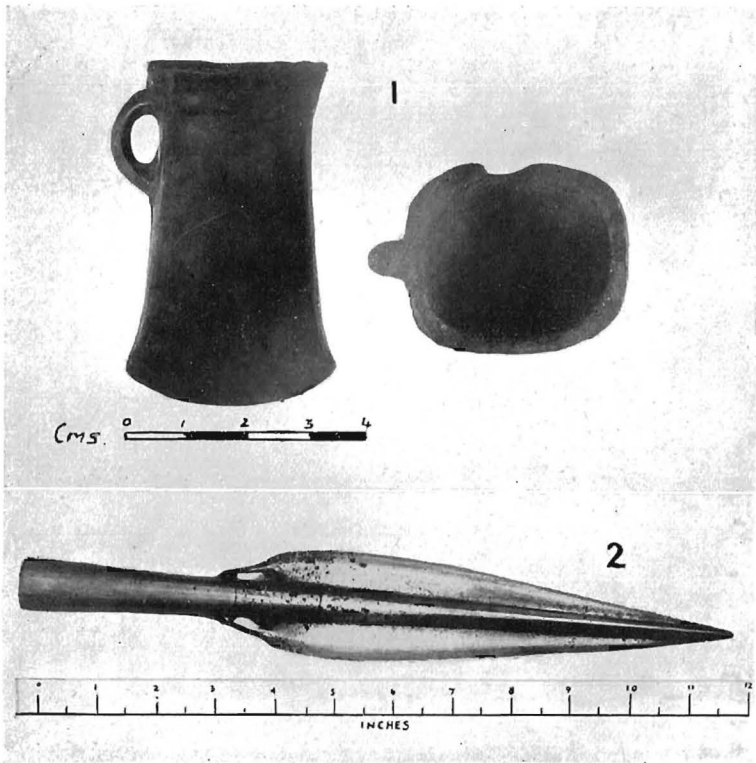
In section the socket is rectangular with rounded corners, one wall being broken, and a fragment of metal lost; apparently at a very remote date. As may be discerned in the figure (Plate IX, B, No. 1) the loop is relatively large. There is no trace of vestigial wings upon the specimen, which is devoid of ornament. The ridge where the two halves of the mould came together is surprisingly high, and little attempt was made to reduce it by filing; however, the axe was sharpened and ready for use.

According to the finder's story there were no other associated implements, but it is manifest that if the celt was part of a small hoard other specimens might have been lost in the explosion.

Axes of this type appear to have been in use at the end of the Bronze Age.



A



B

PLATE IX.