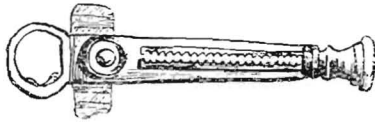
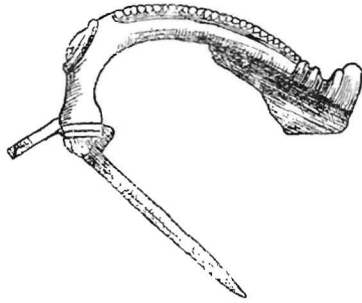


## Note on a Roman Brooch from Timsbury, Somerset

BY B. A. CROOK, M.B., CH.B.

The brooch was found at Timsbury in 1931 by workmen during the process of digging drains. The level at which it was found is unknown and there were no correlated finds.



S. R. A.

Roman Fibula—Timsbury.

The brooch made of bronze is harp shaped, being Late Roman, and a direct descendant of the La Tène III type. The solid loop and moulded bar replace wire bindings; the moulding on the bow also points to a late date, being confined to the outer surface.